

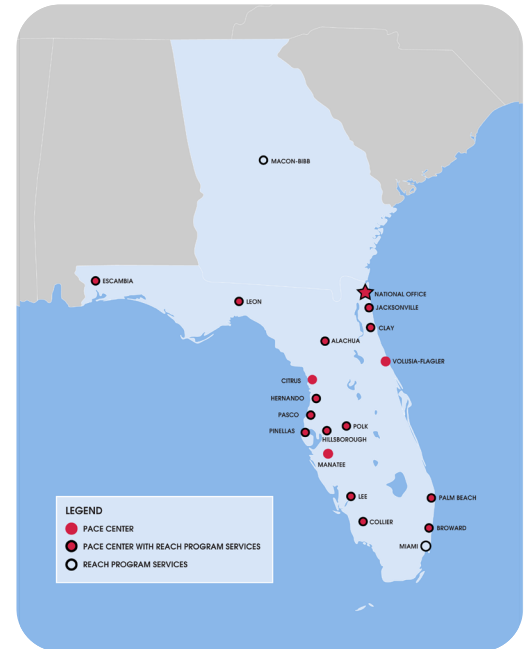
FAST FACTS 2026

Pace envisions a world where all girls and young women are safe, have economic security and an opportunity to use their voice in shaping their future.

Pace Center for Girls provides a safe and supportive environment for girls to build healthy relationships, plan for their future and overcome histories of trauma. All girls, regardless of their background, deserve an opportunity to become strong, compassionate and successful women. When properly supported, all girls have the power to achieve their vision of success, which leads to positive outcomes for themselves, their families and communities.

KEY METRICS 2025

3,049 GIRLS SERVED **14** AVERAGE AGE **41%** MIDDLE SCHOOL **59%** HIGH SCHOOL



IN HER WORDS

MILEIGH



When I came to Pace, I was very lost. I was not attending school, dealing with a lot of anxiety, and not picking the best people to be around.

Pace helped me get on the right path in life. Without it, I don't know where I would be. Now I'm enrolled in the Early Childhood Education program at Marchman Technical College, where I received the Academic Achievement Award, and I'm working full-time at a private preschool academy. I've become more of a leader and mentor. And now, even though things get hard, or I sometimes feel like I want to give up, I remember how far I've come and just imagine what life is going to be like in a couple of years. I KNOW I'm going to make it."



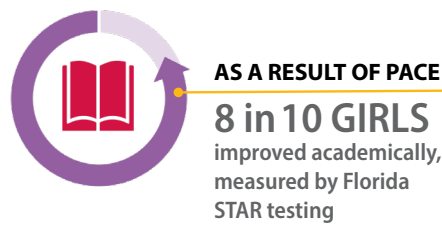


Day Program

Pace’s Day Program provides year-round academics, counseling, life skills, and career preparation for middle and high school girls, with individualized plans tailored to each girl’s strengths, experiences, and needs.

100 Girls Served FY2025

ACADEMICS



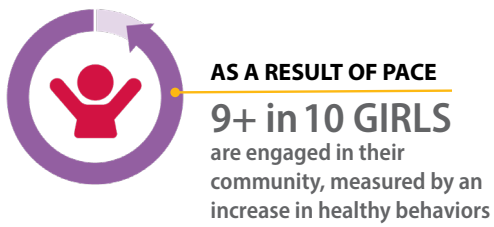
*Before Pace, 6 in 10 girls were failing school
six months prior to attending Pace.*

PERSONAL GROWTH



*Before Pace, 7 in 10 girls demonstrated
behaviors related to juvenile delinquency.*

COMMUNITY ENGAGEMENT



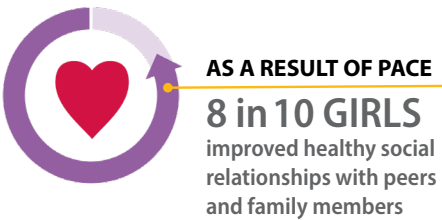
*Before Pace, 7 in 10 girls were disengaged
in school and community life.*

Reach Program

The Pace Reach Program offers social, emotional, and behavioral health support for girls ages 11-17 and their families. Reach therapists provide these therapy services at community locations, such as partnering schools, homes, and at Pace Centers.

21 Girls Served FY2025

SOCIAL RELATIONSHIPS



*Before Pace, 4 in 10 girls were feeling sad or hopeless,
including thoughts of self-harm.*

COMMUNITY ENGAGEMENT



*Before Pace, 6 in 10 girls were disengaged
in school and community life.*

* Numbers represented here are for Pace overall, as the number of girls completing the program does not allow for data comparison.

FROM OUR COMMUNITY

“We partner with local organizations who support youth health & wellness, and college & career development, and Pace Pasco’s mission closely aligns with the mission of our company. Pace provides young women in our community with resources and support to achieve their potential, and EM is thrilled to be a business partner to enhance their mission now and in the future!”

-Heather Rosacia, Community Partner, Enterprise Mobility

