

Creating COMMUNITY

SHARED REFLECTIONS, SHARED FUTURES



2024 IMPACT REPORT

ON THE COVER

Watch our cover story below

On the cover, Jada Holmes, academic manager, is featured alongside Precious, a student from Pace Orange. You can watch Jada's full, inspiring story in the video below. Precious, 15, has a deep love for art and uses it as a form of expression when words don't come easily.



At Pace, we create a safe space for girls to explore themselves, their talent and help them believe in their potential. The students who walk through our doors on day one are not the students who walk out after they complete the program. And, I believe I can say the same for our staff. Sometimes, we must believe enough in the girls until they can believe in themselves."



LETTER FROM THE President & CEO

Dear Friends and Supporters,

Our values and mission haven't changed since our doors opened almost four decades ago when our founder, Vicki Burke, a dedicated social worker, identified and sought to rectify the disparities faced by girls within the juvenile justice system. Vicki saw a need to create services designed specifically for girls. A place where girls could feel safe, loved and empowered to turn their lives around.

The true measure of Pace's success lies in the countless success stories of the over 40,000 girls we've served since opening our doors in 1985, growing from serving 10 girls in Jacksonville, Florida to serving over 3,000 girls annually across Florida, Georgia, and South Carolina.

While our North Star of a world where all girls and young women are safe, have economic security and an opportunity to use their voice in shaping their future remains the same, as we look ahead to our 40th anniversary, how we pursue our mission is constantly evolving based on the needs of our girls, team members, partners and communities.

In just five years, we have navigated a global pandemic, multiple natural disasters, addressed a youth mental health crisis that deeply affected our nations' girls, and faced a national teacher shortage. Through these challenges, we have successfully refined our program model to ensure we continue to meet the unique needs of the girls, families, and communities we serve.

This year, in response to the critical need for accessible mental health services, we launched TelePace, a virtual therapeutic platform designed to provide mental health services to girls and their families that would not otherwise have access to Pace. In partnership with the Delores Barr Weaver Policy Center, we are also conducting a comprehensive review of the state of girls and young women in Florida—a vital step toward understanding and addressing the multifaceted challenges girls face today. To address the teacher



shortage, in collaboration with Miami Dade College, we are training educators on Pace's trauma-responsive teaching practices, making it easier for our teachers to become credentialed, and have established a direct pipeline from MDC's School of Education to teaching positions at Pace.

By staying ahead of emerging challenges, we can ensure that we reach the girls, families and communities who need us most, and that we can effectively meet their unique circumstances.

None of the successes we have seen this year would have been possible without your support. As we set our sights on the next decade of our work, I want to thank individuals like you, who believe in our mission and share our vision for a brighter future for all girls. Your continued support is deeply meaningful, and we are truly grateful for your commitment to Pace.

Mary Marx, President & CEO of Pace Center for Girls



BUILDING FOR THE FUTURE

The Impact of Investing in Girls' Education and Well-being

Author: Maryam Ghyabi-White



Lately, I find myself reflecting on the story of a young woman named Lisa*, a college student from Volusia County who endured a challenging childhood. The tragic loss of her younger brother caused her to struggle academically, leading to missed school days, and she spiraled into depression and anxiety. Her family faced financial hardship, and Lisa took on a part-time job at Sonic to help make ends meet. It was through Pace Center for Girls that Lisa was able to complete her high school education and begin to reclaim her future.

Hearing about Lisa's journey—her challenges, perseverance, and triumphs—deeply touched me. Like so many girls, she faced unseen obstacles that threatened to derail her future. Her ambition to pursue higher education was held back by financial constraints, particularly her inability to afford housing while attending college. Her experience is a poignant reminder of the silent struggles faced by young girls—struggles that all too often go unnoticed.

Lisa's journey is different from mine, but we share a common desire for education and economic empowerment as first-generation college students.

I grew up in a small village in Iran, where most women accepted limited roles. My mother, however, was a powerful force in my life, encouraging me to envision a different future. She taught me that I didn't have to marry young and could pursue a job and higher education. This led me to leave Iran and study civil engineering at University of Central Florida, determined to succeed with my English dictionary in hand.

Throughout my career, I've dedicated myself to bridging the gap between government and community, championing projects that are both sustainable and beneficial to society. One of the most important lessons I've learned is that women's economic empowerment involves much more than financial resources. It requires access to education, shelter, and opportunities that allow

women to take full control of their lives.

I believe in the power of investing in women's potential. That's why organizations like Pace are so critical—not only for the girls they serve but for the broader future they are helping to shape.

At Pace, I discovered that the girls they support are resilient, strong, and determined to overcome the challenges they face. Whether it's the aftermath of devastating hurricanes or the growing youth mental health crisis, these girls continue to rise above. Yet, their needs are evolving, and so too must our efforts to ensure they have the tools, support, and opportunities to realize their full potential.

As for Lisa, the bright young woman who has faced so much adversity, she continues to find ways to heal and thrive. Today, she is actively engaged in her community and pursuing a degree at Daytona State College. Her dream is to become a teacher so that she can give back to the very community that supported her.

It is stories like Lisa's that remind us why investing in girls' education and well-being is so crucial. Together, we have the power to ensure that every girl like Lisa knows she has the unwavering support of her community behind her as she builds a brighter future.

**Pseudonym used to protect the privacy of the girl and her family's experiences.*

2023 MILESTONE MOMENT

August 2023:

With the Annie E. Casey Foundation's support, Pace hosts the inaugural Girls Leadership Institute bringing together girls from 21 Pace locations across the state of Florida to address challenges and create innovative solutions to shape the future of Pace.



Angel - Pace Alachua



Alyssa - Pace Broward



Jade - Pace Citrus



VOICES OF IMPACT



Former Senator Anitere Flores, a member of Pace’s Board of Trustees and Nijah, 24, a Pace alumna and current student at State College of Florida, share their experiences, lessons, and ambitions.

Can you share a personal experience where you felt empowered to take charge of a situation or make a difference?



One experience that stands out for me was when I spearheaded the initiative to expand scholarships for first-generation college students. As a first generation American myself, I understood the challenges of those who dream of higher education, yet also have fears about the financial burdens this education can place on their families.

– Former Florida State Senator Anitere Flores



Alexis - Pace Clay



Gaby - Pace Collier



Miyesha - Pace Escambia



Jana - Pace Georgia

[CLICK HERE to read the full feature.](#)

In what ways do you think women can support and uplift each other most effectively?

“ As the first woman in my family to attend college, I faced challenges, including learning disabilities and a fear of failure. It took me five years to return to school, but I’m now thriving in my psychology studies, excited to learn about mental health. I realized that my previous experiences had unknowingly prepared me for this path. – Nijah



ALUMNAE PATHWAY

We are thrilled to highlight Bella, a graduate of Pace Center for Girls, Lee, who plans to pursue a career in welding at Fort Myers Technical College. According to the American Welding Society,

there are expected to be over 400,000 job openings nationally in the welding industry by 2025. Currently, women constitute only 5% of the workforce.





Mia - Pace Hernando



Derriannah - Pace Hillsborough



Jossmaire - Pace Jacksonville



Ryleigh - Pace Lee



Rebekah
Pace Miami

“

Pace helped me to gain the confidence I needed to achieve my potential. They were the first place that I was ever told that I was capable, confident and intelligent. Because there were adults who believed in me and told me so, I started to believe in myself. Before then, I had never had that kind of positive interaction in my life. The staff took the time to make a difference.” - Sage, Pace Alumna

2023 MILESTONE MOMENTS

October 2023:

Pace celebrates the grand opening of the new Pace Clay center.



ALUMNAE PATHWAY

We're proud to share that Da'Zauria will be the first person in her family to attend college. By pursuing an IT degree at Tallahassee Community College, she's not just chasing her dreams, but also breaking down barriers and inspiring future generations of young women to pursue careers in STEM.



DESTINY'S STORY

Pace Alum and Criminal Justice Graduate Inspired to Give Back to Students Like Her

As a former Pace girl who faced significant adversity, Destiny now stands as a teacher, a devoted mother, and a recent graduate from Polk State College with a Bachelor of Science in Criminal Justice.

"It means absolutely everything to be graduating from college because my whole life I thought this was a path that was unattainable to me," Destiny shared. "I spent most of my life thinking that I wasn't smart enough to go to school, let alone graduate from college. I've not only proven others wrong, but I've shown myself what I can do, and I have shown my daughters that they can do anything too."

Destiny's story began in Marion County's Lowell Correction Center in 1992, where she was born. Her childhood was marked by instability, with both parents frequently in and out of prison. As a young woman Destiny described herself as "being allowed to do whatever I wanted," raised in a household where her parents didn't provide direction or guidance. The lack of structure and support led her to struggle in a traditional school setting.

Expelled from her local middle school, Pace became her only option for continuing her education. At just 11 years old, the youngest girl in her class at Pace Polk, Destiny discovered a sisterhood that would become a cornerstone of her personal growth.

"I remember Miss Susan teaching us basic life skills, like how to brush our teeth properly and what we should do if we don't have toothpaste, because she knew a lot of us didn't. That kind of practical guidance was something I wasn't getting anywhere else. It was rough," Destiny recalled. "Pace was full of girls just like me, so it was comforting not to feel so alone."

Destiny completed her sixth-grade year at Pace, but traditional schools continued to be a challenge for her. She attempted to reintegrate into several schools, ultimately dropping out four times before returning to Pace. It was upon her return that Destiny found the focus and support she needed to complete her middle and high school education. A moment that still stands out to her is when Mrs. Laura, a teacher at Pace, provided her with a cap and gown for the graduation ceremony, as Destiny couldn't afford her own. "That simple act of kindness has stayed with me all these years and helped shape who I am today," Destiny said.



After high school, Destiny took time to establish herself, eventually returning to education. In 2021, she graduated from Hillsborough Community College with an Associate of Science in Criminology and Criminal Justice. Her first real job came when she was hired by the Department of Children and Families (DCF) at their Lakeland office. The impact of Pace was so profound that Destiny sought out her former social worker to share the news. "She had such an impact on me that after more than 15 years without contact I wanted to share the good news with her first."

Today, Destiny is not only a College and Career teacher at New Beginnings High School but also a mother of two with plans to pursue a law degree. "I drive a minivan now," she notes with a smile, "It's such a symbol of suburban normality, but I'm not anything like you'd expect someone with my upbringing to be. And Pace should be credited with that."

Destiny's relationship with her daughters has also been shaped by her experiences at Pace. She fondly remembers a Christmas program at Pace where she was gifted a book, *The Daring Book for Girls*, with a chapter specially bookmarked by her teacher. That book, now passed down to her first-born daughter, still holds a place of significance in their lives.

Looking back, Destiny attributes her success to hope, a driving force that has guided her through the most challenging times. Her advice to current Pace girls and other young people facing difficulties is simple yet powerful: "Everything you go through is temporary. You will get there. You just have to persevere."

2024 MILESTONE MOMENT

January 2024:

More than 100 Pace girls from across the state met with members of the Florida House, Florida Senate and other elected officials and leaders to share the impact of Pace's model at Pace Day at the Capitol.



Nailah - Pace Leon



Jeh'monie Pace Marion



Jocelyn - Pace Manatee



Ar'Riana - Pace Orange

Amya has plans on joining the US Navy. ▶

ALUMNAE PATHWAY



I want to continue to push myself toward greatness."

- Amya G.





Florida Blue and Pace: A Partnership Shaping Opportunities

Florida Blue has been a significant supporter and partner of Pace Center for Girls for many years, demonstrating a profound commitment to the future of girls and young women across communities in Florida. Their generous investments in our programs provide essential support, helping empower young women as they navigate their unique journeys.

In the following conversation, Susan Towler speaks with Marlee, a young woman enrolled at Pace Jacksonville. They discuss Susan's role at the Florida Blue Foundation and the impactful partnership between our organization and Florida Blue. Susan also shares her personal journey and her commitment to serving communities across Florida.



Susan B. Towler is the executive director of the Florida Blue Foundation, established in 2001 as the philanthropic affiliate of Florida Blue. She is also the executive director of corporate social responsibility (CSR) for Florida Blue and has responsibility for the company's philanthropic strategy.



We have six values: respect, imagination, inclusiveness, integrity, courage and excellence. When I think about those, all of those relate to Pace."



2024 MILESTONE MOMENTS

February 2024:

Pace expands virtual therapeutic services to support girls and young women by launching TelePace in Broward County.

March 2024:

Pace and the Delores Barr Weaver Policy Center announce a partnership to conduct a comprehensive review on the current state of girls and young women. This collaborative effort marks a significant step towards understanding and addressing the multifaceted challenges faced by adolescent girls in today's society.

ALUMNAE PATHWAY



◀ Kahlaurah has been accepted into Arizona State University where she will study veterinary science.

Jossmaire received a merit scholarship to Jacksonville University, where she will study marine biology. ▶



Madinah - Pace Palm Beach



Lacey - Pace Pasco



Isabella - Pace Pinellas



Evani - Pace Polk

DAY PROGRAM

Pace's Day Program is center-based and provides year-round education, counseling, and life skills training for a comprehensive and individualized experience for middle and high school-age girls.

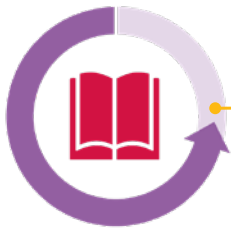
2,092
GIRLS SERVED

15
AVERAGE AGE

40%
MIDDLE SCHOOL

58%
HIGH SCHOOL

ACADEMICS

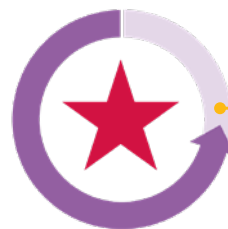


AS A RESULT OF PACE

7 in 10 GIRLS
improved academically,
measured by Florida
STAR testing

Before Pace, 8 in 10 girls were failing school six months prior to attending Pace.

PERSONAL GROWTH



AS A RESULT OF PACE

7 in 10 GIRLS
strengthened or maintained
self-efficacy, the belief that
you can succeed

Before Pace, 7 in 10 girls demonstrated behaviors related to juvenile delinquency.

COMMUNITY ENGAGEMENT



AS A RESULT OF PACE

9 in 10 GIRLS
are engaged in their
community, measured by an
increase in healthy behaviors

Before Pace, 7 in 10 girls were disengaged in school and community life.



Ryann is pursuing her passion in gymnastics as a full-time Gymnastics Coach. ▶

REACH PROGRAM

Pace Reach is a therapeutic and counseling program offering social, emotional, and behavioral health and support services for girls ages 11–17 and their families. Reach therapists provide services in partnering schools, homes and other community locations.

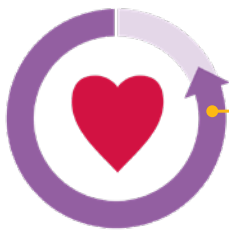
1,310
GIRLS SERVED

14
AVERAGE AGE

50%
MIDDLE SCHOOL

49%
HIGH SCHOOL

SOCIAL RELATIONSHIPS



AS A RESULT OF PACE

8 in 10 GIRLS
improved healthy social relationships with peers and family members

Before Pace, 5 in 10 girls were feeling sad or hopeless, including thoughts of self-harm.

COMMUNITY ENGAGEMENT



AS A RESULT OF PACE

9 in 10 GIRLS
are engaged in their community, measured by an increase in healthy behaviors

Before Pace, 7 in 10 girls were disengaged in school and community life.

Teddy Thompson

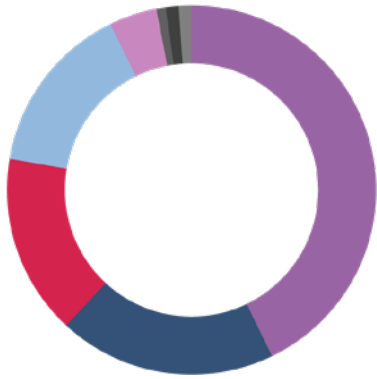
Chief Program Officer

As the Chief Program Officer, Teddy Thompson oversees the overall implementation and performance of the Pace Center for Girls' program models and leads the development, operations, evaluation, and growth of these models. He is responsible for developing, strengthening, and managing a comprehensive array of gender-responsive program services across multiple states, setting organizational and programmatic vision and priorities, and building a strong and collaborative organizational and program team culture.

[CLICK HERE to read Teddy's letter.](#)

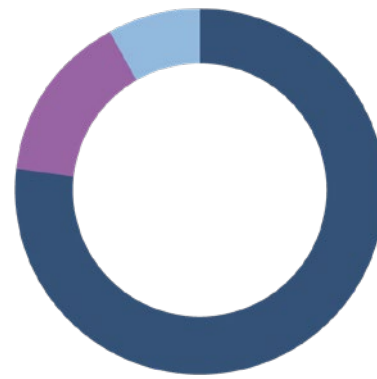


FINANCIALS



REVENUE **\$59,739,479**

- Department of Juvenile Justice (FL) 43%
- Private Grants 19%
- Federal 16%
- School Board 15%
- Individual Contribution 4%
- Other 1%
- Department of Juvenile Justice (SC) 1%
- Department of Family & Children's Services (GA) 1%



EXPENSES * **\$62,712,381**

- Program 78%
- Management & General 15%
- Fundraising 8%

* Over the past few years, Pace has made several long-term investments in the organization's growth to better serve our girls, families, and communities and to recruit and retain top talent. These include professional development for our staff, curricula for our girls in the classroom and in counseling and therapy sessions, in addition to investments in our facilities. Pace utilized investments to cover these long-term initiatives for the continued strategic growth of the organization.



ALUMNAE PATHWAY

Success at Pace takes many forms. Through our Reach Program in Georgia and South Carolina, we provide services to middle and high school girls directly in their community and local schools, helping them strengthen their social and emotional well-being. Congratulations to the 8th-grade graduates of Palmetto Middle School's Pace girls!

2024 MILESTONE MOMENTS

April 2024:

Pace publishes White Paper "Helping Teachers Succeed: A Framework Rooted in Building School Belonging for Teachers of Students with High-Risk Factors," that addresses the critical issue of strengthening supports for teachers amidst the national teacher shortage crisis.

May 2024:

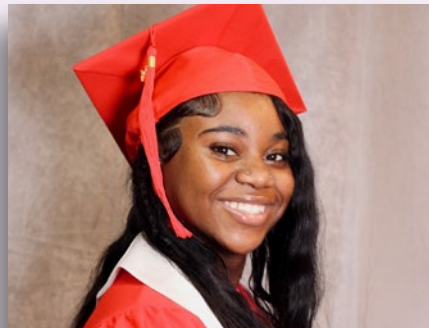
Pace signs groundbreaking MOU with Miami Dade College to address the teacher shortage by creating a direct pipeline from MDC to teaching positions at our 21 centers.

June 2024:

Pace leaders, along with partners from Miami Dade College, presented the findings from our white paper on teacher belonging at the U.S. Department of Education EED Summit in Washington, DC.



Trinity - Pace South Carolina



Naykerria - Pace Treasure Coast



Lilyana - Pace Volusia

Pace Locations and Contacts

NATIONAL OFFICE

Mary Marx, President & CEO
Pace Center for Girls, Inc.
6745 Philips Industrial Blvd.
Jacksonville, FL 32256

ALACHUA

Heidi Keegan, Executive Director
Pace Center for Girls, Alachua
1010 SE 4th Ave., Gainesville, FL 32601

BROWARD

Sara Nuñez, Executive Director
Pace Center for Girls, Broward
2225 N. Andrews Ave.
Wilton Manors, FL 33311

CITRUS

Angela Kennedy, Executive Director
Pace Center for Girls, Citrus
3630 W. Educational Path Lecanto,
FL 34461

CLAY

Genelle Thomas, Executive Director
Pace Center for Girls, Clay
429 College Drive
Middleburg, FL 32068

COLLIER AT IMMOKALEE

Marianne Kearns, Executive Director
Pace Center for Girls,
Collier at Immokalee
160 N. 1st St., Immokalee, FL 34142

ESCAMBIA-SANTA ROSA

Laurie Rodgers, Executive Director
Pace Center for Girls, Escambia-Santa Rosa
1028 Underwood Ave., Pensacola, FL 32504

GEORGIA

Rebecca Richard, Reach Program Director
Pace Center for Girls, Macon
401 Monroe St., Suite F1 Macon, GA 31201

HERNANDO

Kimberly Buford, Executive Director
Pace Center for Girls, Hernando
3139 Dumont Ave., Spring Hill, FL 34609

HILLSBOROUGH

Davia Lerebours, Executive Director
Pace Center for Girls, Hillsborough
1933 E. Hillsborough Ave., Suite 300,
Tampa, FL 33610

JACKSONVILLE

Chantell Miles, Executive Director
Pace Center for Girls, Jacksonville
2933 University Blvd. N.
Jacksonville, FL 32211

LEE

Jennifer Cellitti, Executive Director
Pace Center for Girls, Lee
3800 Evans Ave., Ft. Myers, FL 33901

LEON

Dr. Tyneal Haywood, Sr.
Executive Director
Pace Center for Girls, Leon
311 E. Jennings St., Tallahassee, FL 32301

MANATEE

Amy C. Wick Mavis, Executive Director
Pace Center for Girls, Manatee
4030 Manatee Ave W., Bradenton, FL 34205

MARION

Laura Burgess, Executive Director
Pace Center for Girls, Marion
328 NE 1st Ave., Suite 500, Ocala, FL 34470

MIAMI

Sherry Thompson Giordano,
Executive Director
Pace Center for Girls, Miami
1400 NW 36th St., Suite 200
Miami, FL 33142

ORANGE

Raquel McCormick, Executive Director
Pace Center for Girls, Orange
445 N. Wymore Rd., Winter Park, FL 32789

PALM BEACH

Mindy Hanken, Executive Director
Pace Center for Girls, Palm Beach
1640 S. Congress Ave., Palm Springs,
FL 33461

PASCO

Ellen Katzman, Executive Director
Pace Center for Girls, Pasco
7545 Little Road, New Port Richey,
FL 34654

PINELLAS

Dena Hernandez, Executive Director
Pace Center for Girls, Pinellas
4000 Gateway Center Blvd. N., Suite 400,
Pinellas Park, FL 33782

POLK

Theresa Evans, Executive Director
Pace Center for Girls, Polk
213 Tyler Ave., Lakeland, FL 33801

SOUTH CAROLINA

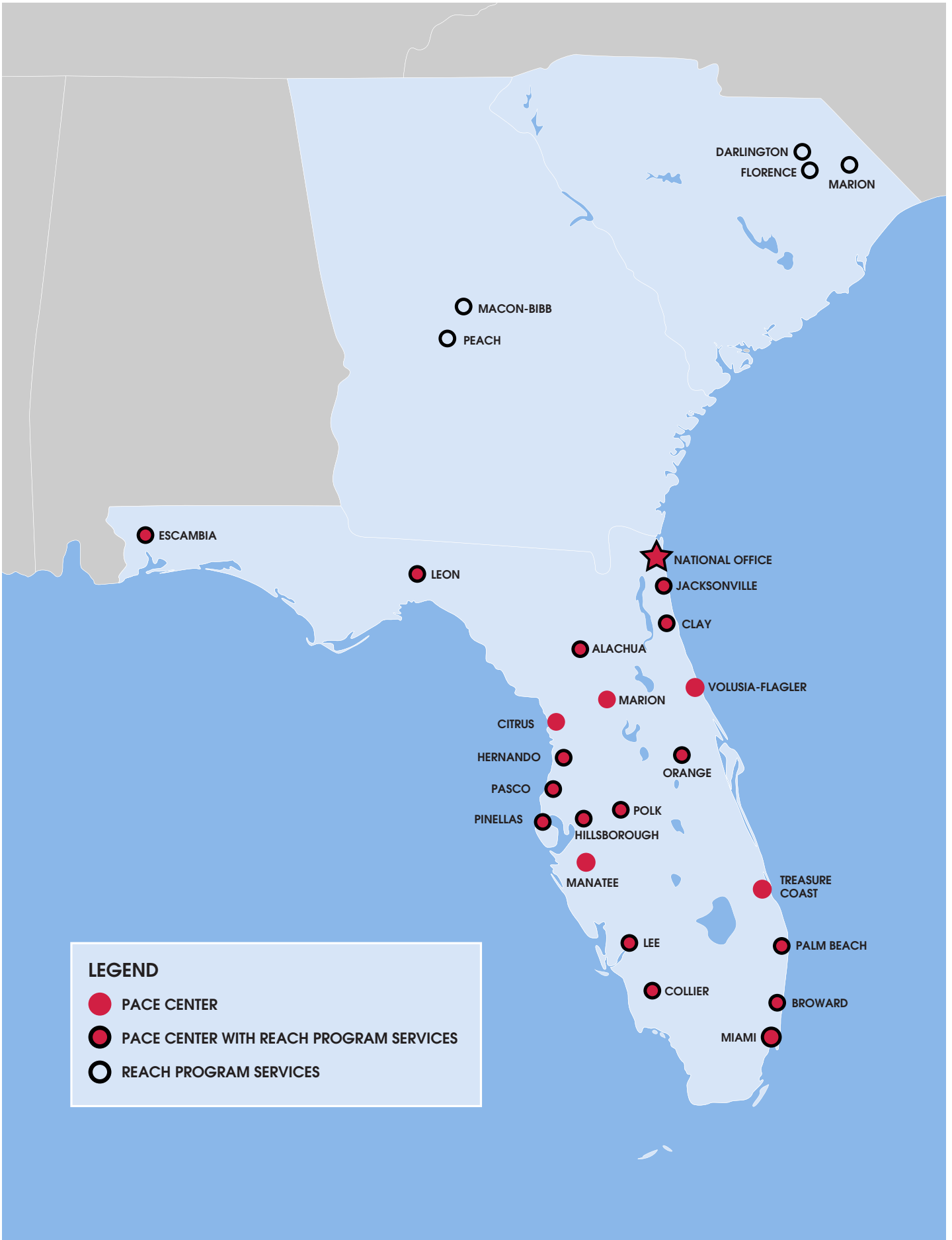
Lisa Spears, Reach Program Director
Pace Center for Girls, Darlington
525 Spring St., Darlington, SC 29532

TREASURE COAST

Terri Shermett, Executive Director
Pace Center for Girls, Treasure Coast
3651 Virginia Ave., Ft. Pierce, FL 34981

VOLUSIA-FLAGLER

Sheila Jordan, Executive Director
Pace Center for Girls, Volusia-Flagler
208 Central Ave., Ormond Beach, FL 32174



BOARD OF TRUSTEES

Brittany Perkins Castillo, Chair

Chief Executive Officer, AshBritt Environmental

Marva Johnson, Vice Chair

Group Vice President, State Government Affairs, Charter Communications South Region

Senator Anitere Flores, Secretary

Former Senator, Director of Development for the ACE Foundation

Karen O'Byrne, Treasurer

Senior Vice President, Value Creation Warburg Pincus LLC

Mark Barnes

CPA, DiBartolomeo, McBee, Hartley & Barnes

Colleen Brennan

Vice President, Chief Integrity and Compliance Officer, GuideWell Mutual Holding Corporation

Denise Cobb

Founding Trustee, Naples Children & Education Foundation

Melissa Fulmore-Hardwick

CIO, The CSI Companies

Crystal Ganpath-Freed

Assistant State Attorney, Office of the State Attorney, Florida's Fourth Judicial Circuit

Maryam Ghyabi-White

CEO/President of Ghyabi Consulting & Management (GCM)

W. Yodit Kagombe

SVP, Technology Executive Bank of America

Derek Koger

Executive Director of Tribal Community Development, Seminole Tribe of Florida

Michelle McGovern

Regional Vice President, Government & Regulatory Affairs, Comcast Florida

Katrinda McQueen

Vice President, Communications, Coca-Cola Florida

Madeline Pumariega

President, Miami Dade College

Justice Peggy Quince

Retired Florida State Supreme Court Judge

Stephanie Smith

Vice President of State and Regional Affairs, Tampa Electric and Peoples Gas

Mark Snead

Global Managing Partner, Accenture (ret)

Michael Stephens

General Counsel and EVP for Tampa International Airport

Debbie Toler

Vice President Business Development, Jack Morton Worldwide (ret), C2 Creative (ret)

Sandy Stilwell Youngquist

Chief Executive Officer & Owner, Stilwell Enterprises & Restaurant

We greatly appreciate each gift given in support of Pace, and we have made every effort to ensure the accuracy of this listing. We regret any errors.

Donors

*Giving Society

NATIONAL OFFICE

\$150,000 - \$249,999

Fidelity Foundation
Florida Blue Foundation
Fondation CHANEL
Jacarlene Foundation
Simply Healthcare Plans, Inc.

\$100,000 - \$149,999

Michael Ward and Jennifer Glock Foundation
State Farm Insurance Companies

\$50,000 - \$99,999

Enterprise Holdings Foundation

\$25,000 - \$49,999

4 Girls Foundation, Inc.
Bill and Deborah Toler

\$10,000 - \$24,999

AC Disaster Consulting LLC
Ashbritt Foundation, Inc.
Brittany Perkins Castillo
Capital City Consulting, LLC
Charter Communications
Mary Marx and Michael Fitch

Tetra Tech, Inc

The Warburg Pincus Foundation

Toler Family Foundation Inc

U.S. Bank Foundation Grants Program

UnitedHealthcare Services, Inc.

\$5,000 - \$9,999

American Solutions for Business

AmTrust North America Inc

Charles Burke

Comcast Corporation

Karen and Joe O'Byrne

Michelle and John McGovern

Philadelphia Insurance Companies

T.Mak's International Inc.

\$1,000 - \$4,999

Adrienne Propp

Amy Kovach

Anna Maria Oyster Bar, Inc.

Annabelle Burgett

David and Martha Tuthill

The Mayernick Group, LLC

HCA Florida

James and Diann Seals

Jamie Stuart

Jenny Shaw

Jeremy P. Miller

Joe and Eileen Marx

John and Crystal Gehl

Peggy Quince

Robert Wood Johnson Foundation

Robin Abraham

The Dugger Giving Fund

Thresa Giles

ALACHUA

\$50,000 - \$99,999

Carlson Family Foundation

Children's Trust of Alachua County

Raymond James Charitable Endowment Fund

\$25,000 - \$49,999

Jim & Amy Hill

Board Of County Commissioners

Alachua County

Give Back for Impact, Inc.

Anonymous

United Way of North Central Florida

\$10,000 - \$24,999

Alejandro & Camille Pauly

Bill & Celia Burger

Community Foundation of North Central Florida

Cynthia Campbell

Anonymous

Mary Sanford

Operation Impact

Pure Aesthetics, LLC

Anonymous

Sandra S. Kramer

Sandra S. Kramer Charitable Fund

TJX Foundation, Inc.

UnitedHealthcare Services, Inc.

\$5,000 - \$9,999

Aleksander Levental

Ann Marie Rogers

Anna Olcese

John & Bridget Fleming

Dorene D. Ross

Esther Negrin

Fred & Kathy Southwick

GitHub

Heather & Kelley Jones

Jack Ross

Jeannine F. Hogue

John & Kathy Kish Family Charitable Fund

John E Poppell Charity Fund

John & Kathy Kish

LPL Financial

Mailande B. Holland

Makesense Foundation

Nicole Mullally

Publix Super Markets Charities, Inc.

Spain Chrysalis Scholarship Endowed Fund

Tides Center

Wing Stop Charities

Women's Sports Foundation

\$1,000 - \$4,999

Alavi & Pozzuto, P.A.

American Fundraising Foundation, Inc.

Amy Murad

Andrea Lister

Ann B. Boyd

Ariana Aragon

Attorneys Fine, Farkash & Parlapiano PA

Avera & Smith LLP

Barbara Boyd

Carole E. & Bill Zegel

Brent Spaulding

Brian Kramer

Bryan Nazworth

Bryce A. Burger

Capital City Bank

Catherine Price

Chacon Diaz & Di Virgilio Wealth Management

Charles Schwab

Charna Cohn

Cherie Fine

Cheryl L. Scott

Christopher Sims

Coach Spurrier

Coleen DeGroff

Cynthia Marks

Dalton Family Foundation

David E. Menet

Delinda Smith

Della Tuten

Digital Brands

Elizabeth Stevenson

Emily Patton

Emily Pritchett

Ericka Ryals

F. Kayser Enneking

Feathr

Gaines Plastic Surgery

Gainesville Charitable Foundation

Gina van Blokland

Gladys Cofrin

HBC Foundation Inc.

HCA Florida

North Florida Hospital

Harold & Emily Patton

Info Tech Inc.

Inspired by Giving

James D. Salter

James P. Nilon

Jay Blankenfeld

Jen Hernandez

Judith H. Watkins

Justin Mowitz

Kail Partners, LLC

Katherine Durst

Kathryn Clark

Kelly K. Gurka

Ken and Laura Berns

Kinetix Physical Therapy PA

Kris Lier

Lauren Groff

Lee A. Salter

Leslie C. Nilon

Leticia Oleksy

Linda Abeles

Linda Ables, Phd. Inc.

Ken & Linda McGurn

Lonnie Phillips

Ludivine C. Kail

Mary Trew

Maureen C. Tartagione

Donors

Melissa Cere	WJ Rossi	BBX Capital	Florida Power & Light Company	Centennial Bank
Michael J. Welker	Yajaira Kropp	Brittany Perkins Castillo	Harry T. Mangurian, Jr. Foundation	City of Wilton Manors
Naima Brown	Scott & Doreen Webster	Broward Sheriff's Office (BSO)	Jeffrey Olefson	Coldwell Banker Residential Real Estate CARES Foundation
Nicci Brown	\$500 - \$999	Casa D' Angelo/ Denise & Angelo Elia	Karen & Joe O'Byrne	Colonial Roofer Services, Inc.
Pamphalon Foundation, Inc.	Scott & Doreen Webster	Children's Opportunity Group	Memorial Healthcare System	David Donnellan
Pinellas Community Foundation	BROWARD	Circle of Friends Foundation/Joanne and Mark Snead	Michael Perlman	Dawn Stagliano
Quality Design Works, Inc.	Children's Services Council of Broward	E5 Events, LLC	Perlman Family Foundation	Donald J. J. Doody
Quality Plumbing of Gainesville, Inc.	\$250,000 - \$999,999	Florida Panthers Foundation	Publix Super Markets Charities	Eileen & Chip LaMarca
R & D Smith Fund	Community Foundation of Broward	Giselle Cheminand	Regions Bank	Emily & Ryan Stark
Ranesha Boston	\$150,000 - \$249,999	Leo Goodwin Foundation	Susan & Jack Loving	Erika F. Jung
Raymond James Global Account	Frederick A. DeLuca Foundation	Menendez/Corban Fund of the Community Foundation of Broward	The Community Foundation Harrisonburg-Rockingham	Fiona & Kal Evans
Robert Curry	\$100,000 - \$149,999	Ohio National Financial Services	The Lozick Family Foundation	Florida Virtual School
Robyn Hoelle	United Way of Broward County	Penelope Blair	The Warburg Pincus Foundation	Gaddis Family Foundation
Rod Smith	\$50,000 - \$99,999	Sally M. Perkins	Transworld Business Advisors	Gavin Elliot
Rubye P. Sullivan	Broward College	Sheila Bechert	\$1,000 - \$4,999	Haliczer, Pettis and Schwamm, PA
Rupasri Lloyd	Mary N. Porter Designated Fund of the Community Foundation of Broward	South Florida Business & Wealth/Lifestyle Media Group	Aggie A. Pappas	Hard Rock International Inc.
Ruthanne L. Curry	Mary-Jane Graff - In Memoriam	The Jones Family Foundation	Alan Perlman	Henry Stella
Salter Feiber, P.A.	Topfer Family Foundation	The William R. Watts Foundation	Alexandra Escobedo	Irene Phillips
Scorpio	\$25,000 - \$49,999	Walgreens	Ashley Boxer	Jacqueline & Jason Howe
Sheyna N. Carroccio	Amaturo Family Foundation	\$5,000 - \$9,999	Ashley Gordon	John Bochak
Stanley Given	Cleveland Clinic Florida	Allison & Andrew Cagnetta	AvidXchange, Inc.	Kathleen Thomsen
Stephen Fine	Jim Moran Children's Fund	Appleseeds Foundation Fund	BankAtlantic	Kenneth Fisher
Steve & Cathryn Price	John Ulbrich Charitable Trust	BankUnited	Barnes Preston Global CPAs	Kip Hunter & Joey Epstein
Studio32 Orthodontics	Meike & Dominick Miniaci	Bryan Wilson	Berger Singerman LLP	Kristin LaFleur
Tania Z. Alavi	UKG	Cathy and James Donnelly Family Fund	BMO Commercial Bank	Krupnick, Campbell, Malone, Buser, Slama, Hancock Fund
Tara Edelstein	\$10,000 - \$24,999	Childrens Aid Club	Bochak Family Children's Fund	Lauren Gallart
The Gladys C. Cofrin and Daniel Logan Fund	4 Girls Foundation	Christy & Andy Gumberg	Brown Financial and Consulting Services Group	Lawrence Blocker
The Howard & Emily Patton Fund	Amazon	Edward Jones	Campaign to Elect Harold Pryor	MaryKate Wood
The Mills Group LLC	Anonymous		Carman Law Firm, P.A.	Michael Berry
Tonya Love-Dixon	Ashley Santiago		Castle Group	Michele Baker
Tracy Burger	Bank of America Charitable Foundation			Morgan Stanley
Vanguard				Nancy Banks
Vipul Patel				Nikeisha Pryor
Wanda N. Tuttle				Pamela Africk & Shari
Willard Watkins				

Donors

Africk-Olefson	CITRUS	\$1,000 - \$4,999	\$25,000 - \$49,999	Charities Aid Foundation of America
Paul Sallarulo	\$10,000 - \$24,999	Acrisure	Carol B Phelon Foundation	Charles J. Maxwell
Raymond Berry	Suncoast Credit Union Foundation	Angela Langlois	FineMark National Bank & Trust	Chris Lecca
Richard S. Ingham	United Way of Citrus County, Inc.	Dr. Anna Lebesch	Hollinger Associates	Cynthia Beauchamp
Rick Case Automotive Group	\$5,000 - \$9,999	Ascension St. Vincent's Clay County	John R. Hutter	Daniel Peregrin
Rita Case	Citrus County Community Charitable Foundation	Cindy Bosnyak	June H. Jones Foundation Inc	Eglis Marisol Hakanson
Rose Pontorno	\$1,000 - \$4,999	Clay Chamber, Leadership Clay Class of 2024	Michael & Karen Stabile	Gin Trin Fund
Sadaka Family Charitable Fund	Amy Meek	Destani Shadrick	Patricia A. Patterson and William Ferry	Gulf Coast International Properties
Sara & Bill Nunez	Bluewater Aviation	Doris and Emile Latour	WINGS Fund	John Houlton
Setnor Byer Insurance & Risk	Callicarpa Hair Design LLC	Full Circle Counseling Services, LLC	\$10,000 - \$24,999	Joseph R. Girard
Shari Cedar	Citrus County Chamber of Commerce	Gail Arrowsmith	Arthrex, Inc.	Kristin Cartwright
Shawn Oden	Citrus County Education Foundation, Inc.	Gordon Chevrolet Orange Park	Bill & Kathy Avery Charitable Fund	Lisa Khan
Sonali & Chris Garvin	Citizens First Bank	HCA Florida North Florida Hospital	Cassi Handler	MidWestOne Bank
Soroptimist International of Davie	Colonial Jewelry and Pawn, Inc.	IMCJAX LLC	Claudine Leger-Wetzel	New Haven Builders
SouthState Bank	Elwood Harding	Journey Church of Clay County	Daniel & Peggy Lekander	Publix Super Markets Charities, Inc.
Stacy M. Schwartz	Grow-Land LLC	Lisa Dease	Brian and Denise Cobb	Raymond James Charitable Endowment Fund
Susan and Bateman Blair	Jewel Lamb	Mona Gardella	Elizabeth K. Galeana Charitable Foundation, Inc.	Richard W. Breithaupt
Suzette K. Bravo	Keith Taylor Law Group	Pajcic & Pajcic Pa	Jeffrey and Julie Diermeier Fund	Ricky Redish
Suzie Horovitz Maurer & Laurence Maurer	Rotary Club of Inverness	Pete & Angela Langlois	Jingled Elves Inc.	Sandi Moran
The Boxer Strategy	Seacoast Bank	Publix Super Markets Charities, Inc.	John Sinnenberg	Seminole Indian Casino-Immokalee
The Elgidely Family	Selinda Jones	Ragsdale Liggett PLLC	Kristin Mckenna	Toler Family Foundation Inc
The Figgers Foundation	Trish Thomas	Ridgeview High School Girls'Weightlifting Team	Levi, Ray & Shoup Foundation	Victoria Tracy
The Garvin Family Charitable Foundation	Vera Swade	The Chemours Company FC, LLC	Scott & Simone Lutgert	Village on the Bay, LLC
The Pryor Law Group, P.A.	CLAY	The Paul E. and Klare N. Reinhold Foundation, Inc.	Stan & Suzan Ruta Family Charitable Fund	Virginia M. Forget
Touch a Heart Foundation	\$25,000 - \$49,999	COLLIER	The RegisBeth DAF	\$1,000 - \$4,999
Vicki Abernathy	United Way of Northeast Fla Inc	\$100,000 - \$149,999	The Williams Group Inc	4 Girls Foundation, Inc.
Wake Worx Llc	\$10,000 - \$24,999	Naples Children & Education Foundation	U.S. Bank Foundation Grants Program	Ken & Adrienne Charak
Will Spencer	Clary & Associates Professional Surveyors & Mappers	\$50,000 - \$99,999	West Bay Community Charitable Foundation, Inc.	Alanna Morey
Women's Executive Club	Clay Electric Foundation, Inc.	Clark Family Foundation, Inc.	\$5,000 - \$9,999	Allison Rainey
Womens Fund of the Community Foundation of Broward		Collier Community Foundation	ARPA Support for Nonprofits Fund	Alysa Snyder
Zonta Club of Greater Deerfield Beach			Ashley Santiago	Amber Phillips
				Ameriprise Financial
				Amy Nease
				Arlene Shapiro
				Arthur Lucien
				Barbara D. Copeland

Donors

Barbara Owens	Jennifer Haire	MHK Architecture	Suzy Beth Sarver	Raynier Institute & Foundation
BCB Homes, Inc.	Jennifer McNamara	Michael Frino	Take Hart Carpentry Inc.	The Bear Family Foundation, Inc.
Belinda Malolli	Jennifer Russo	Michael Weidner	Tan Nguyen	\$5,000 - \$9,999
Carole A. & James J. Burns Fund	Jennifer Westerman	Michele Davidson	Tanya Russell	Andrea Gheen
Christine Chase	Jim Borden	MJWW Charitable Foundation	The Allstate Foundation	Anonymous
Christine Faulks	John R. Wood Properties	Molly Grup	The Fifth C Foundation	Ashlee & Grant Hofberger
Christine Squires	Jon Bremseth	MVP Solutions of Florida	The Forum Club of Southwest Florida	Bank of America Charitable Foundation, Inc.
Cindy Littrell	Judith Liegeois Designs Inc	Nancy J. Grandis-White	The Scottsdale Company	Bill & Janis Foley
Connor & Gaskins Unlimited, LLC	Juliane Callis	Nancy L. Barone	The Welltower Charitable Donor Advised Fund of the Greater Toledo Community Foundation	Brenda C. Johnson
Cool Boats, LLC	Karol M. Smith	Sea Salt Naples	Treasure Rose Inc	Edward Jones
Craig Hazelett	Kathryn E. Reese	Open Your Heart to Children Int	Trish D. Leonard	Escambia County Sheriff's Office
Cynthia Russell	Keegan and Florice Hodges Charitable Fund	Lilly Pulitzer LLC	William F. Brock	Florida Power & Light Company
Daynelis Perez	Kelly Richards	Pasqualena Belfiore	Wintrust Financial	Gray Boutique - Miss Elise LLC
Deborah C. Brittain	State Farm Agency	Paul Hiltz	\$500 - \$999	GRC Property Management
Denise Murphy	Kenneth Love	Premier Sotheby's International Realty	Chris Shucart	International Paper
Doug Hache	Lake Michigan Credit Union	Renee Beechler	Christin Schmidt	James & Ann Neal
Edith Hunt	LCEC	Richard Hart	Samantha Bloom	Jewelers Trade Shop
Eliza Crowder	Lesley Colantonio	Richard Weisberg	ESCAMBIA	Kerrigan Family Charitable Foundation, Inc.
Equinox Construction Group, LLC	Leslie Frecon	Robert and Christine Faulks Woodpile Fund	\$150,000 - \$249,999	Key Sailing Inc.
Erin Otterbeck	Linda Burnham	Rochelle Jackson	Merlyn "Rica" & Milton Rogers	Marcella K. Miller
Ernie Harris	Linda J. Brandis	Ronald Johnson	\$25,000 - \$49,999	Margie & Alan Moore
Florida Hometown Title & Escrow	Linda J. Hurley	Sage Events Catering LLC	Santa Rosa Energy Center, LLC	Margot & Frank Lauro
Give Back Foundation	Linda Najim	Sandra Stilwell Youngquist	\$10,000 - \$24,999	Melissa & Robert Sidoti
Greater Toledo Community Foundation	Lutgert Construction, LLC	Sharon Henry-Woodby MD	Advanced Dental Concepts	Pensacola Eggfest
Green Heron Fund	Lutheran Women's Missionary League	Sharon MD Parker Charitable Fund	\$10,000 - \$24,999	Rhonda & Steve Moorhead
Holly Shapiro	Marc Beaudet	Shay Trask	Aylstock, Witkin, Kreis & Overholtz, PLLC	Switzer Brothers Charitable Foundation
Home & Design Magazine	Margaret P. Blackburn	Southwest Florida Amateur Golf Association Inc.	Florida Blue Foundation	Turner Family Charitable Foundation, Inc.
Ilona Box	Marlys Barwick	Steven Barwick	Golly Enterprises LLC	United Way of West Florida
Jackie Nelson	Mary A. Marks	Suncoast Beverage Sales, LTD	Justine Simoni	
Jacqueline Peregrin	Mary L. Brandt	Susan E. Brock	Kathy & Roger Ostrander	
James J. Burns	Mary L. Taylor	Susan Joyce	Lewis & Jennifer Bear III	
James L. Snediker	Mary Marx		Mary & Matt Gamble	
James and Len Price	Matthew Kragh		Rachael & Albi Gilmer	
Jeffrey A. Clark	Melanie Glisson			
Jeffrey Garguilo & Valerie Boyd Family Foundation	Melinda Gunther			
	Melissa Speach			

Donors

\$1,000 - \$4,999

4EVR DEZ
 Adelene Murdoch
 Alexander Lucia
 Amber & Ben Gordon
 Anderson Giving Fund
 Ania & Douglass Kreis
 Ann Belleau
 Alphastar Wealth Management
 Appleyard Family Foundation
 Beggs & Lane
 Bethany Wilson
 Beverly & Thomas Vaughn
 Blair Rushing
 Blair S. Crooke
 Bonita Witkin
 Brenda Vigodsky
 Carmen Kircharr
 Cathy & Peter Butler
 Cheryl Young
 Chris Janes
 C. Jay & Susan Dunton Living Trust
 Cristina & Brian Williams
 Centennial Imports (Volvo - Mercedes Benz)
 Chris Lecory
 Christina & David Alsop
 Christina Doss
 Dana Goss
 Daniel Thornburgh
 Danielle & Spencer Mullet
 David Blaylock
 Diane L. Peterson
 Donna Dickey
 Donna Ward
 Elaine & Brooks Davis
 Escambia County BCC
 Gayle Piret

Gregory & Kimberly McWherter
 Gulf Breeze Optimist Club
 Gulf Coast Business Coaching
 Gulf Coast Plastic Surgery PI
 Gulf Marine Construction, Inc.
 Hanto + Clarke General Contractors, LLC
 Heidi Siren
 International Paper Foundation
 James Rigsbee
 Jarl & Deidre Young
 Jennifer & Chris Roney
 Jennifer & Iven Streckel
 Jennifer & Joseph Passeretti
 Jim Lee
 Jock Mobley
 John & Jerre Peacock
 John & Ruth Kane
 John & Vickie Bolyard
 Judith & Robert Zitzewitz
 Julie C. Griffin
 Julie Cardwell
 Karen & Ted Mansfield
 Karen Burke
 Karla & Ted Ent
 Kasey & John Armbruster
 Kathleen & Robert Decker
 Kellie Hardy
 Kristan Brinkley
 Kristen Deese
 Kristina & John Gormley
 Kyla Shaw
 Laura Keene & Barry Beroset
 Lauren Gaddy
 Lauren & Mike Cutter

Laurie Rodgers & Pat Parmley
 Lorese B. Hines
 Mandy Gist
 Marianne & John McMahon
 Mark Lee Realty Inc
 Mary Ann & Donald Needle
 Mary Catherine Harper
 Matt & Tamm Dannheisser
 Maureen McGill
 Michael Dolister
 Michelle Fraley
 Navy Federal Credit Union
 Pat Franklin
 Patricia C. McCormack
 Perri & Denis McKinnon
 Picard-Dannheisser Family Foundation
 Pizzaz, LLC
 Publix Super Markets Charities, Inc.
 Robert A. Pennebaker
 Scott T. Simmering
 Sean Long
 Shelley & Steve Black
 Sherie & Paul Snider
 Shimek Family Charitable Gift Fund
 Society of the Debutante Charity Cotillion
 Summer Rushing
 Summer's Sushi
 Susan & Brian Finger
 Tammy Timby
 The Bland Family Charitable Fund
 The Sansing Foundation, Inc.
 Theresa M. Morehouse

Therese & Alistair McKenzie
 Thomas & Marissa MacDonald
 Valerie & Ray Russenberger
 Victoria & Willis Mullet
 Vigodsky Family Charitable Foundation
 Viki & John Weir
 Virginia Bender
 Yoga ABODE LLC
HERNANDO
\$25,000 - \$49,999
 Frank Morsani
 Pem-Air Turbine Engine Services, LLC
\$5,000 - \$9,999
 Christina Gray
 Cabot Citrus Farms
 Global Jetcare, Inc.
 Gulfcoast North AHEC Inc
 Suncoast Credit Union Foundation
\$1,000 - \$4,999
 American Aviation
 Ashley McMeen
 Bart T. Gray
 Bluewater Aviation
 Brooksville Kiwanis Foundation Inc
 Hernando County Sheriffs Charities, Inc
 Mark Casanta
 Micro Matic USA
 Viking Chain Link
 Withlacoochee River Electric
HILLSBOROUGH
\$100,000 - \$149,999
 Kathryn Schoen
 The Schoen Foundation

United Way SunCoast (of Tampa Bay)
\$50,000 - \$99,999
 Chelsea Hoagland
 Erin Linehan
\$25,000 - \$49,999
 Charity Polo Classic, Inc.
 Maggie Potter
 MicroLumen Inc
 Misty Carson
 Raymond James Financial
\$10,000 - \$24,999
 Ament Family Charitable Fund
 APIW Tampa Chapter/ APIW, Inc
 Community Foundation of Tampa Bay
 First Foundation Bank
 Lauren Fenton-Valdivia
 Maureen Hegarty
 Samantha Sexton Greer
 Mercedes Taylor
 Reliable Claims Adjusting
 TD Bank
\$5,000 - \$9,999
 Amanda Pilcher
 Andrew Gordon
 Carlton Fields Attorneys at Law
 Cathy Kamm
 First Horizon Bank
 Kim Jensen and Tom Elsen Family Foundation
 Live Nation Worldwide, Inc.
 N-41 Bingo
 New York Yankees Foundation
 Nielsen
 Publix Super Markets Charities, Inc.

Donors

Raymond James Charitable Endowment Fund	Dianne & Brad Ament	\$900 - \$999	Connie Menor	VyStar Credit Union
Richard Dahm	Equitable Foundation Inc.	Home Frosting	C.U.T. Consignment	Zimmerman Family Foundation
Shutts & Bowen, LLP	Gregory Linn	Jennifer Fosdick	Cynthia & James Edgar	\$1,000 - \$4,999
Suncoast Credit Union Foundation	Halo Homes Tampa, LLC	Michelle Sanchez	Heather Nathanson	ABC Liquors, Inc.
TD Charitable Foundation	Hillsborough County Sheriff's Office / HCSO Charities	JACKSONVILLE	James Van Vleck	Aetna
The Linehan Family Foundation	JBM Advisors	\$50,000 - \$99,999	Jane & Mark Riechmann	Alysa Carmichael
USI Insurance Services, LLC	Jennifer Jackson	Delores Barr Weaver Fund	Jean Manz	AmTrust North America Inc
Wells Fargo Foundation	Joena Bartolini Mitchell	The Community Foundation for Northeast Florida	Jennifer L. Betz	Amy & Tom Slater
William and Linda Cohen	Johnson Newlon & Decort P.A.	The Healy Foundation	Karen V. Nasrallah	Andrea Luebbert
\$1,000 - \$4,999	Justice Peggy A. Quince	United Way of Northeast Fla Inc	Kimberly Allen	April Jones
Adrea & James Garrison	Lauren Valiente	\$25,000 - \$49,999	Laura Gonzales	Arlington Lions Club
AMA Settlement Services, Inc	Liberty Mutual Insurance	Stuart Ashby-Fore	Leah Nowak	AT&T Telecom Pioneer-Jacksonville Life Member Club
Amanda J. Stevens	Margeaux Giles	TOTE Resources	Linda & David Stein	Atlantic Logistics, Inc.
Ambersley Foundation	Marty Lanahan	\$10,000 - \$24,999	Martha Fraser	Beta Sigma Phi
American Integrity MGA, LLC	Oglethorpe, Inc.	Allstate Foundation	Mary E. Warner	Brenda L Brooks Foundation Inc.
American International Group Inc.	Phelps Dunbar LLP	Brandice & David Landing	Nadine Gramling	Cheryl & Sonny Martin
Amgen, Inc.	Pricewaterhouse Coopers	Edna Sproull Williams Foundation	Patricia & David Henry	Cindy & David Baker
Anne and Scott Sticklin	Raquel Acuna	Florida Blue Foundation	Petway Family Foundation Fund	Christopher Hill
Annette R. and Ryan O'Malley	Robin Reynolds	Group 4 Desgin, Inc.	Pilar & James Dixon	Concentrix + Webhelp
Ardale Colhouer	Rocky W. Brancato	Jacksonville Jaguars Foundation, Inc.	Publix Super Markets Charities, Inc.	Contrise Williams
Autumn Bonsall	Ryan Specialty	Kelli Tice	Rae & Ronnie Brown	CSX Foundation
Bank of America Charitable Gift Fund	Sarah Wilson	Lynn & Gordon Bailey, III	Rebecca Crosby	CSX Transportation
Bank of Central Florida	Shook, Hardy & Bacon	Marco Family Foundation	Sarah Bohr	David Garrison & Terri Talley Venters Fund
Bressler, Amery & Ross, P.C.	Showmen's Association Charities Corporation	Mayo Foundation for Medical Education & Research	Selena Breedlove	Davida Carter
Burr & Forman LLP	Stevens Family Foundation	Modern Free Florida Higher Houses	Sharon Solomon	Emily Faulkner
Byrnes Family Foundation	Summit Consulting	Terry Family Foundation	Siobhan Cremin	GuideWell Florida Blue
CDW Corporation Charitable Gift Fund	Tampa Electric Company	The Thomas M. Kirbo and Irene B. Kirbo Charitable Foundation	Steve Betz	Helen M. Lane
Corcoran Partners	Teresa Goldberg	\$5,000 - \$9,999	Suzanne & Mark Horne	Holly Tyrrell
DeBartolo Family Foundation, Inc.	Warren Averett Companies, LLC	Amber & Sean Anthony	Tammi McGriff	Jamie Klosterman
	Zachary Smith	Arlington Optimists	The EJC Family Fund	JP Morgan Chase
	Zenith Insurance Company	Bank of America	Us Assure Inc	June C. Towbridge
	ZIMMERMANN	Comerica	Urvashi Patel	Kendra Scott, LLC
	Zurich American Insurance Company		Victoria Hahn & Craig Seeley	Leslie M. Redd
			Wahby Financial Group, LLC	Levenson Family Charitable Fund
			Whitney Heflin	

Donors

Lifeguard Systems Services	\$25,000 - \$49,999	AshBritt Foundation, Inc.	Constance White-Davis	Light Path Law
Lighthouse Wealth Management at Morgan Stanley	John E. & Aliese Price Foundation, Inc.	AWA Insurance	Cultural Park Theatre	Lake Michigan Credit Union
Lynne B. Klopff	Lee County Board of County Commissioners	Bob & Linda Taylor Foundation	David J. Crowther	Margaret Depew
Madaris Entertainment	Sanibel Captiva Community Bank	California Closets	Deanna Hansen	Maria Wiles
Mandarin United Methodist Women	Suncoast Credit Union Foundation	Doug & Carolyn Comrie	Deborah K. Campbell	Markham Norton Mosteller Wright & Co, P.A.
Nancy Nylark	The Richard M. Schulze Family Foundation	Cushman & Wakefield Commercial Property of SWFL	Deborah Z. Prather	Marshall T. Bower, Esq.
Nonprofit Center of Northeast Florida	\$10,000 - \$24,999	Brian and Denise Cobb	Diana Giraldo	Mary Marx
Pilot Club of Jacksonville, Inc.	B & I Contractors	Gary Tasman	Donna Carney	Mary Yankaskas
Regina Sooeey	Barbara Kuncil	Gray-Robinson, Attorneys at Law	Donna J. Caruso	Melissa Vogt
Remmer/Ryzewic Family Fund	David & Kellie Urban	Hard Rock Heals Foundation, Inc.	Ellie Fox	Michele McIntyre
RS&H, Inc.	Edison National Bank / Bank of the Islands	Holly Wilson	Esterio Newcomers Club	Michelle Brust
Scheidel Foundation	Elizabeth K. Galeana Charitable Foundation, Inc.	Julie D. Griffin	FineMark National Bank & Trust	Michelle Jansen
Sharon A. Taylor	Fran Myers	Lee Health	Florida Gulf Coast University Foundation, Inc.	Midland Trust
Superior Construction	Fred & Elaine Hawkins	Margaret Antonier	Friends of Amira Fox	Morgan Stanley Foundation
Susan Hughes	Gail Markham	Mike & Sally Jackson	Gary Griffin	Nancy B. & Howard K. Cohen
Susan Ryzewic	Jordan Ashley Gutheim Foundation Fund	Publix Super Markets Charities	Hodges Funeral Home	Noelle Casagrande
Teddy W. Thompson	Lighthouse Bay Charitable Foundation	Rich & Sandy Heinrich	Incredible Bank	Office of the Sheriff, Lee County
Tracey Capiello	Megan DiPiero Photography	Steve & Doris Colgate	Jacqueline Hurley	Pamela Cronin
Wahoo Logistics LLC	Priority Marketing	Suncoast Credit Union	Michael & Janice Danzig	Patricia A. Carroll
Wick Candle Bar	RJ Gorman Marine Construction	Susanna Woods	Jason M. Duke	Patricia Bell
Yanie Carlom	Seminole Casino Hotel	The Cape Coral Kiwanis Foundation, Inc.	Jason's Deli	Private Client Insurance Services
LEE	The ROS Foundation	The Papa John's Foundation Inc.	Jean M. Nicholson	Riverwoods Plantation RV Resort Condo Assoc., Inc.
\$150,000 - \$249,999	Tim Youngquist & Sandy Stilwell Youngquist	The RAK Charitable Fund	Jeff & Rebekah Barney	Rotary Club of Cape Coral Sunset, Inc.
B. Pat O'Rourke	Toler Family Foundation Inc	\$1,000 - \$4,999	Jeffrey and Louise Schrank Family Foundation	Ruth Messmer Florist
\$100,000 - \$149,999	\$5,000 - \$9,999	Amanda Cross	Jenna Persons-Mulicka	Scott & Diana Willis
Bobby Nichols-Fiddlesticks Charity Foundation	Alexandra R. Bremner	Amy McQuagge	Jessi Norvell	Sergio Nascimento
United Way of Lee, Hendry, and Glades Counties	Anna "Boots" Tolles	Bob & Meg Geltner	JoAnn C. Elardo	Southwest Florida Electric
\$50,000 - \$99,999	Aric & Megan DiPiero	Caloosa Tent & Rental	John Agnew & Suzanne Boy	Specialty Risk Management Services LLC
CFS Roofing Services	Arthrex Charitable Giving	Charles & Ginger Huether	Karen Bell	Stefanie Ink Edwards
Gunterberg Charitable Foundation		Cheryl Lenore Byrd	Karen Mosteller	Stuart Draper
		Claribel Bocanegra	Kay MacDougall and Sons Memorial Fund	Suffolk Cares
		Colonial Country Club of Lee County Master Association	Kelly L. Fayer, P.A.	Sunny Lubner
			Kendra Scott, LLC	Teri Hansen
			Kim Hostetler	

Donors

Terri Sobeck
 The Duke Moore Wealth Management Group - Morgan Stanley
 The Grove Horticulture Recycling & Biochar
 The Honorable & Mrs. James Seals
 Will & Ann Wittenborn
 William & Michele Holcomb
 Will T. Prather

LEON

\$50,000 - \$99,999

Children's Services Council of Leon County
 Leon County Board of County Commissioners

\$25,000 - \$49,999

United Way of the Big Bend

\$10,000 - \$24,999

Ameriprise Financial
 Sue & Harry Anstead

\$5,000 - \$9,999

Tiffany Ardley

\$1,000 - \$4,999

Akbar Thomas, LLC

Alicia A. Crew

Bare Waxing & Skin Care Center LLC

Cherry Lake Investments

Club 25 Women Of Tallahassee

Codie Bryant

Consulting Together Community Outreach, INC

Curtis Richardson

Eli Roberts & Sons

Elizabeth Hammock

Elizabeth Wallace

First Commerce Credit Union
 Florida Agricultural and Mechanical Univeristy Foundation

Graciela Marquina & Thomas Joiner

Janet L. Stoner

Merrill Lynch, Pierce, Fenner & Smith, Inc.

Natalie Parrish

Philip Pomeroy

Ragans & Roberts, Inc.

Rose Marie Young

Shamarial Roberson

Sherrill W. Ragans

Stewart Proctor

The Stoner - Crew Fund

Vanguard Charitable

Victoria Tschinkel

Wal Mart Stores, Inc.

Zonta Cares Inc.

\$500 - \$999

Ashley Chaney

Tracy Thomas

MACON

\$10,000 - \$24,999

Community Foundation of Central Georgia

Macon Violence Prevention Fund of the Community Foundation of Central Georgia

State of Georgia - Criminal Justice Coordinating Council

The John and Polly Sparks Foundation

\$5,000 - \$9,999

Georgia Power Foundation

MANATEE

\$250,000 - \$999,999

Manatee County Board of County Commissioners

\$150,000 - \$249,999

Deerbrook Charitable Trust

Manatee County Children's Services

\$100,000 - \$149,999

Bob and Joan Geyer

Daniel S Blalock, Jr. Charitable Foundation

\$50,000 - \$99,999

Bank of America

\$25,000 - \$49,999

Alexandra Ziegler

Conrad and Ruth Ann Szymanski

Green Charitable Trust

Laurie O'Loughlin

Louis and Gloria Flanzer Philanthropic Trust

Sandra Robinson

\$10,000 - \$24,999

Amanda and John Horne

Amy Wick Mavis and Greg Mavis

Andria Ludlum Howe and Dan Howe

Anna Maria Island Women's Giving Circle

Anna Maria Oyster Bar/Oysters Rock Hospitality

Christina Riggio

Cody and Chelsea Oelker

Julie and Sam Pakbaz

Karen Place

Katie Howard and Adam Martin

Neal Communities

Planet Stone Marble & Granite, Inc.

\$5,000 - \$9,999

Brian and Behany Carter

Brian and Nancy Coleman

Buzz and Dottie Turner

Cindy Jones-Burke

Darcie Duncan/Duncan Real Estate

Gift from the Heart Fund

Jane Stewart

Joanne Lester

Margaret and Brian Berry

Mosaic Co.

NDC Construction Co.

Pittsburgh Pirates/Bradenton Marauders

Publix Super Markets Charities, Inc.

Swordfish Grill & Tiki Bar

TDS Construction, Inc.

Verizon

W. Paul Hoenle Foundation

\$1,000 - \$4,999

Acme Termite & Pest Control

Acorn Management Partners LLC

Air & Energy

Allison Nelson

Alyssa and Joe Nohren

Andy and Anne Hemmert

Barbara Chastain

Barbara Jennings

Barbara Sato/Sato Real Estate, Inc.

BMO Harris Bank N.A.

Bob and Mary Miller

Buchanan Family Foundation

Caddy's Bradenton

Callaghan Tire

Carl Reynolds Law

Caryn Rose

Catherine Oakes

Christine Fioritto-Sket

Cindy Eley

Cortez Pump & Sprinkler, LLC

Dana and Larry Foerster

Daniel Howell

Daryl Brown

Deanie Sebring

DOGPerfect

Dr. Teresa Rawe

Early Learning Coalition of Manatee County, Inc.

Ed and Rebecca Herrman

Erin Brosious

Esposito Law Group

Frank Wilson

Ginny Goonan

Goldman, Babboni, Fernandez, Murphy & Walsh - Justice Pays

Grayhawk Windows Roofing Remodeling

Heather Knight

Heather Shrum

HSH Designs

Icard, Merrill, Cullis, Timm, Furen & Ginsberg

Insurance Time of Bradenton, Inc.

Jeff Phillips

Jim and Lori Toomey

Jodi Boyatt

John S. and James L. Knight Foundation

Kallins, Little & Brosious P.A.

Donors

Katherine Kerchner
 Katie Carter
 Kim and Greg Dalglish
 Knight Family Giving
 Lakewood Ranch Communities, LLC
 LaPensee Plumbing
 Laura McAdams/
 The UPS Store
 Lynn and Carl Callahan
 Mam'Selles Teen Service Club
 Manatee Memorial Foundation, Inc.
 Marisa Powers
 Mary Ann and Randy Allen
 Masonite International Corp
 Mauldin & Jenkins
 Michelle Greene
 Mike and Jaymie Carter
 Nancy Bancs
 Nancy Wolfe
 Peter Thinnes
 Roger Wick
 Ryan Johnson
 Sandy Shahinian
 Scott Kallins
 Service Club of Manatee County
 Shady Lady Horticultural Services
 Sharon and Mitch Yadven
 Sonny's BBQ
 Susan Kelly
 Tara Golf and Country Club
 TEGNA Foundation
 The Bradenton Women's Club

The Honorable Durand and Carol Adams
 The Plowman-Howze Family Peace Charitable Fund
 Tom Rees
 Trina and Scott Falkner
 Vera Cash Foundation, Inc.

MARION \$10,000 - \$24,999

City of Ocala
\$5,000 - \$9,999
 Angie & Clint Lewis
 Angie Lewis State Farm
 Charlie & Michelle Stone
 Craig Bachrodt
 Palmer Foundation, Inc.
 Publix Super Markets Charities, Inc.
 Stone Petroleum Products, Inc
 The David and Lisa Midgett Foundation
\$1,000 - \$4,999
 Allen S. Musikantow
 Anne A. Berman
 Brad & Tammy King
 Cindy Harper
 Civitan International Foundation
 College of Central Florida
 Community Foundation for Ocala/Marion County, Inc.
 Cox Communications
 D. Palmer Fund
 Harper Family Charitable Fund
 Jennifer Teitelbaum
 Katherine Bryant-House

Louise M. Werner
 Mulberry Grove Animal Hospital, Inc.
 Peter and Penny Villella Family Fund
 Rebecca & James Schatt
 Regions Bank
 Reilly Arts Center
 Robert & Mary Landt
 The Musikantow Foundation
 Vicki Listebarger
 Women of the World
 First Congregational United Church of Christ

MIAMI \$150,000 - \$249,999

Leslie L. Alexander Foundation Inc.
\$25,000 - \$49,999
 Andrus Healy
 The Batchelor Foundation, Inc.
 The Healy Foundation
 The Miami Foundation for a Greater Miami
 Wilmington Trust
\$10,000 - \$24,999
 Cindy and Irving Lerner
 JP Morgan Chase
 The PNC Financial Services Group
\$5,000 - \$9,999
 Barbara L. Black, P.A.
 Bilzin Sumberg Baena Price & Axelrod LLP
 Bullet Print USA
 Doma Title Insurance
 Health Foundation of South Florida
 Illy Caffè

Mightycause Foundation
 Robert and Stacey Crapsey
 Rosa Carbonell
 Simkins Family Foundation
 Trivest Partners
\$1,000 - \$4,999
 Andres and Paula Lopez
 Anonymous
 Anonymous
 Antonio Molina
 BankUnited
 Beatriz Terry
 Elsy Bello Gomez
 Fire Capital Impact Fund
 First Horizon Foundation
 Greater Horizons
 Isis Carbajal de Garcia
 Jeff Bogart
 Jennifer Wolfe
 Kendra Scott, LLC
 Kristina Korge
 Lester and Sharon Langer
 Maggie Barreto-Tercilla and Orlando Tercilla
 Miami Beach Chamber of Commerce
 Peggy and Douglas Hudson
 Peter Montadas
 Raymond James, Inc.
 Sarah Hope DeMayo
 Susan Bonner
 Warren Whisenant
 Yvette Mathis
 Zonta Club of Miami Lakes Foundation

ORANGE \$50,000 - \$99,999

AdventHealth
 Heart of Florida United Way, Inc.
\$25,000 - \$49,999
 Disney Worldwide Services, Inc.
\$10,000 - \$24,999
 Dawn and Dawn Brown
 Verizon
\$5,000 - \$9,999
 Katherine Rosa
 National Christian Foundation Orlando
 Publix Super Markets Charities, Inc.
 StaxCares
 Suncoast Credit Union Foundation
\$1,000 - \$4,999
 ADP, LLC
 AdventHealth
 Angela Kruth
 Diana Niedermann
 Electronic Arts
 Elise MacCarroll-Wright
 Jermaine Stokes
 Juli and Rob James
 Lavon Williams
 Machell Chavez
 Maria Sanchez
 Orange County Sheriff's Office
 Orlando Health
 Orlando Magic, Ltd
 Orlando Sports Holdings LLC dba Orlando City Soccer
 Oxford
 Pulte Homes

Donors

Richard Champalbert
 Sherrie Pillat
 Simple Generosity
 Foundation
 Sivonne Davis
 Susie Carlton
 Target Corporation
 WAIT C League Tennis

PALM BEACH

\$150,000 - \$249,999

Board of County
 Commissioners
 Palm Beach County
 The Frederick A. DeLuca
 Foundation

\$50,000 - \$99,999

The Lost Tree Charitable
 Foundation, Inc.

\$10,000 - \$24,999

Carmine's
 Community Foundation
 for Palm Beach and
 Martin Counties
 Kingdom Charitable Trust
 LoveLight Fund
 Palm Beach County
 Sheriff's Office

\$5,000 - \$9,999

Cleveland Clinic
 Comcast
 Esther LaBovick
 Florida Power & Light
 Company
 Labovick Law Group
 TREECYCLE Land Clearing
 Inc

\$1,000 - \$4,999

Catherine Ali
 Christopher Hernandez
 Deborah Stewart
 Edwin S. Taylor

James Sugarman
 Javid Khan
 John DiDonato
 JPMorgan Chase
 Foundation
 Juno Counseling and
 Wellness, LLC.
 Katrina S. Lindsey
 Keely D. Gideon-Taylor
 Kelly Domnick
 Kendra Scott, LLC
 Landon Fund
 Lydia Schmidt
 Nextera Energy,
 Business Management
 Palm Beach Community
 Trust Fund

Pamela Pangas Cope
 Publix Super Markets
 Charities, Inc.
 Rachael Bonlarron
 Searcy Denney Scarola
 Barnhart & Shipley, P.A.

Sherry Thompson
 Teresa Phelan
 United Way of
 Palm Beach County
 Veyer, LLC
 Wells Fargo Philanthropic

PASCO

\$5,000 - \$9,999

Pasco County Sheriff's
 Charities, Inc.
 Publix Super Markets
 Charities, Inc.
 United Way of
 Pasco County
 Wells Fargo Foundation

\$1,000 - \$4,999

Doug Benjamin

LaPorte, Mulligan &
 Werner-Watkins, P.A.
 Mike Wells Campaign
 Account
 Pasco Education
 Foundation
 Publix 873
 Rycoln LLC
 Sheriff Pasco County
 Operating Account
 Trinity Rotary
 Charitable Foundation
 United Way SunCoast
 (of Tampa Bay)
 Uradco - WREC

\$500 - \$999

Bauer, Crider, Kenny
 & Parry
 Brian Zamorski
 Cheryl Ambrose
 Classic Crates
 Cynthia R. Miller
 David Lewis
 Floridamakes, Inc.
 Katrina Cozzi
 Marguerite Kling
 Pedro Suriel
 Raymond James Financial
 West Pasco Multiple
 Listing Service, Inc.
 West Wind Provisions, Inc.

Women's Club at
 Summertree

PINELLAS

\$150,000 - \$249,999

Schoen Family
 Charitable Fund
\$100,000 - \$149,999
 Juvenile Welfare Board
 of Pinellas County

\$25,000 - \$49,999

City of Pinellas Park
\$10,000 - \$24,999
 Pinellas Community
 Foundation
 Rays Baseball Foundation
 The Turner Construction
 Company Foundation

\$5,000 - \$9,999

Beth Dillinger
 Foundation, Inc.
 JE Dunn Construction
 Johns Hopkins Hospital
 Kay and Robert Dillinger
 N-41 Bingo
 Wells Fargo Foundation
 William and Linda Cohen

\$1,000 - \$4,999

AvidXchange, Inc.
 Bart and Jennifer Diebold
 BAYFIRST National Bank
 Beverly Frank
 BFrank Studio, LLC
 Bill Isaly
 Charlie Justice
 Christina Chwala

Denise Young
 Diane and Richard Crowl
 First Florida Management
 Services, LLLP

George Gomes
 Irene Sullivan
 Isaly Dairy Company
 Charitable Trust
 Jacob Hearn
 Janette Wilhite
 Jeffery Lynn

Joanne and Nicholas
 Dauphin
 Marion Rich

Mark Sembler
 Mary Mascaro
 Omni Commercial
 Group, Inc.
 Pinellas County
 Sheriff's Office
 Pinellas Park Chamber
 Richard Crowl
 Sandi Myers
 Sharon Morrow
 Sofarelli & Associates
 Architecture, Inc.
 Sons of the American
 Legion St. Petersburg
 Post 14
 The American Gift Fund
 The Orchid Group, Inc.
 US Trust, Bank of
 America Private Wealth
 Management
 Wendy Coughlin
 Wilhite Giving Foundation

POLK

\$150,000 - \$249,999

George Jenkins
 Foundation, Inc.
\$100,000 - \$149,999
 Publix Super Markets
 Charities, Inc.
\$50,000 - \$99,999

Anonymous

\$10,000 - \$24,999

The Campisi
 Family Foundation
\$5,000 - \$9,999
 Ashley and Nick Barnett
 Cheri and Paul Glogower
 CPS Investment Advisors
 N-41 Bingo
 Saddle Creek
 Logistics Services

Donors

Suncoast Credit Union Foundation

Tracy and Steven Achinger

\$1,000 - \$4,999

Aetna Better Health of Florida

Andrea Anderson

AvidXchange, Inc.

Bank of Central Florida

Carol and Barney Barnett Family Foundation

City of Lakeland - Housing

CPS Cares Inc.

Crews Bank & Trust

Duke Energy

Estates at Carpenters

Florida's Natural Growers Foundation

Greg and Cheryl Shell

Helene and Wayne Sanford

James Glase

James Tincher

Jennifer Thornton

Jenny Robles

Jim and Marty Dayvault

Jim and Vicky Luffman

Joe and Karen Ruthven

Kathy and Clifford Otto

Lakeland Electric

LaQuitta Ghent

Lu and John Fitzwater

Lynn Hollis

Margaret J. Hartung

Michael and Nyrka Riskin

Michael and Teresa Beckham

MidFlorida Credit Union

Nyrka and Michael Riskin

Orlando Health

Pamela and Bill Mutz

Pat and Lari Hayhoe

Payne Air Conditioning & Heating, Inc.

Roxann Bonta

Steven Forrest

Tami and Hal Akins

Watson Clinic LLP

Will Power Fitness

Trista Otto

SOUTH CAROLINA

\$10,000 - \$24,999

Aflac Charitable Fund

Central Carolina Community Foundation

TREASURE COAST

\$100,000 - \$149,999

Children's Services Council, St. Lucie County

\$25,000 - \$49,999

Asbury Automotive Group

Cleveland Clinic

United Way of St. Lucie County

\$10,000 - \$24,999

Bank of America

Freed Foundation Fund at The Community Foundation Martin

The Community Foundation

Martin - St. Lucie

Walmart

William & Helen Thomas Charitable Trust

\$5,000 - \$9,999

Amazin' Mets Foundation

Busch Family Foundation

Charities Aid Foundation of America

City of Ft. Pierce

Fort Pierce Police Department

Lorraine Schaumburg

\$1,000 - \$4,999

Amar Williams

April King

Caroline Sturgis

City Of Port St Lucie

Coca-Cola Beverages Florida

Craig Karraker

Dustin McKinney

Florida Power & Light Company

FPL Home

Geisha Pell

John's Island Community Service League

JP Morgan Chase & Co. Workplace Giving

Karla Gabay

Katherine E. Post

Keiser University

Leslie Kristof

Lisa R. Nelson

Paula Earll

Quentin B. Allen

Steven J. Rivera

Wawa Foundation

Will & Rachel Armstead

Evelt L. Simmons

VOLUSIA

\$50,000 - \$99,999

Maryam Ghyabi-White

United Way of Volusia-Flagler

\$25,000 - \$49,999

Boys & Girls Clubs Of Volusia Flagler Counties Inc

Ghyabi Consulting & Management, LLC

Terry White

\$10,000 - \$24,999

Fidelity Brokerage Services LLC

Foundation Risk Partners

The Nascar Foundation

Thomas R. Pentz

\$5,000 - \$9,999

AdventHealth

Charities Aid Foundation of America

Latitude Margaritaville

Ormond Beach Presbyterian Church

Publix Super Markets Charities, Inc.

Upchurch, Watson, White & Max Mediation Group

\$1,000 - \$4,999

Adams Cameron Foundation

Alexis Lenssen

Brown & Brown Insurance

Charlene Greer

Checkeded Flag Committee, Inc.

Claudia and Stephen Roth

Cobb & Cole, P.A.

Daytona Beach Women's Council of Realtors

Daytona State College

Domanica Foundation

Embry-Riddle

Aeronautical University

Fifth Third Bank

Ger Westfall Real Estate

Halifax Health

Ida Babazadeh

Insight Community Foundation, Inc.

Jeep Beach, Inc

Johnny Nomad Photography

Jon Hall Chevrolet

Chanfrau & Chanfrau

Lighthouse Christ Presbyterian Church

Lorna Papke Dupouy

Mara Law, PA

Mutual of Omaha

Nancy Lohman

Omar Vargas

Rotary Club of Ormond Beach, Inc.

Save The Arts Movement

Seacoast Bank

Security First Managers LLC

Sherrill Schultz State Farm

Sherry Keyes

SouthState Bank

Stephen J. Roth

Sydney Cichon

Synovus

Tomoka Property Management

VyStar Credit Union

OUR VISION

A world where all girls and young women are safe, have economic security and an opportunity to use their voice in shaping their future.

OUR MISSION

Pace provides girls and young women an opportunity for a better future through education, counseling, training, and advocacy.

OUR VALUES & GUIDING PRINCIPLES

Pace Center for Girls is built on nine core principles that guide our work:

- Honor the Female Spirit
- Focus on Strengths
- Act with Integrity and Positive Intent
- Embrace Growth and Change
- Value the Wisdom of Time
- Exhibit Courage
- Seek Excellence
- Create Partnerships
- Invest in the Future

 **pace** center for girls

