



The POWER *of* Pace

2021 IMPACT REPORT



Find the Great in Every Girl.

VISION

We envision a world where all girls and young women have POWER, in a JUST and EQUITABLE society.

MISSION

Pace provides girls and young women an opportunity for a better future through education, counseling, training and advocacy.

PHILOSOPHY

Pace values all girls and young women, believing each one deserves an opportunity to find her voice, achieve her potential and celebrate a life defined by responsibility, dignity, serenity and grace.

ON THE COVER

Jasmine R. is 12-years old and attended Pace Collier last year. She enjoys running and listening to music, and her favorite subjects are reading and math. Jasmine excelled at Pace: "I got straight A's for the first time in my life!"

Letter from the PRESIDENT & CEO

Dear Friends and Supporters,

Looking back, 2021 was a year of mixed emotions. **Being fluid, flexible, agile and patient drove us forward as we navigated numerous unique challenges.** This year's impact report reflects the progress of our efforts on two fronts: Combating a once-in-a-generation pandemic and taking action to foster racial and social equity.

The COVID-19 pandemic continued to impact our girls, their families and our communities. Our prime focus was supporting the social, emotional, behavioral and academic needs of our girls and families in a safe and supportive environment. Centers resumed providing in-person services in August of 2020 as our girls continued working toward their academic and counseling goals.

At the fall 2020 virtual All About Girls Summit, we announced our new vision statement: A world where all girls and young women have Power, in a Just and Equitable society. This vision was developed with a recognition that emphasizing the values that bind us together and adopting new values of shared power, of justice and of equity, can restore the trust that allows society to flourish.

Despite the challenges faced this year, our efforts have yielded historic growth. We announced the expansion of our Reach Program Services into South Carolina, our first efforts in that state.

This expansion, in partnership with the South Carolina State Legislature, will provide counseling and therapeutic services to girls and their families in northeastern South Carolina, furthering our goal of serving more girls in more communities across the country.

The dedication and resilience of our staff, board members, volunteers and donors helped find the great in every girl during a time that continues to challenge the health and overall well-being of our society. We are proud of the efforts of our girls, who persevered in the face of unique challenges. This year has clearly demonstrated the importance and significance of human connection and reinforced the need for us to unite in support of girls and young women with a common vision of a just and equitable society.



Mary Marx
President & CEO





Brianna

Art Entrepreneur and High School Graduate,

Broward Reach
Program Services

Brianna was having a difficult time coping with her past trauma. It was so intense that she developed a substance abuse dependency. Deflated and without any positive outlets, she ended up at Girls Court.

Once referred to Pace Center for Girls, her spirit began to ignite once again. During her intake interview, Brianna said with confidence, "I want to do better and be better," and that is exactly what she did. Through Pace's Reach Program Services, Brianna began strengthening her communication and coping skills and practicing and applying techniques to ensure her future success.

During her intake interview, Brianna said with confidence, "I want to do better and be better," and that is exactly what she did.

With encouragement, Brianna continued to develop her art expression skills and started her own art business where she takes artwork requests from various customers. She improved her school attendance, raised her grades to all A's and B's and graduated high school this past June.

Jennifer Nelson

Champion for Girls' Success,
Pace Lee Board Member and Pace Mom

Pace Lee Board of Directors member and donor Jennifer Nelson knows the impact of Pace firsthand as the mother of her very own Pace girl. "As a single mom, I too have watched helplessly as my child changed due to experiences outside of my home and control."

Jennifer started seeing changes in her daughter right before high school and what started with bullying turned into depression and bad choices. Before she knew it, her straight-A student was now bringing home poor grades.

"My daughter is an incredible young woman who grew up like many little girls with larger-than-life dreams," says Jennifer. "However, being a teenage girl in today's world is incredibly difficult. I knew I had to get her into a healthier environment, and Pace seemed like the right choice."

I knew I had to get her into
a healthier environment,
and Pace seemed like the
right choice.

With hard work and determination, her teenage daughter has propelled her life forward. Today she's on track to graduate from Pace Lee and will start college courses at Florida SouthWestern State College.

"As a proud mom, I watched Pace restore my daughter's confidence and desire to succeed," says Jennifer. "As a proud board member, I continue to witness other Pace girls take back control and thrive. That's why funding these programs is so important."





From day one as a student,
I knew I would be safe here...
I want the Pace girls to know
that they can talk, ask questions
and find their strengths too.

Destony

Once a Pace Girl, Always a Pace Girl Comes Full Circle

Pace Clay Team Member
and Pace Alumna

Having a girl successfully transition from Pace, get training, join the workforce and come back to touch the lives of future girls is a living testament to the long-term impact of our program.

Destony is hardworking, kind and endlessly resourceful. At just 19 years old, Destony is a certified EMT and CNA. While at Pace Clay, Destony was President of our Girls' Leadership Council, completed the Pace Clay College Girl Bootcamp at St. Johns River State College and graduated from high school at 16 years old. Destony went on to excel at St. Johns River State College and became the first Pace Clay alumna to graduate from a college-level program since the Center opened in 2016.

"For me Pace has always meant reassurance. From day one as a student, I knew I would be safe here and I gradually came out of the shell that I had depended on for protection and found my voice. I want the Pace girls to know that they can talk, ask questions and find their strengths too," Destony says.

Destony has her eyes on her future, stating, "I have always worked and gone to school. It helps me to focus and budget (and stay out of trouble). I am interested in earning an additional certification for ultrasound technology, but it has always been my dream to drive a dump truck. Working at Pace, I feel like the sky is the limit. I can't wait to see where this journey takes me."

Letter from the CHIEF OPERATING OFFICER

Dear Friends and Supporters,

Although not without its struggles, this past year has provided many opportunities for us to take stock of the importance of human connection. As we began to implement the complex process of returning to in-person learning and support services, we were also grappling with the countless instances of racial and social injustice that continue to plague our society. Our new vision statement, "A world where all girls and young women have Power, in a Just and Equitable Society," drove our mindset and centered our focus.

In June 2021, we released a research paper titled: "Building Equitable Evidence of Social Impact," which sought to link life outcomes with participatory measurement, such as surveys, focus groups and town halls. This research was conducted via focus groups and interviews, which ultimately highlighted the importance of blending participatory research measures with empirical measures to build evidence of program impact and create organizational and cultural benefits. Aligning our vision statement with this work reinforces our pursuit of how this world must look and why our girls are at the center of everything we do.

Our staff cannot care for our girls unless we care for them first. Facing new and unique challenges, our objective was to continue to recruit, train and retain the best talent possible so our girls can grow and learn from the best.

Our focus on health and wellness represents an investment in our staff that goes beyond their time at work, and we listened to our staff to tailor and grow our benefits package to meet their needs this past year.

The resilience of our girls and staff inspires us to continue the fight forward for our girls and for racial and social equity in all areas of our society. When faced with some of the biggest obstacles imaginable, we have risen to meet the challenges and will continue advocating for all in the movement to guide girls and young women down the path toward success.

Yessica Cancel

Yessica Cancel
Chief Operating Officer



CENTER Day Program

Pace's center-based day program provides year-round education, counseling and life skills training to offer a comprehensive and individualized experience for success for middle and high school-age girls.



21

Communities
and growing



BEFORE PACE

78% Were failing one or more classes prior to attending Pace

18% Had prior involvement with the juvenile justice system

58% Had been suspended or expelled

AFTER PACE

90% Improved academically at Pace

91% Had no involvement with the juvenile justice system one year after completing Pace

73% Were in school, higher education, or employed one year after completing Pace

ACROSS OUR PROGRAMS, PACE SERVED →

REACH

Program Services

Pace Reach Program Services is a therapeutic and counseling program offering social, emotional, behavioral health and support services for girls ages 11–17 and their families. Reach therapists travel to girls to provide services in their home, school or community, and also meet with girls online.



16

Communities
and growing



BEFORE PACE

29%

Had prior involvement
with the juvenile justice system

81%

Had behavioral
challenges associated
with delinquency

AFTER PACE

95%

Had no involvement with
the juvenile justice system one
year after completing Pace

99%

Had improved behavior
associated with delinquency
after Pace



3,000+

Girls each year



40,000+

Girls since 1985

THE GIRLS COORDINATING COUNCIL MODEL

Girls Deserve to be Understood in How They Learn and Experience the World

Since 2017, Girls Coordinating Councils (GCC) have been formed in various counties throughout Florida and Georgia. The Girls Coordinating Council is a community collaborative focusing on reforming and strengthening the system of care for girls and increasing the availability of gender-responsive, trauma-informed and strength-based services for girls.

This community collaborative effort brings together community stakeholders to identify and address specific issues affecting girls to influence the policies and practices that impact the well-being of girls. GCC also seeks to strengthen and promote community norms to ensure girls are socially, emotionally and physically healthy, educated and socio-economically stable.

We have active GCC programs in Palm Beach and Broward counties in Florida and in Macon and Peach counties in Georgia, and this model is being adopted in many communities as we expand outside of Florida, aligning with our goal of impacting more girls through innovation, continuous improvement and social impact.



Palm Beach

Involving Girls in the Process

To promote girls' participation in the Council, we created a Girls Voice Taskforce, a subcommittee of the GCC. The girls were selected through an application process. They met monthly and workshopped different topics like leadership development. Members of the GCC supported the work as Advisors. A virtual platform connected the girls and Advisors through this process.



Sarah

Connected through Community Partners

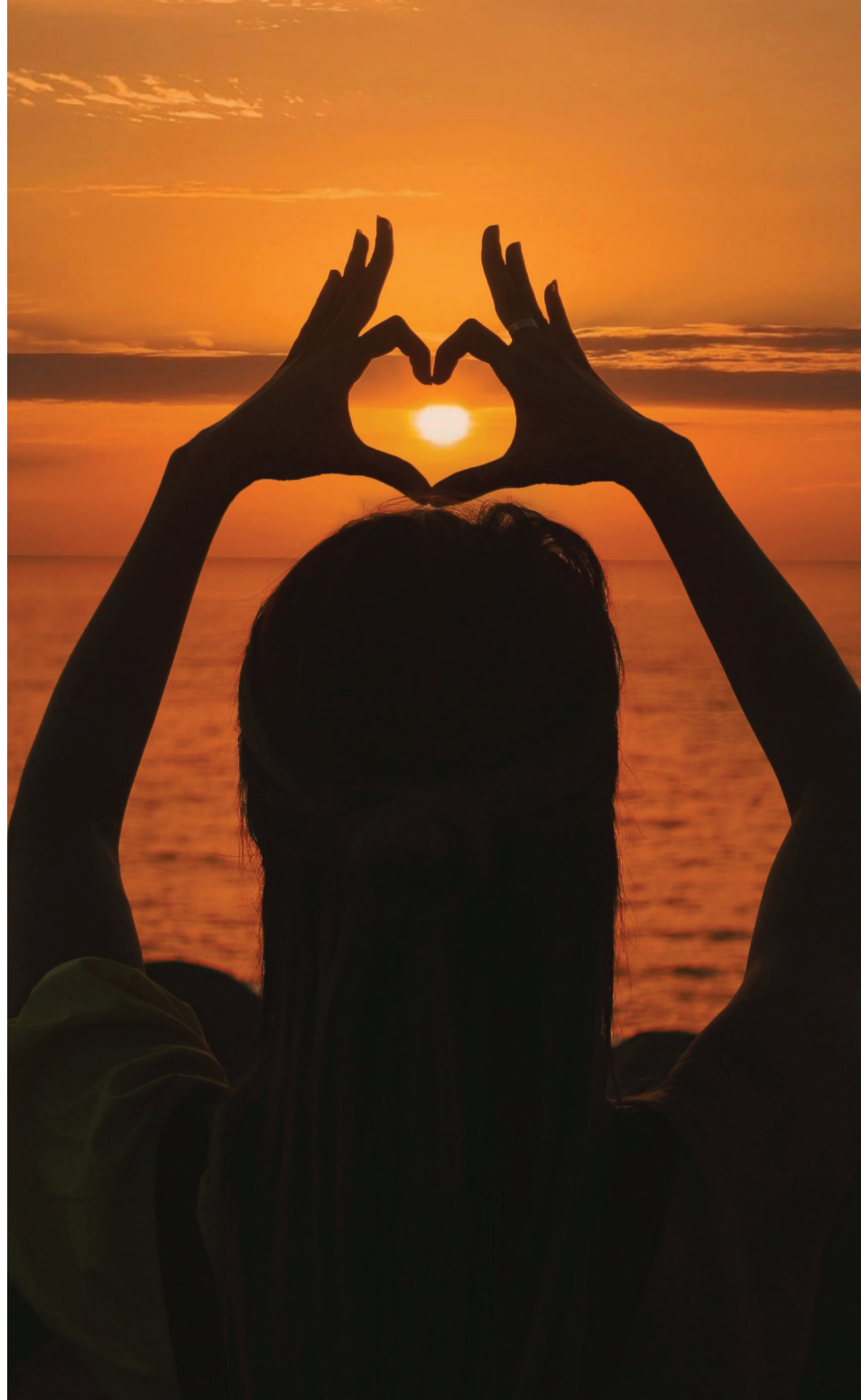
Sarah was referred to Pace Reach by Macon's domestic violence shelter. Sarah's family fled their home in March and spent most of 2020 at the shelter. Her mom works at a hardware store nearby.

Sarah is a fierce protector of her family and considers herself a natural-born leader. She can think fast, and is solutions-focused and action-oriented. These leadership qualities have caused her to clash with authority figures when they do not see eye to eye. Her behavior also made it difficult to make friends and establish relationships with her peers and teachers.

During her time in Reach, Sarah has learned about her own personal communication style, and how she shows and receives love with friends and family. Sarah recognized that her protective instinct and 'let's do it my way' mentality stems from watching her family struggle with poverty for several years, the absence of a father figure and witnessing her mother being hurt by her abuser.

"Pace has caused me to think a little deeper about what I'm thinking and why I'm thinking it. It's hard, but I like it," Sarah says.

Name and details have been adjusted in this story for anonymity.



Pace has caused me to think a little deeper about what I'm thinking and why I'm thinking it. It's hard, but I like it.

Partnership with State Farm Foundation STRENGTHENS OUR COMMUNITY

One of Pace's nine values and guiding principles is Create Partnerships. Pace's partnership with The State Farm Companies Foundation created opportunities to empower our girls and provide support to some of our communities' most vulnerable citizens. Through an \$85,000 grant, Pace worked with State Farm to design a statewide service-learning initiative which promoted leadership development, service and support of seniors in each of the communities Pace serves.

Pace girls, staff, State Farm agents and other community partners came together at each of our 21 Pace Centers, providing supplies, encouragement and leadership to create more than 2,300 care packages for seniors delivered in all our Pace communities in Florida.



“

It felt good creating the COVID Care Packages. It shows our elders that there are kids out there who care for and respect them. We put things in there like compression socks, crossword puzzles and snacks that we thought they might like instead of what we might like. I just hope they like them.”

– **HARMONY, AGE 15**
PACE ALACHUA

“

I just wanted to take a minute and let you know how much I appreciate the bag of goodies that you brought today and I for one am so glad that people out there are thinking about us in a time like this. Since Covid hit, we've been on lockdown, which is harder on some of us more than others, but it's hard not being able to see friends and loved ones. Some of us have no family or friends in the area, so when we get gifts like this it shows me that someone out there still cares about us in here. So again, I just wanted to say Thank You very much from me and the others here at the nursing home.”

– **CARE PACKAGE RECIPIENT BROWARD COUNTY**

Pace Releases White Paper as Springboard for **VISION STATEMENT** *and* **THOUGHT LEADERSHIP**

Pace, in collaboration with Millway Plus, published **Building Equitable Evidence of Social Impact**, which explores how nonprofit organizations benefit from embracing participatory measures.

The white paper advocates that nonprofits, evaluators and funders serious about building equity must ensure that constituents are true participants in evaluating impact.

In partnership with Fund for Shared Insight, Feedback Labs and Project Evident, the study draws on the experience of 15 nonprofits, including Pace, that engage participants as partners in evaluation and reveals the benefits of this approach, especially in building more inclusive organizations and cultures.

With the publication of this paper, Pace generated multiple articles and publications supporting feedback. Participatory feedback will continue to be an area of focus in 2022 as we continue to lead by elevating the voices of girls and young women.

01. THE CHRONICLE OF PHILANTHROPY

EQUITABLE EVALUATIONS

When Participants Partake in Evaluations, Equity Is Advanced in Surprising Ways

By Yessica Cancel, Lymari Benitez, Mary Marx, and Katie Smith Millway

JUNE 28, 2021



During the pandemic, Pace Center for Girls provided internet-enabled tablets and laptops to 2,000 girls to provide services and solicit their feedback.

When participants partake in evaluations, equity is advanced in surprising ways

The Chronicle of Philanthropy

02. FEEDBACK LABS

PACE CENTER FOR GIRLS – WHY IS LISTENING, REFLECTING AND ACTING ON FEEDBACK MISSION CRITICAL?



Lymari Benitez, Ph.D, Pace Center for Girls | June 25, 2021

At Pace Center for Girls, we understand that, for girls to change their lives, they and their families must have a voice in shaping their present and futures.

This is why during the past 35 years, we have elevated the voices of more than 40,000 girls. Providing year-round academic and social services through a gender-responsive, trauma-informed, and strength-based lens, Pace has used feedback to change the life trajectories of girls who are likely to have experienced risk factors associated with delinquency and adverse childhood experiences.

Pace Center for Girls – Why is listening, reflecting and acting on feedback mission critical?

Feedback Labs

03. Charity Navigator blog

The team from Charity Navigator, the nation's largest independent charity evaluator and leading donor advocate, shares their thoughts on emerging nonprofit-sector issues and offers tips to better inform your intelligent giving decisions.

Monday, June 14, 2021

Constituent Feedback: Pace Center for Girls - Why is listening, reflecting and acting on feedback mission critical?



At Charity Navigator, we recognize the importance of Constituent Feedback, a practice whereby a nonprofit collects feedback from its beneficiaries and then utilizes what it learns in its decision-making process. In February 2021, we shared in a co-authored blog post, our intent to showcase nonprofits and their constituent feedback practices within their Charity Navigator profiles.

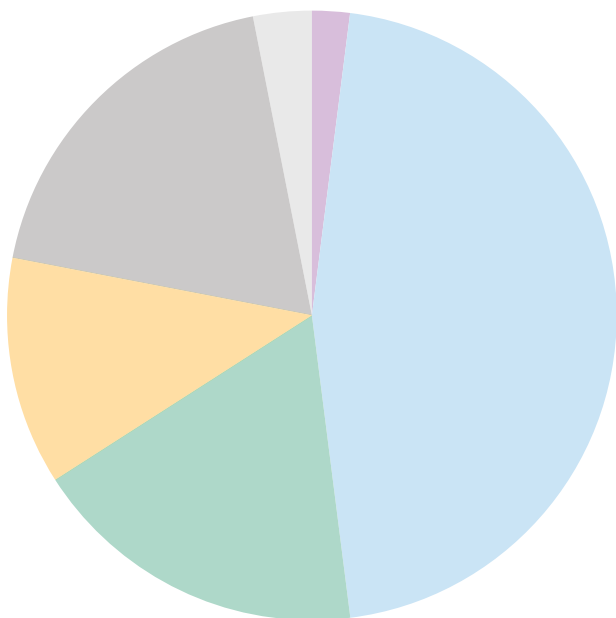
Today, we are pleased to feature one such organization – Pace Center for Girls Inc., an Encompass rated organization with an overall 100 out of 100 score, which includes a perfect score of 100 within the Culture & Community beacon where Constituent Feedback resides.

At Pace Center for Girls, we understand that, for girls to change their lives, they and

Pace Center for Girls – Why is listening, reflecting and acting on feedback mission critical?

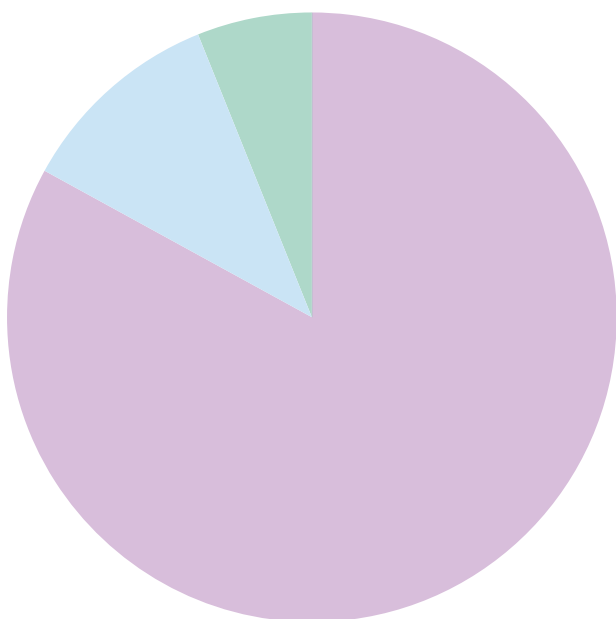
Charity Navigator:
Constituent Feedback

2021 Financials



REVENUE **\$50.1M**

<div></div> Federal Grants	2%
<div></div> Department of Juvenile Justice — Florida	46%
<div></div> School Board	18%
<div></div> Grants	12%
<div></div> Contributions and In-Kind	19%
<div></div> Other	3%



EXPENSES **\$45.2M**

<div></div> Program	83%
<div></div> Management & General	11%
<div></div> Fundraising	6%

Letter from the CHIEF BUSINESS OFFICER

Dear Friends and Supporters,

In a year fraught with uncertainty and instability around the world, we saw the needs of girls intensify. **The services we provide became a lifeline for many girls who saw COVID-19 exacerbate family instability, economic vulnerability and mental health needs.** Reinforcing and expanding our operations is and has always been a top priority to sustain our growth and provide every girl the opportunity to succeed.

Despite global challenges, we rose to historic heights and continued to provide the best possible services and care. Our revenue increased to the highest levels in our history while ensuring 83% of funding went directly to our program and our girls. We converted to a new comprehensive financial management system to handle additional growth and foster innovative approaches across the organization. The Information Technology team transitioned our services to virtual platforms, ensuring all girls and staff had stable and reliable access to technology and internet service while simultaneously increasing the level of security needed to protect confidential data. We also took steps to enhance our accountability to our public funders and developed new systems to track program performance.

Strengthening our core is critical to ensuring we have a stable foundation to grow in new communities and serve more girls. This growth is centered around our vision of a world where all girls and young women have Power, in a Just and Equitable society.

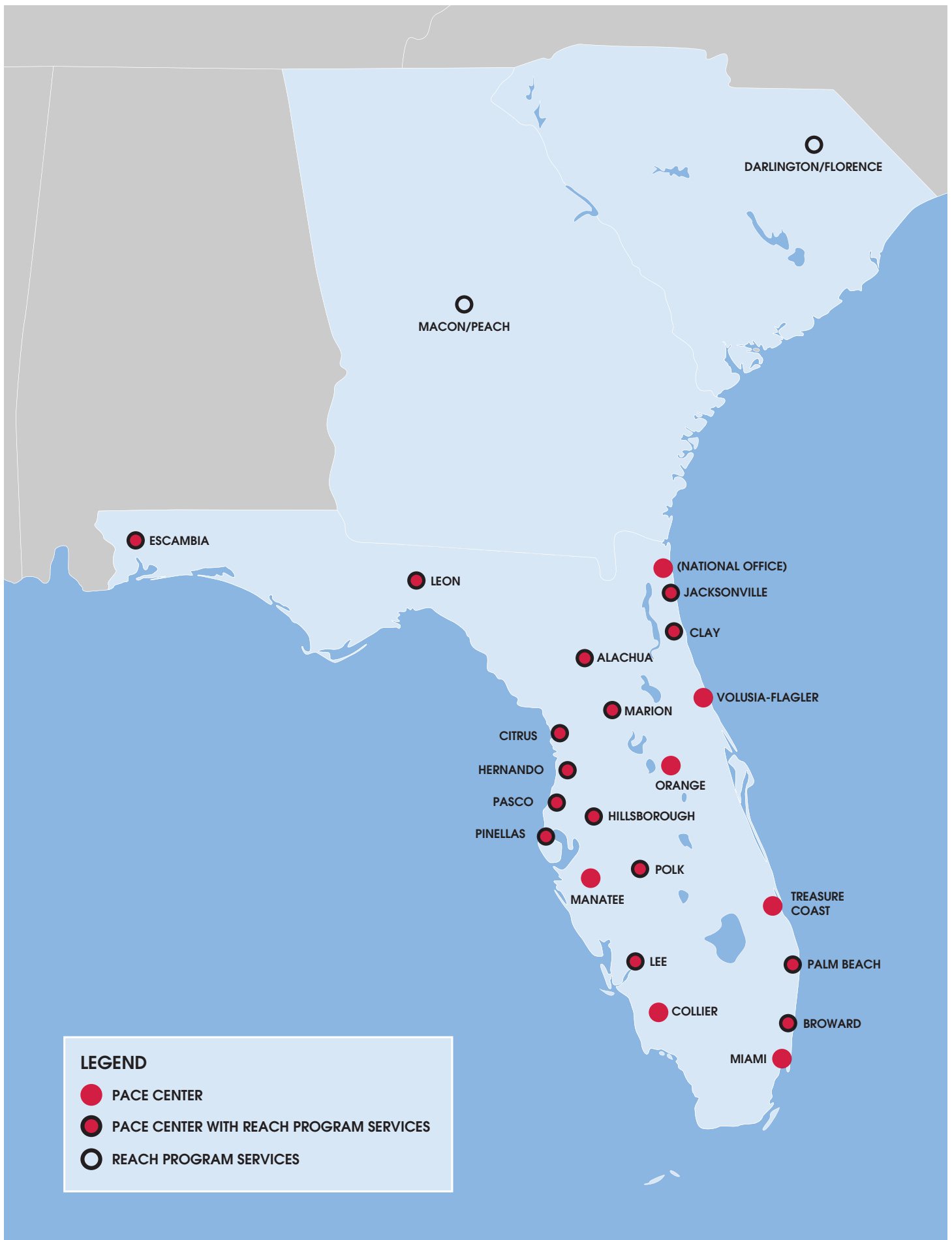
Our focus on this vision is unwavering, as we seek to provide every girl an opportunity to find her voice. The collective future of our society greatly depends on the contribution of young women. We must ensure that equal opportunity is provided to all so that girls can be lifted up and encouraged to use their voices to fight for their beliefs.

This work must be grounded in love. And it must reflect a true belief in what our society can become if this vision is achieved. There is no shortage of potential in our girls who will be the next generation of leaders. Join us in the movement to empower these important voices and seek justice, power and equity in our society.



Thresa Giles
Chief Business Officer





COMMUNITY LOCATIONS *and* CONTACTS

NATIONAL OFFICE

Mary Marx

President & CEO

Pace Center for Girls, Inc.
5745 Phillips Industrial Blvd.
Jacksonville, FL 32256

ALACHUA

Natalya Bannister

Executive Director

Pace Center for Girls, Alachua
1010 SE 4th Ave.
Gainesville, FL 32601

BROWARD

Sara Nuñez

Executive Director

Pace Center for Girls, Broward
2225 N. Andrews Ave.
Wilton Manors, FL 33311

CITRUS

Carole Savage

Executive Director

Pace Center for Girls, Citrus
3630 W. Educational Path
Lecanto, FL 34461

CLAY

Cristina Helbling

Executive Director

Pace Center for Girls, Clay
429 College Drive
Orange Park, FL 32068

COLLER at Immokalee

Marianne Kearns

Executive Director

Pace Center for Girls,
Collier at Immokalee
160 N. 1st St.
Immokalee, FL 34142

ESCAMBIA-SANTA ROSA

Laurie Rodgers

Executive Director

Pace Center for Girls,
Escambia-Santa Rosa
1028 Underwood Ave.
Pensacola, FL 32504

HERNANDO

Kelsi Ramdeo

Executive Director

Pace Center for Girls, Hernando
3139 Dumont Ave.
Spring Hill, FL 34609

HILLSBOROUGH

Davia Lerebours

Executive Director

Pace Center for Girls, Hillsborough
1933 E. Hillsborough Ave., Suite 300
Tampa, FL 33610

JACKSONVILLE

Kimberly Reed

Executive Director

Pace Center for Girls, Jacksonville
2933 University Blvd. N.
Jacksonville, FL 32211

LEE

Jennifer Cellitti

Executive Director

Pace Center for Girls, Lee
3800 Evans Ave.
Ft. Myers, FL 33901

LEON

Cheval Breggins

Executive Director

Pace Center for Girls, Leon
311 E. Jennings St.
Tallahassee, FL 32301

MACON

Laurie Rodgers

Executive Director

Pace Center for Girls, Macon
401 Monroe St., Suite D1
Macon, Georgia 31201

MANATEE

Amy C. Wick Mavis

Executive Director

Pace Center for Girls, Manatee
3508 26th St. W.
Bradenton, FL 34205

MARION

Carole Savage

Executive Director

Pace Center for Girls, Marion
328 NE 1st Ave., Suite 500
Ocala, FL 34470

MIAMI

Sherry Thompson Giordano

Executive Director

Pace Center for Girls, Miami
1400 NW 36th St., Suite 200
Miami, FL 33142

ORANGE

Rosene Johnson

Executive Director

Pace Center for Girls, Orange
445 N. Wymore Rd.
Winter Park, FL 32789

PALM BEACH

Sara Nuñez

Executive Director

Pace Center for Girls, Palm Beach
1640 S. Congress Ave.
Palm Springs, FL 33461

PASCO

Ellen Katzman

Executive Director

Pace Center for Girls, Pasco
7545 Little Road
New Port Richey, FL 34654

PINELLAS

Chantelle Miles

Executive Director

Pace Center for Girls, Pinellas
4000 Gateway Center Blvd. N., Suite 400
Pinellas Park, FL 33782

POLK

Ellen Katzman

Executive Director

Pace Center for Girls, Polk
213 Tyler Ave.
Lakeland, FL 33801

TREASURE COAST

Maygan Johnson

Executive Director

Pace Center for Girls, Treasure Coast
3651 Virginia Ave.
Ft. Pierce, FL 34981

VOLUSIA-FLAGLER

Sheila Jordan

Executive Director

Pace Center for Girls, Volusia-Flagler
208 Central Ave.
Ormond Beach, FL 32174



Letter from the CHIEF ADVANCEMENT OFFICER

Dear Friends and Supporters,

When we realize that each one of us has the power to create meaningful and lasting change, we can wake up every day filled with confidence and courage to rise and meet whatever challenges we might face. Over the past year, it felt like every day brought our communities and our world new and different challenges, and Pace was no different. Facing an increased demand for services, our focus needed to be on sustaining and growing the resources necessary to meet our girls' evolving needs. **We sought to create deeper connections with our existing donor base while continuing to expand our reach to engage new donors and supporters.** I am proud to say, due to advocates and supporters like you, we have more than doubled our online giving, broadened our audience and created meaningful, new relationships with donors committed to finding the great in every girl.

The importance of strengthening our base to encourage sustainable growth helps us work toward our vision of a world where all girls and young women have Power, in a Just and Equitable society. This bold statement recognizes that our girls deserve a world where they can begin each day with the courage and confidence to stand up and use their voices. Girls like Hazel, who was plagued by peer pressure, facing suspensions and worried she wouldn't graduate high school. At Pace, she found her footing. Now, she uses her voice to help others by serving on the Girls Leadership Council. With her improved grades and outlook, she plans to harness the power of her voice and her skills to become a pediatrician.

Our vision statement focuses our attention on developing the next generation of empowered women.

This past year, our girls joined together to design and implement a service-learning project in partnership with State Farm. Girls from all 21 Centers assembled and delivered more than 2,300 care packages to seniors; coming together as one Pace in the service of others demonstrates our commitment to this vision and builds the society our girls deserve.

To achieve our vision of a just and equitable society, we must take time to truly listen and learn from one another and stand up for what is right and what is fair for our girls. As we look toward the next year, our resolve must stay strong, our focus must stay true to our mission and our girls must stay at the center of everything we do.

Teddy Thompson
Chief Advancement Officer

BOARD *of* TRUSTEES



Gordon Bailey, Chair

Vice President, Public Affairs
and Community Engagement,
Florida Blue

Mark Barnes, Treasurer

Partner, DiBartolomeo, McBee,
Hartley & Barnes

Brittany Perkins Castillo, Vice Chair

Chief Executive Officer, AshBritt Environmental

Billie Rawot, Immediate Past Chair

Senior Vice President & Controller,
Eaton Corporation ret.

Greg Haile, Secretary

President, Broward College

Crystal Freed

Office of the State Attorney, 4th Circuit

Denise Cobb

Founding Trustee, Naples Children
& Education Foundation

Catherine Jefferson

Vice President, HR Business Partnerships
at Cox Media Group

Karen Gallagher

Owner, The L.E.A.D. Group

Derek Koger

Executive Director of Tribal Community
Development, Seminole Tribe of Florida

Marva Johnson

Group Vice President, State Government Affairs,
Charter Communications South Region

Kerrie Slattery

Chief Development Officer,
Feeding Northeast Florida

Karen O'Bryne

Chief Financial Officer, Motus

Debbie Toler

Vice President Business Development, Jack
Morton Worldwide ret., C2 Creative ret.

Sandy Stilwell Youngquist

Chief Executive Officer & Owner,
Stilwell Enterprises & Restaurant

Michael Mitchell

Senior Vice President of
Government Affairs, Comcast

Justice Peggy A. Quince

Former Chief Justice of the
Florida Supreme Court

Madeline Pumariega

President, Miami Dade College

DONORS

We greatly appreciate each gift given in support of Pace, and we have made every effort to ensure the accuracy of this listing. We regret any errors.

*Giving Society **Includes in-kind donations

NATIONAL OFFICE

\$250,000 - 999,999

Deerbrook Charitable Trust
Fidelity Foundation
Tides Foundation

\$100,000 - 149,999

Cigna Foundation
Michael Ward and Jennifer
Glock Foundation

\$50,000 - 99,999

Anonymous
Fondation CHANEL
Simply Healthcare
Foundation
State Farm Insurance
Truist Foundation

\$25,000 - 49,999

AT&T
Bank of America
Charitable Foundation,
Inc.
Fund for Shared Insight
The Krystal Company
Toler Family Foundation

\$10,000 - 24,999

Billie & John Rawot
Charter Communications
Circle of Friends
Foundation/Mark &
Joanne Snead
Florida Blue Foundation
Winston Family Fund

\$5,000 - 9,999

Anna Maria Oyster Bar
Gray-Robinson, Attorneys
at Law
Mary Marx & Michael Fitch
The Bailey Group
U.S. Bank Foundation
Ultimate Kronos Group
United HealthCare
Services, Inc.

\$1,000 - 4,999

Arthur Dobosiewicz
Enterprise Holdings
Foundation
Equity Interests, LLC
Info Tech Inc.
John Lee Eichman &
Jaque Karnowski-Eichman
Charitable Fund
Ponte Vedra Beach Rotary
Foundation, Inc.
Prosperity Home
Mortgage, LLC

Renaissance Charitable
Foundation Inc.
Robin & Dan Wahby
Sherrill & James Ragans
State of Florida Treasury
Teddy Thompson
Triune Technologies Inc.
Vanasse Hangen Brustlin,
Inc.
Wells Fargo Clearing
Services, LLC
Yessica Cancel

\$500 - 999

Ann Smith
Crowe Foundation
Dr. & Mrs. John Ackermann
Ellen & Gary Parker
Gayle Richard
James & Joan Snediker
Karen Gallagher
Robert Wood Johnson
Foundation
Sarah Williams
Thresa C. Giles

ALACHUA

\$50,000 - 99,999

Children's Trust of Alachua
County
Vanguard Charitable

\$25,000 - 49,999

Alachua County Board of
County Commissioners
Anonymous*
Anonymous
Give Gab
Merrill Lynch, Pierce,
Fenner & Smith, Inc.
Truist Charitable
Foundation
United Way of North
Central Florida

\$10,000 - 24,999

Carissa & Richard Blaser*
Pure Aesthetics, LLC

\$5,000 - 9,999

Bill & Celia Burger*
Bridget Fleming
CDS Family & Behavioral
Health Services, Inc.
Cox Communications
Jack Martin
John & Kathy Kish Family
Charitable Fund*
Kathleen & Frederick
Southwick*
Mary Sanford*
McDonald's

Mr. Lawrence Sprague
Churchill
Portia Taylor*
Publix Super Markets
Charities, Inc.*
Ramona Chance
Robert & Ruthanne Curry*
The Village Jeweler
Vanguard
Wanda & Steve Tuttle*
Weyerhaeuser Foundation

\$1,000 - 4,999

Alavi & Pozzuto, P.A.*
Amy Murad
Andrea Lister*
Angela Jacobs*
Ann Marie Rogers*
Anna Murillo*
Anna Olcese
Aubrey Hall
Beth Davis
Bill & Carole Zegel*
Bryce A Burger Landscape,
LLC
Buzz & Anne Boyd
Capital City Bank
Celebrate Primary Care
Chacon, Diaz and
DiVirgilio
Christine Riggs*
Claudia Wilson*
Community Foundation of
North Central Florida
Dawn Johnson*
Dawn Kraft*
Diane Bacus*
Dr. Naima Brown
Emily & Phillip Pritchett*
F. Kayser Enneking and
Mark Scarborough*
Faun Carlson*
Gainesville Charitable
Foundation, Inc.
Gaskin Contractors
Landscape Division LLC
Gloria Watkins
Heather & Kelley Jones*
Invoke Construction, LLC
Irma Alvarez
Jack & Dorene Ross*
James & Lee Salter*
James & Leslie Nilon*
JC & Jessie Seacrest Family
Foundation
Joanne & David Kremer*
Kail Partners, LLC
Kathryn Clarke
Kinetix Physical Therapy PA
Koss, Olinger and

Company, LLC
Leonardo's Pizza
Linda Abeles
Lowry Financial Advisors
Ludivine Kail*
Lynda Bowie-Locklear
Mailande Becker Holland*
Mary Ann & Chip Williams*
Mary K. Wimsett*
Mary Trew
McFall Builders, Inc.
Mike & Jane Ryals Family
Fund
Mowitz Law, LLC
Nancy Perry
Nancy Scheaffer
Nicole Mullally*
North Florida Regional
Medical Center
North Florida Woman's
Physicians of Gainesville,
LLC
Oaks Jewelry
Pamphalon Foundation,
Inc.
Prince Medical, Inc
Quality Design Works, Inc.
Quality Plumbing, Inc.
Richard & Michelle Ropp
Richard W. Oliver, Jr., DMD
PA
Rod & DeeDee Smith*
Sandra Kramer
Sandra Olinger*
Sarkis Family Psychiatry
and Clinical Trials
SharpSpring
SkyFrog Landscape
Smart Stone Countertops
Stephanie Frank
Studio 32 Orthodontics
Tania Alavi
Taste of Greater
Gainesville, Inc.
The Christine W. Riggs Trust
The Florida Lottery
The Gladys C. Cofrin and
Daniel Logan Fund
Tina Vairo*
Tracy and Bryce Burger*
UBS Financial Services
University of Florida
Vanasia Bradley
Vanessa Fernandez
Wal Mart Stores, Inc.
Yajaira Krop

\$500 - 999
Aimee Green
Alesha Busch

Allen & Wilson, CPAs
Amanda Fuller
Brandt Frenchman
Brian Watson
Buffa Blanchet
Capitol Environmental
Services Inc.
Carlton Davis and Pauline
Lawrence
Chad Welch
Coldwell Banker MM
Parrish Realtors
Daintry Cleary
David & Martha Rader
Deborah V. Bowie
DeConna Ice Cream
Dorene & Scott Webster
Dr. Amarene Chandler
Erica Johnson
Folds, Walker & Maltby,
LLC, Attorneys at Law
FrontStream Panorama
Workplace
George Thomas
Glassman & Zissimopoulos
PLLC
Herbert E. Jones
Herrington Ventures LLC
Holden, Carpenter,
Roscow and Kurdziel
James Di Virgilio
Jamie Vascotto
Jessica Norfleet
Joel McCoy
Kelley D. Jones, PA
Kelly & Matthew Gurka*
Kristine Lier
Laura Cabrera
Lauren Douglass*
Lisa Brown
McLeod General Trades,
LLC
Meldon Law
Melissa Cere*
Neil Buchanan
Nick Sutherland
Oak Hammock at the
University of Florida
One Source Accounting
LLC
Pat Hagen
Patricia Toskes
Paula Crowley
Peggy and John
Kirkpatrick
Perry & Yadiria McDonald
Charitable Fund
Progressive Black Men, Inc
Rev. Steve and Rev.
Catherine Price*
Rich Chang

Richard Pomeroy
Susan & Paul Robell
Salter & Feiber Attorneys
At Law
Scott Lagasse
Scott Stricklin
Shannon Miller
Shannon Wells
Sheyna Carroccio
Stacy Scott
Suzanne Gaintner
Tara Edelstein
The Blackbaud Giving
Fund by its agent,
YourCause
Tish Olesky
Trinity United Methodist
Church
Yesi & Alexander Sevilla
Yvette Godet

BROWARD

\$250,000 - 999,999

Children's Services Council
of Broward*

\$100,000 - 149,999

Mary N. Porter Community
Impact Fund*

\$50,000 - 99,999

Gore Family Memorial
Foundation Trust*
John Ulbrich Charitable
Trust*
Ultimate Kronos Group**/

\$25,000 - 49,999

Broward College*
Leo Goodwin Foundation,
Inc.*
Paul Palank Memorial
Foundation, Inc.*
Regions Bank Foundation*
Rick Case Automotive
Group*
Sam Berman Charitable
Foundation Inc.*
Sheila Bechert*
United Way of Broward
County*

\$10,000 - 24,999

4 Girls Foundation, Inc.*
Annette Van Howe
Women's Fund of the
Community Foundation
of Broward*
Anonymous*
Appleseeds Foundation
Fund*
Bank of America
Charitable Foundation,
Inc.*
Broward Sheriff's Office
(BSO)*
Circle of Friends
Foundation/Mark &
Joanne Snead*
Citrix*
Kiwanis Club of Fort
Lauderdale Charitable Fund*

Menendez/Corban
Fund of the Community
Foundation of Broward*
Rosemary Duffy
Larson Trust*
Tate Family Foundation
Fund of the Community
Foundation of Broward*
The Janoura Group, Inc.*
The Jones Family
Foundation*
The William R. Watts
Foundation, Inc.*
UPS*

\$5,000 - 9,999

Allison & Andy Cagnetta*
Cathy & James Donnelly
Family Fund*
Christine & Andrew
Gumberg*
Jennifer Uustal*
Karen & Joe O'Byrne*
Lynda Napolitano*
Memorial Healthcare
System*
Michael Humphrey*
ML40-FLL*
Modernizing Medicine*
Nikki & Timothy Ermatinger*
Penelope Blair*
Publix Super Markets
Charities, Inc.*
Ryder System Charitable
Foundation, Inc.*
Sadaka Family Charitable
Fund*
South State Bank*
Susan & Jack Loving*
The Lozick Family
Foundation*
TriSpark Media Group, Inc*
Walgreens*

\$1,000 - 4,999

Aggie Pappas*
Allison Brimmer-McKenzie
& Kandis McKenzie-
Brimmer*
Ally Kayton*
Bochak Family Children's
Fund*
BrandsMart USA*
Carman Law Firm, P.A.*
Carosella Family
Foundation*
Centennial Bank*
Chae & Greg Haile*
Charities Aid Foundation
of America*
Childrens Aid Club*
City of Wilton Manors/
Wilton Manors PD*
Denia Perloff*
Ferrari Club of America -
Broward Chapter*
Fiona & Hon. Kal Evans*
Fonda & H. Wayne
Huizenga, Jr. Family Trust
Fund of the Community
Foundation of Broward*
Fort Lauderdale Alumnae
Panhellenic*

Gina Conti*
Harry T. Mangurian, Jr.
Foundation, Inc.*
Hon. Giuseppina Miranda*
Jamie Finizio Bascombe &
Timothy Bascombe*
Jane Wexton & Marvin
Pickholz*
Jené Kapela*
Jo Ann Hoffman*
Kathleen Thomsen*
Kristin & Richard Coker*
Legacy Wealth
Management*
Linda & Hon. Bill Haury*
Lou & May Jean Wolff
Family Foundation Fund
of the Community
Foundation of Broward*
Mark & Carol Zimmel
Fund for the Human/
Animal Connection of the
Community Foundation of
Broward*
Mary-Jane Graff*
Meike & Dominick Miniaci*
Michael Simmons*
Miller Construction
Company*
Mombach, Boyle, Hardin &
Simmons P.A.*
Regions Bank*
Roxana Borges*
Sandra & Peter Nori*
Seiler, Sautter, Zaden,
Rimes & Wahlbrink*
Setnor Byer Bogdanoff, Inc.*
Shutts & Bowen, LLP*
Sonali & Chris Garvin*
Soroptimist International
of Davie*
Stacy Schwartz*
Steven Glassman
Campaign*
Sunem Beaton-Garcia &
Carlos Garcia*
Susan & Joel Martin*
Suzette Bravo*
Suzie Horovitz Maurer &
Laurence Maurer*
The Elgidely Family*
The Hartford*
The Jonathan S. and
Patricia G. England
Foundation*
The Sue Wilder Fund at
Our Fund*
The Wawa Foundation*
UBS Financial Services, Inc.*
Undersheriff Nichole
Anderson*
UPS*
Vanessa Serrano*
Warburg Pincus*
Wells Fargo Bank*
Will Spencer*
Women's Executive Club*
Womens Fund of the
Community Foundation
of Broward*
Zonta Club of Greater
Deerfield Beach

\$500 - 999

Barbara Romano
Broward County Trial
Lawyers Association Inc.
Cary Sampson
Christine & Art Lambertus
Cooley Bastone Gill
Family Charitable Fund
in Memory of Fred of the
Community Foundation of
Broward
Dr. Gena Chiropractic
Gale & Todd Butler Family
Fund of the Community
Foundation of Broward
Greek Orthodox Church of
St. Mark
Henry E. & Dorothy R.
Seibert Fund
IberiaBank
Jennifer O'Flannery
Anderson & Peter
Anderson
KPMG LLP
LaDonna Vieweg
Lauren Gallart
Maria & Tim Brown
Morris Treadway
Nikki & Brian Kopelowitz
Niroc Consultants, Inc.
Nora & Steven Weiss
Pauline & Richard Brodeur
Ray Fleischmann
Sara & Bill Nunez
Shiff Construction &
Development Inc.
Tanya Bower
The Esther Ragosin
Charitable Foundation

CITRUS

\$5,000 - 9,999

Community Foundation of
Tampa Bay
Kids Central, Inc
Rays Baseball Foundation

\$1,000 - 4,999

Citrus County Blessings**
Citrus County Education
Foundation**
Grace & Seton
Hengesbach
Kiwanis Club Of Inverness
U. S. Family Foundation, Inc

\$500 - 999

Lynn & Henry Bassett
Pam Ittner**
Patricia V. Thomas
Vanguard Charitable

CLAY

\$250,000 - 999,999

Anonymous*

\$50,000 - 99,999

Clay County Board of
County Commissioners*

\$25,000 - 49,999

Regions Bank Foundation*

\$10,000 - 24,999

Clay Electric Foundation,
Inc.*
Jenna Boyter*

\$5,000 - 9,999

Berkshire Hathaway Home
Services*
Jennifer Bradley*
Orange Park Medical
Center*

\$1,000 - 4,999

Alayna Summanen*
Carole Gardner*
Carrie & Chad Patrick*
CBV Cares, Inc.*
Chris & Deborah Glenn*
Clary & Associates
Professional Surveyors &
Mappers*
Davida Carter*
Destani L. Shadrack*
Dr. Anna Lebesch*
Emile & Doris Latour*
Family Matters of Florida
LLC*
Goacher Laurie*
Highpoint Community
Church*
Hope Schiller*
Jacksonville Greyhound
Racing, Inc./bestbet
Orange Park*
Jennifer & Patrick Nolan*
Katarzyna & Matthew
Walosik-Arenall*
Kenneth & Starr Keating*
Linda Woods*
Lisa Ashworth*
Lisa Dease*
Mona Gardella*
Ollavan Brown*
Publix Super Markets
Charities, Inc.*
Rachel & Norman Wright*
Richard Forrest*
Robert B Payne Candidate
for State Rep*
Rotary Club of Green
Cove Springs*
Rotary Club of Orange
Park*
Russell Buck & Jan Conrad*
Telecom Pioneers*
VyStar Credit Union*
Whitey's Fish Camp*

\$500 - 999
Alvin & Rosann Sprinkles
Anthony Bonk
Barbara & C.R. Coleman
Brandt Mitchell
Caroline Tingle
Concrete Specialist, Inc.
Deborah Mueller
Ellen Powell

Hagan Ace Hardware
Ismael Rodriguez
James Kaelin
Jeffrey Bobbitt
Kyle Powers
Matt Bryant
Michelle Cook
Orange Park Medical
Center Auxiliary
Partridge Well Drilling
Company, Inc
Prodiigi, LLC
Rotary Club of Orange
Park Sunrise
Roxanne Aiken
St. Johns River State
College
Target Corporation
The Heritage Bank
The Matching Fund Org

COLLIER

\$150,000 - 249,999

Collier's Reserve Country
Club Inc Women's Club

\$50,000 - 99,999

Linda & Terrence Stewart
Naples Children &
Education Foundation
Terrence & Linda Stewart

\$25,000 - 49,999

Bill & Kathy Avery
Charitable Fund
Carolyn S and Donald F
Obrecht Foundation
Dianne & Bradley Ament
Elizabeth K. Galeana
Charitable Foundation,
Inc.
Give Where You Live
Collier
The Richard M. Schulze
Family Foundation

\$10,000 - 24,999

4 Girls Foundation, Inc.
Arthrex, Inc.
Brooks and Joan Fortune
Family Foundation
Carol B Phelon Foundation
Collier County Board of
County Commissioners
Donna Martin Foundation
Jerry Galeana
MidWestOne Bank
Stock Development, LLC

\$5,000 - 9,999

Carol & Thomas Joseph
Clark Family Foundation,
Inc.
Craig & Jean Van Der
Voort
Daniel R. and Anne M.
Harper Foundation
Deborah & Bill Toler
Green Heron Fund
Ken & Adrienne Charak

Linda & Victor Grijalva
Nichols Foundation Fund
Ozark Family Foundation
Paul Pacter Fund
The Connors Foundation

\$1,000 - 4,999

Anita Pittman
Arlene & Donald Shapiro
Board of County
Commissioners
Bob Rommel Campaign
Boyle Family Fund
Brame Foundation, Inc.
Brian & Lesley Macdonald
Byron Donalds Campaign
Charles & Helen Donahue
Fund
Charles Maxwell
City Mattress of Florida, Inc
Claudine Leger-Wetzel
Community Foundation of
Collier County
Cynthia & Michael Lyster
Daniel & Deborah Peters
Daniel & Peggy Lekander
DaVita, Inc.
Dolores Zeeh
Dr. Harold J. & Mary Duffy
Pelzer Charitable Trust
Elisabeth Post Teller
Erin Otterbeck
First Florida Integrity Bank
Gail R. Fischer Charitable
Gift Fund
Gary Schwager Family
Fund
Goodwill Industries of
Southwest Florida, Inc.
Hannah & Mel Young
Harry Debes Family
Foundation
Herbert A Vance Jr
Charitable Fund
J R. Southworth
Jack & Teri Crusa
Charitable Giving Account
James & Helene Price
Jane & William Stepanek
Jeffery Stroman
Jeffrey A. Clark
Judith Finkle
Kathleen Azzariti
Kathryn & Paul Higbee
Kristin Cartwright
Lake Michigan Credit
Union
Lauren Maxwell
Linda Hurley
Lorelei Meeker & Geoffrey
M Grodner
Lux Boutique LLC
Maj Huynh-Le DMD PA DBA
Park Family Dentistry
Margaret & R. Parks
Williams Charitable
Foundation/SunTrust
Foundation
Margaret & David Wilson

Mark & Sandra Fossee
Melissa Smith
Michal & Mordechai
Wiesler
Nancy Crane
Naples Area Board of
REALTORS
Naples Gulfshore Sunset
Rotary Club Foundation
Inc
Open Your Heart To
Children Int.
Patricia Patterson
Qwest of Naples Inc DBA
Zazou
Richard & Diane
Breithaupt
Southwest Florida Amateur
Golf Association Inc.
St. Ann Parish
Stella Boyle
Stephen & Kathleen Crane
Stephen & Teresa Schrantz
Susan and William Brock
The Buhmaster Family
Foundation
The Daniel R and Anne M
Harper Foundation
The Forum Club of
Southwest Florida
The Heffer Family
Foundation, Inc
The Kenneth Martin
and Christine Hepburn
Foundation
The KM and CH
Foundation
The League Club, Inc.
The Schultz Family
Foundation
The Thorp Family
Charitable Trust
The William & Wilma
Paterson Charitable Gift
Fund
Theresa Spoleti
Vicente & Patricia Anido
West Bay Community
Charitable Foundation,
Inc.
William & Pamela Mitchell
William Fisher & Georgie
Doll

\$500 - 999

Amber Phillips
Annette & Michael Morrill
Ashley Santiago
Bill Lindsay
Carol Sheehy
Carol Winn
Carolyn Hunerberg
Celine Wells
Charles D. Carroll III
Christina Wells
Christine & Stephen Ross
Christine Chase
Claudia Biggers & Robert
Biggers III
Claudia Lubner
Craig & Landy Mueller Fund

David Bupp
Denise Caron
Dennis Hetler
E. Paul Tinsley
Edward A. & Kathleen
Mabry
Eleanor A. Osborn
Eleanor B. Irwin
Eliza Crowder
Frederic & Sandra Roth
Hugh & Sherry Whiting
Jacqueline Nelson
James B. McDonald, Jr.
James France
Jan Face Glassman
Campaign
Janice & Daryl Dulaney
Jeanne & E. R. McIntyre
Jeanne & Francis Donohue
Jeff & Shelley Shinn
Foundation
John & Barbara Donley
John & Marjorie Cuckler
John Peters Family Fund
John Schupper
Joseph & Maryann
Bausman
Joseph P. Giasi, Jr.
Jules Cogan
Kaleigh Grover
Karen & Timothy Layden
Kassolis Family Private
Foundation
Kay & Bradley Wright
Kenneth & Carolyn Lukens
Kevin & Joan Winters
Kristin Odonnell
Marielle Nageon De
Lestang
Marth Diveley
Mary White
Melissa Speech
Monika DeBenedictis
N Harris Computer
Corporation
Nancy Contardi
Naples United Church of
Christ
Nelson & Susan Gonzalez
Nordin/Craig Fund
Pamela Knous
Rajeev Bal & Mari Miller-Bal
Robert & Renee Cronin
Robert Ostrowski
Sedra G. Schiffman
Susan Gauta
Suzan Ruta
The Education Foundation
of Collier County
The Janet Showers & Day
Lewis Patterson Fund
The Raleigh Hill Fund
Vicki Tracy
W. & B.J. Ferriel
W. L. & Sharon Farmer
W.G. & Sue Slager

ESCAMBIA

\$25,000 - 49,999

Escambia County Sheriff's
Office
Jerre & John Peacock*

\$10,000 - 24,999

Karen & Thomas Brown*
Margie & Alan Moore*
Melba B. Meyer Charitable
Trust
Rachael & Albi Gilmer*
Santa Rosa Energy Center,
LLC
The Bear Family
Foundation, Inc.
TJX Foundation, Inc.
United Way of West Florida

\$5,000 - 9,999

Ann Belleau*
Bank of America
CAT Country 98.7 &
NewsRadio 92.3 & 1620**
Cox Communications**
Edward Jones Financial
Advisor
Florida Lottery
Gulf Power Company
Gulf Power Foundation
Janis & Bill Foley*
Laura Keene & Barry
Beroset*
Mary Gamble
Out Front Magazine**
Pensacola News Journal**
Switzer Brothers Charitable
Foundation
The Kerrigan Family
Charitable Foundation,
Inc.

\$1,000 - 4,999

Adelene Murdoch*
Allison & Bruce Patton
Amber Gordon*
Ann & Al Brown*
Appleyard Family*
Becky & John Tolan
Beverly & Thomas Vaughn*
Brenda Vigodsky & Family*
Candace & Adam Anz
Cathy & Peter Butler*
Centennial Imports
Charles & Valerie Toner
Cheryl Young*
Christina & Verdel Hawkins*
Claudia & Paul Tamburro*
Constance & Alan
Bookman*
Cristina & Brian Williams*
Cyndi Warren*
Danielle & Spencer Mullet*
Danielle Balfour*
D'Aun Johnson*
Dawn Henderson*
Denise Nichols Alley*
Diane Peterson*

Donna Ward*
 Dr. Nell Potter*
 Elaine & Brooks Davis*
 Elizabeth Callahan
 Emerald Coast Granite & Tile*
 Enterprise Holdings Foundation
 Escambia County Board of County Commissioners
 Ferry Pass United Methodist Women
 Florida Blue Foundation
 Forrest & Ed Faulkner*
 Fred Levin*
 Gayle Piret*
 Gulf Breeze Optimist Club
 Gulf Coast Plastic Surgery
 Helen Ihns *
 Holly Cook*
 International Paper Foundation*
 Jenn & Lewis Bear III*
 Jennifer Streckel*
 Jenny & Chris Roney*
 Jessica Lee
 Jewelers Trade Shop**
 Jill Lee
 Jock Mobley*
 Judie Zitzewitz*
 Judith & Ed Galbavy
 Justine Simoni
 Kaitlin & Preston Forshee*
 Karen & Ted Mansfield*
 Karla & Ted Ent*
 Kathy & Roger Ostrander*
 Kellie Hardy*
 Keri Medlock*
 Kiwanis Club of Big Lagoon*
 Kristen Deese*
 Kristina & John Gormley*
 Lauren & Mike Cutter*
 Laurie Rodgers & Pat Parmley*
 Lee & Butch Hansen*
 Linda & Charles Liberis*
 Linda & Joseph Buehler
 Lora & Lawrence Rodgers*
 Lorese Hines*
 Loretta & Randy Sansom
 Lorrie Collier Berry*
 Mallory Studer*
 Marcy Miller*
 Marianne McMahon*
 Marianne Moore*
 Marlene Santos*
 Marny & Donald Needle*
 Mary Jane & Mike Bass*
 Maureen McGill*
 Melissa & Robert Sidoti*
 Meraki Installers
 Merlyn & Milton Rogers*
 Michelle Fraley*
 Michelle Salzman*
 Nan DeStafney
 Navy Federal Credit Union

Patricia & Mike McCormack*
 Pete Moore Chevrolet Pizzaz, LLC**
 Randy McKenzie
 Rhonda Moorhead*
 Rotary Club of Pensacola Inc.
 Ruth & John Kane*
 Sansing Foundation, Inc.
 Scott Simmering*
 Sean Long*
 Sherie Snider
 Sue & Johnny Bell
 Susan & Brian Finger*
 Susan & C. Jay Dunton
 Susan Woolf*
 Tara Dolister
 Teresa & Arthur Shimek*
 Teri Levin*
 Terri Davidson
 Theresa & James Morehouse*
 Therese & Alistair McKenzie*
 Turner Family Charitable Foundation, Inc.
 Valerie & Ray Russenberger*
 Veterinary Emergency & Referral Center*
 Vickie & John Bolyard*
 Viki Weir*
 Wells Fargo Foundation
\$500 - 999
 Alicia Ahern
 Annetta Johnson
 Ashlee Carpentier
 Carmen Kirchharr
 Charlene Sanders
 Cherry Fitch
 Christina & David Alsop**
 Christy Laggan
 Erin & W. Bryan Adams
 Evan Jordan
 Fiore of Pensacola**
 Gulf Coast Business Coaching
 Karen Burke
 Kendall Neill
 Kool Graphics**
 Lauren A. Merritt, P.A.
 Lee Tracy of Pensacola**
 Lori NeSmith
 Marsha Stanton
 Maureen Donahue & Stephen Kirby
 Pam Endacott
 Paradise Home Services
 Pen Gulf, Inc.
 Pish Posh Patchouli's**
 Rebecca & Marc Cabassa
 Salz Studios**
 Shelley & Christopher Campus
 Tanya Shaffer
 Terri Papantonio
 The Hearing Doctor, Inc.

Tyler Kercher, State Farm Agent
 —
 Advanced Dental Concepts
Special recognition to Advanced Dental Care for providing Dental Services to Pace girls since 2009.

HERNANDO

\$25,000 - 49,999

Hernando County Board of County Commissioners

\$10,000 - 24,999

Christina Gray

\$5,000 - 9,999

ICTC
 Kids Central, Inc
 Papa Joe's Pizza Pasta Subs LLC

\$1,000 - 4,999

Greater Hernando County Chamber Commerce
 GTE Charitable Foundation
 Hernando County Education Foundation
 Kiwanis Club of The Adventure Coast Charitable
 Kiwanis Club of the Brooksville Ridge
 Mark Casanta
 Walmart - Store #6020
 Walmart Stores, Inc.

\$500 - 999

American Aviation
 Barrette Outdoor Living
 Bart Gray
 Beta Sigma Phi
 Blaise Ingoglia Campaign
 Global Jetcare, Inc.

HILLSBOROUGH

\$100,000 - 149,999

Florida Blue Foundation*

\$50,000 - 99,999

The Schoen Foundation
 United Way Suncoast

\$25,000 - 49,999

Community Foundation of Tampa Bay

\$10,000 - 24,999

Amgen
 HCSO Charities, Inc.
 N-41 Bingo
 New York Yankees Foundation
 Tech Data Charitable Donor Advised Fund
 Women's Fund

\$5,000 - 9,999

Vermont Community Foundation

Altrusa International of Tampa - Wilma B. Hogan Foundation
 BB&T Charitable Fund
 Publix Super Markets Charities, Inc.*
 Raymond James Financial
 Tampa Electric Company
 TD Charitable Foundation
 USAA
 Wal Mart Stores, Inc.

\$1,000 - 4,999

Adrea Garrison
 Amanda Pilcher
 Amscot Corporation
 Andrew Gordon
 Annette & Ryan O'Malley**
 Anonymous
 Autumn Bonsall
 Bates Group LLC
 Benevity Community Impact Fund
 CDW
 Charity Polo Classic, Inc.
 Chelsea Hoagland
 Cole, Scott & Kissane P.A.
 Dominique Heller
 Dr. Latesha Elope
 Emily Gordy
 Enterprise Holdings Foundation
 Equitable Foundation Fund
 Equitable Foundation Inc.
 Erin Linehan
 Jack & Tara Olmstead
 Jean Jumet
 Jenkins Law PL
 Kathy Massing
 Kris & Kelly Verra
 Linda Brooks
 PAR, Inc.*
 Paul Downing
 Pure Barre
 Rasmussen College
 Reliable Claims Adjusting
 Sheriff Chad Chronister
 Shook, Hardy & Bacon
 Support 4 Children Florida, Inc.
 SWIFS
 Tanya Hollins
 The Fountain Group
 TierTek
 Trustpoint.One
 Zonta Club of Tampa
\$500 - 999
 AAUW - Sun City Center Branch
 Amy & Jeffrey Rettig
 Ashley Rountree
 Campaign Against Human Trafficking South Shore, Inc.
 Cathy & Grayson Kamm
 Cristal Blackwell-Lastra
 Donna Faircloth
 Elizabeth Moun

Faith Burriss
 Hilary High
 James Spencer
 Jamie Garrison
 Jason & Candi Nevin
 Jennifer Stout
 Joena Bartolini Mitchell
 Judith Ferlita
 Julie Fanelli
 Kayla Menendez
 Kendra Scott, LLC
 Kim & Thomas
 Lissette Colón
 Mercy Ameyaw
 Minnie Richmond
 Ms. Lori Watt
 Nielsen
 Shannon Kerney
 Tekoa Pouerie
 Vanessa Henwood

JACKSONVILLE

\$50,000 - 99,999

United Way of Northeast Florida

\$25,000 - 49,999

Natalie & Andrus Healy*
 Delores Barr Weaver Fund*
 Healy Family Foundation*
 Peggy & J.F. Bryan*

\$10,000 - 24,999

The Allstate Foundation
 Amber & Sean Anthony*
 Florida Blue Foundation*/**
 Gordon & Lynn Bailey*/**
 Group 4 Desgin, Inc.*
 Joanne & Jim Marx*
 Kelly & Scott Gramling*
 Kids Hope Alliance
 Marco Family Foundation
 Mrs. Mary Virginia Terry*
 Mayo Foundation for Medical Education & Research
 Stuart Ashby-Fore*
 The Thomas M. Kirbo & Irene B. Kirbo Charitable Foundation
 Valerie & Sean Scrogins*

\$5,000 - 9,999

Allan McCarty
 American Heritage Life
 Ann Mackey*
 Arthur D. Dobosiewicz*
 Billie & John Rawot*
 Catering by Liz*
 Connie Menor*
 Cynthia Kaneer*
 Cynthia & James Edgar*
 Debbie Tennison*
 Deerwood Rotary Charities
 Emily B. Bishop*
 Erin Homan*
 Fort Family Investments

Heather Nathanson
 Holly Emas*
 Joan & James Van Vleck
 Jacksonville Jaguars
 Foundation, Inc.**
 Jan Kirby*
 Jay Alligood*
 Jennifer Candelino*
 Jennifer Kjellman*
 Jennifer & Steve Betz*
 Jennifer Ragsdale-Garrett*
 Patty & Jose De Rojas*
 Karen V. Nasrallah*
 Kelly & Robert Straub*
 Kimberly Allen*
 Kimberly & John Reed*
 Katie & Kyle Dorsey*
 Laura & Brad Gonzales*
 Linda & David Stein*
 Lindsay Moore*/*
 Martha Fraser*
 Mary E. Warner*/*
 Mary Morris*
 Melissa Oswald*
 Nadine Gramling*
 Pajcic & Pajcic, P.A.
 Patricia & Richard Jones*
 Patricia & David Henry*
 Cecy & Paul Fazio*
 Publix Super Markets
 Charities, Inc.
 Rae & Ronnie Brown*
 Rosalyna Avila*
 RS&H Elevate Fund
 Russell & Jan Buck
 Sarah Bohr*
 Sean Todd*
 Shylo Kline*
 Staci M. Rewis*
 Steve & Jennifer Betz*
 Susan & Ted Hughes*
 Suzanne & Mark Horne*
 Thurston Roberts
 Charitable Foundation
 Tom Bush Family of
 Dealerships
 Urvashi & Deven Patel*
 Veronica Lacy*
 Victoria Hahn & Craig
 Seeley*
 VyStar Credit Union
 Whitney Heflin*
 Zimmerman Family Fund*

\$1,000 - 4,999

Abby & Bernie Rice
 Amy L. Lemery Revocable
 Trust
 AT&T Telecom Pioneers
 Florida Chapter #39**
 Baptist Health Systems, Inc.
 Barbara A. Miller**
 Becky Schumann
 Cindy & David Baker
 Concentrix Corporation
 CREW Jacksonville
 CSX Transportation

Danis Construction, LLC
 David Garrison & Terri
 Talley Venters Fund
 David Turner
 Deborah Williams
 Deercreek Women's
 Alliance
 Delafina Racing Inc.
 Wilfrid & Elizabeth Wilkinson
 Emerald C's Development,
 Inc.
 Genario Wynn
 Haskell
 Jacksonville Chamber of
 Commerce
 Jane & Timothy
 Riechmann**
 JEA
 Joan Grander & Gordon
 West**
 JPMorgan Chase &
 Company
 Juliana Rowland & Scott
 Mattson
 June C. Buckley
 Lesley Toke
 Lillian A. Braden**
 Madaris Entertainment
 Margaret S. Schiffrs
 Max George
 Medtronic Foundation
 Megan B. Del Pizzo
 Michelle Cook
 Crystal & Mike Freed
 Family
 NuStar Foundation
 O'Neill Family Charitable
 Foundation
 Pamela & Keith
 Riechmann
 Petway Family Foundation
 Remmer/Ryzewic Family
 Fund*
 RS&H, Inc.
 Shawn Trotter
 Sonny Martin
 Tammi McGriff
 The EJC Family Fund
 Tom Bush Regency Motors
 Tommy & Joni Taylor
 Trisha Haskell
 US Assure
 Mr. William D. Lawson, Sr.

\$500 - 999

Abramson Family
 Charitable Gift Fund
 American Family Mutal
 Insurance Company, S.I.
 Amy Ruth
 Arezou Jolly
 Benevity Community
 Impact Fund
 Brenda Mathisen
 Brette Petway
 Brian Riley
 Harrell Family Revocable
 Trust U/A
 Higher Definition Church

Intrepid Capital
 Management, Inc.
 Jan Wurster
 Jeanne Lancaster
 Johnson & Johnson
 Foundation
 Leslie Calder
 Lisa Henry
 Lori M. Ledoux**
 Marilou Halim
 Mark McGowan
 Marle Spacek
 Mary Jane Renninger
 Matthew Peters
 Patricia Trevathan
 Paul Patterson
 Pete Madorma
 Selena Breedlove
 Shepherd of the Woods
 Lutheran Church
 Staats Family Charitable
 Fund
 Target Corporation
 The Doerr Foundation
 The Law Offices of Ron
 Sholes, P.A.
 The Levenson Family
 Charitable Fund
 Thelma Jack
 Uptown Civitan
 Virginia Elliott

LEE

\$50,000 - 99,999

The Robert J. Gunterberg
 Charitable Foundation

\$25,000 - 49,999

Cape Coral Fraternal
 Order of Police Lodge 33
 Elizabeth K. Galeana
 Charitable Foundation,
 Inc.
 Lee County Board of
 County Commissioners
 The Richard M. Schulze
 Family Foundation
 United Way of Lee, Hendry,
 Glades and Okeechobee
 County

\$10,000 - 24,999

Cheryl and David Copham*
 Creighton Construction &
 Management, LLC
 First Horizon Bank
 Foundation
 Fred & Jean Allegretti
 Foundation, Inc.
 Office of the Sheriff, Lee
 County
 The ROS Foundation
 Sandy Stilwell-Youngquist &
 Tim Youngquist

\$5,000 - 9,999

Arthrex Charitable Giving
 Foundation
 Ed & Connie Lizak*
 Ding Darling Wildlife
 Society, Inc.

Edison National Bank /
 Bank of the Islands
 Enterprise Holdings
 Foundation
 Eunice & Alexandra
 Bremner*
 Gail Markham*/*
 Megan DiPiero
 Photography*
 Naomi Lee Bloom*
 Publix Super Markets
 Charities, Inc.
 Home-Tech
 St. Michael and All Angels
 Episcopal Church
 Suncoast Credit Union
 Foundation
 Vanessa Gilyard*

\$1,000 - 4,999

Amanda Cross*
 Amira Fox*
 Anna Boots Tolles*
 B. Pat O'Rourke*
 Betty Anderson
 Cape Coral Community
 Foundation
 Chris-Tel Construction
 Company
 Cushman & Wakefield
 DeAngelis Diamond
 Deborah K. Campbell*
 Donna Sublett*
 Florida Sales & Marketing
 LLC
 Aloia, Roland, Lubell &
 Morgan, PLLC
 Gary Griffin
 Giving Alliance of Women
 Goodwill Industries of SWFL
 Henderson Franklin
 Attorneys at Law
 Morgan & Jack Morgan*
 James & Diann Seals*
 Jeffrey & Louise Schrank
 Family Foundation
 Karen Mosteller*
 Kay MacDougall & Sons
 Memorial Fund
 Lake Michigan Credit
 Union
 Lee Health
 Mariel Goss*
 Michele & William
 Holcomb
 Patricia Bell*
 Patrick Flood*
 Riverwoods Plantation RV
 Resort Condo Assoc., Inc.
 Michael & Sally Jackson*
 Sandra & Rich Heinrich
 Sanibel Captiva
 Community Bank
 St. Peter Lutheran Church
 Validus Senior Care
 Stuart Draper
 The Cape Coral Kiwanis
 Foundation, Inc.
 The Quinton B. and Beverly
 H. McNew Foundation, Inc.

The Uncommon Friends
 Foundation, Inc.
 Valerie's Lounge & Liquors
 Charles & Virginia Huether*
 Zonta Foundation of S.W.
 Florida, Inc.

\$500 - 999

Alice Madden Giving Fund
 Alison C. Hussey
 Allyson & Steven Ross*
 Andrea & William Horowitz*
 Ann McNamee
 Anne & Will Wittenborn**
 Barbara Hawker Yeomans
 Fund
 Betsy Foreman
 Carol Robinson
 Carolyn Swift
 Cheryl Komnick
 Deborah & Bill Toler*
 Derrick Gregory*
 Diana & Scott Willis*
 Donna J. Caruso*
 Doris Colgate*
 Rusty Brown*
 Elaine H. Green
 Jamie & Wayne Gates
 Jane & Jay Brickley-Disla*
 Joan Henry*
 Suzanne Boy & John
 Agnew*
 Jordan McHugh
 Charles & Kitty Green*
 Kathy & Ronald Toll*/**
 David & Kellie Urban
 Kelly L. Fayer, P.A.
 Lenora Marshall*
 Lisa Farrell Sands*
 Margaret & Robert Geltner*
 Marilyn & Anthony Stout*
 Dr. Marlene Moulton*
 Mary Fischer*
 Mike McMurray*
 Nancy McGovern*
 Patricia A. Carroll*
 Rachel Pierce*
 Jeff & Rebekah Barney*
 Robert Half International
 Robin Krivanek*
 Rotary Club of Estero
 Foundation Inc
 Dr. Shari Skinner*
 Southwest Florida Electric,
 Inc
 Terry Broughton*
 ToniRae Hurley
 Wanda M. Hurt

LEON

\$25,000 - 49,999

Leon County Board of
 County Commissioners
 Leon County Board of
 Housing and Human
 Services

\$10,000 - 24,999

American Funds from Capital Group
Jimmy & Sherrill Ragans*
Kerrigan Family Charitable Foundation, Inc.
Leon County Commission
Truist Charitable Foundation

\$5,000 - 9,999

Bank of America Charitable Foundation, Inc.*
Florida Blue Foundation*
Publix Super Markets Charities, Inc.*

\$1,000 - 4,999

Alicia Crew and Janet Stoner*
Civitan Club of Tallahassee
Cobb Realty & Investment Co.
Dot N. Binger
Downtown Community Church of Tallahassee
Elizabeth Hammock
FBMC Benefits Managment, Inc
Janet & Alicia Stoner
Kathleen Brennan
Katie Brinson
Leon County Sheriff's Office
Liberty Dental Plan Corporation
Mainline Information Systems
Malone Smith
Oasis Center for Women and Girls
Parker Brothers Roofing and Construction, Inc.
Patricia McCray
Patrick Proctor
Prime Meridian Bank
Region Bank
Sue Anstead
Tallahassee Orthopedic Clinic
Tallahassee Police Department
Tallahassee Women Lawyers Inc.
TC Federal Bank
Thomasville National Bank
VyStar Credit Union*
Willie Williams**/**

\$500 - 999

Aisha Ganzy Allen
Ayasha Scott
Bannerman Crossing II, LLC
Blake Hayward
C.W. Roberts Contracting, Inc.
Cherry Lake Investments
Christopher Burdett
Crawford Atkins
Curtis Richardson

Danielle Galvin
David & Katherine Overstreet
Eli Roberts & Sons
Florida Autosport
Garcia's Lawn Care & Landscaping, LLC
Jeanna Olson
John Humphress
Kathleen & Charles Hampton
Kelly Hutchinson
Krista M. Campbell
LaShawn Gordon
Melanie Lee
N FL Chapter of the Nat'l Org. of Black Law Enf. Executives
Neece Tire & Auto Service, Inc.
New York Life Foundation
Patrice Bidwell
Ragans & Roberts, Inc.
Renisha Gibbs
Robert R. Callahan
S. Akin Akinyemi Campaign
The Beatitude Foundation, Inc.
The Fonvielle Foundation Inc.
Tiffany Ardley
Tracy Thomas
Vickie Gordon
Zonta Cares Inc.

MACON**\$10,000 - 24,999**

Griffith Family Foundation Inc.
The John and Polly Sparks Foundation

\$1,000 - 4,999

John S. and James L. Knight Foundation

MANATEE**\$150,000 - 249,999**

Manatee County Board of County Commissioners
The Estate of Walter Schmid, Jr.

\$100,000 - 149,999

Bradenton Kiwanis
Daniel S Blalock Jr Charitable Foundation

\$25,000 - 49,999

Barbara Jennings
Green Charitable Trust

\$10,000 - 24,999

Betty Casey
Brian & Nancy Coleman
Irving and Jane Brown Foundation
Louis and Gloria Flanzar Philanthropic Trust

Publix Super Markets Charities, Inc.

\$5,000 - 9,999

Alexandra Ziegler
Anna Maria Oyster Bar, Inc.
Blake Medical Center
Brian & Caroline Ellerson
Firkins Automotive
Kim & Greg Dalglish
Patrick & Charlene Neal
Pittsburgh Pirates/ Bradenton Marauders
Tammy Cox-Leavell

\$1,000 - 4,999

Acme Termite & Pest Control
Air & Energy Inc.
Amanda & John Horne
Amy Bowes
Andria & Dan Howe
Anna Maria Island Women's Giving Circle Fund
Bob & Dottie Turner
Bob & Mary Miller
Boyd Realty LLC
Bradenton Herald
Bradenton Police Department
Charles DeRose
Cindy Jones Burke
Dana & Larry Foerster
Dr. Laura Ottaviani & Dr. Steven Schafer
Early Learning Coalition of Manatee County, Inc.

HSH Designs

Icard, Merrill, Cullis, Timm, Furen & Ginsberg

Indelicato Family Chiropractic & Wellness

Insurance Time of Bradenton, Inc.

Jessica & Randy Currin

Jodi & Rob Boyatt

John S. and James L. Knight Foundation

Kappa Kappa Gamma Alumnae Club

KBR Foundation, Inc. in Memory of Margaret Dole Rust

LaPensee Plumping Pools Air

Manatee County COVID-19 Community Response Fund

Manatee Memorial Foundation, Inc.

Margaret & Brian Berry
Mauldin & Jenkins, C.P.A., LLC

MCS Foundation Inc

Mindy & Wayne Rollins

Mosaic

Paul & Ula Hoenle

Sandra Robinson

Service Club of Manatee County

Teresa Rawe
Teri & Eric Folkens
Thomas Plowman & Kelly Howze
Trinity Financial Planning, LLC
US Service Animals
Vera Cash Foundation, Inc.
William G and Marie Selby Foundation

\$500 - 999

Alvord Family Fund
Amanda Richards Salon
Angela & Andrew Varga
Bayshore Eye Care PA
Betsy & Chris Pennewill
Candace Bennington
Carol & Bob Carter
Cathy Layton
Christina Garraffa
Connie & Terry Wagner
Dr. Robert & Parvaneh Indelicato
Dr. Shekyla Scott
Durand & Carol Adams
Fawley Bryant Architects, Inc.
Integra Capital Advisors
James Benson
Jane Stewart
Jennifer & Stephen Ierulli
Karen DeSimone & Rick Hinch
Karen LaPensee
Karen Place
Kristin Hokanson
Macey & Stewart Moon
Manatee Family Dental
Mary Ann & Randy Allen
Melitta Hoenle
Michele Greene
Michelle Slaughter
Mike Lehman
Nancy Bancs
Richard Pizzuto
Roger Wick
Roy Parker
Scott Kallins
Sharon Hillstrom
Stacey Gryboski
Susan & Cliff Walters
Susan Kelly
Tara & Bill Poulton
The Marshall Fund of the Manatee Community Foundation
The Oelker Family
Tim Fanning
Willis Smith Construction
Zekos Bradenton LLC

MARION**\$50,000 - 49,999**

Community Foundation for Ocala/Marion County, Inc.

\$10,000 - 24,999

City of Ocala
Dorsay
Kids Central, Inc

\$5,000 - 9,999

Joseph C. Burgatti
Ocala Marion County Association of Realtors
Palmer Foundation, Inc.
Pittman Law Office, PA
The Musikantow Foundation

\$1,000 - 4,999

Alina & Brian Stoothoff
Becky & James Schatt
Brad & Tammy King
Civitan International
Craig Bachrodt
Derek Miller
Fidelity Investment
Jean and Mark Imes
Jeffrey W. Kirk
Lana S. Rosenberg
Louise M. Werner
Robert & Mary Landt
Mulberry Grove Animal Hospital, Inc.
Nira Colyn
Pacific Arches Corporation
Paul and Joyce Urban
Stan McClain Campaign Account
Suz and Art Geeraerts
The HR Doctor, Inc.
United Way of Marion County

\$500 - 999

Anthony and Pamela Badolato
Barbara Woodson
John & Catherine Fitzpatrick
Charlie & Michelle Stone
Elizabeth Rohan
First Presbyterian Church of Ocala
Harper Family Charitable Fund
James Hagans
Jennifer Teitelbaum and William Gladson
Jessica McClain
Karen Szuba
Regions Bank
The David & Lisa Midgett Foundation
Trow & Dobbins, P.A.
William Findlay

MIAMI**\$250,000 - 999,999**

Leslie L. Alexander Foundation Inc.

\$50,000 - 99,999

The Miami Foundation For

a Greater Miami

\$25,000 - 49,999

Healy Foundation
The Batchelor Foundation, Inc.

\$10,000 - 24,999

Bank of America
Johnson & Johnson Foundation
The Kirk Foundation
Truist Charitable Foundation
United Way of Miami-Dade

\$5,000 - 9,999

Commissioner Audrey Edmonson
Gregory Roll
Publix Super Markets Charities, Inc.
Robert & Stacey Crapsey
The Roman Family Trust Fund

\$1,000 - 4,999

4 Girls Foundation, Inc.
Anonymous
Cindy & Irving Lerner
Comcast
Elsy Bello Gomez
Florida Blue Foundation
Isis Carbajal de Garcia
Kaufman Rossin & Co.
Lester Langer
Maggie Barreto-Tercilla & Orlando Tercilla
Michael Logue
Mike Tomas
Soraya Marles
The Grant Cardone Foundation
Travel Professionals of Color
Verizon

\$500 - 999

Daniella Levine Cava
Johanna Rousseaux
Josephine K. Trippe
Kush by Spillover
Nicole Mcaree-Blackburn
Pat Morris
Peggy Hudson
Phillip Logue
The Black Professional Network of American Airlines- Miami

ORANGE

\$50,000 - 99,999

Heart of Florida United Way, Inc.

\$25,000 - 49,999

Anonymous

\$10,000 - 24,999

AdventHealth

\$5,000 - 9,999

ADP, LLC
Florida Power & Light Company
Lyndsey Lang*
Paul Jessen*
Pooja & Ian Sheth

\$1,000 - 4,999

Adrianna Sekula
Anne Landrum*
Bridget Cox
Brittany Corfman Parks
CED Strategies LLC
Champion Title & Closing LLC
Christy Knox
ClubCorp Charities, Inc.
Dan Newlin Injury Attorneys
Elise MacCarroll-Wright
Farah Bloom
JACOBS
Jason Herman
Jermaine Stokes
Jocelyn & Andre Deprez
Karen Buchan
Kristin LaFleur
Kyra Solutions Inc
Lavon Williams
Lorenzo Brown
Mauricio Chiropractic Group Inc.
Meranda Landes*
Mrs. LaVon W. Bracy*
Next Medical Florida, LLC
Rebekah Dorworth
Sarah Marotta-Geltz
Susie Carlton*
Tessa Boyd*
The Martin Andersen-Gracia Andersen Foundation, Inc
The University Club of Winter Park
Vanasse Hangen Brustlin, Inc.
Walmart Stores, Inc.

\$500 - 999

Aldis Stefansson
Andrew Zemel
Ashley McGehee
BioSpine Orlando LLC
Cindy Fenty
Ellen & Gary Parker*
Gemma Dehnbostel
George Anderson
Hampton Law Firm
iConnect Real Estate
Ilyse Katz
James Galbraith*
Jim Reinert
Karen Castor Dentel Campaign
Kathleen Shea
Kathryn Grindle
Kelly Cohen
Kimberley Wyckoff-Fink

Laural DeWild
Law Offices of Michael B. Brehne, P.A.
Lewis-Ray Mortuary, Inc.
Linda Guzman
Machell Chavez
Nancy Jordahl
Rajia Ackley
Robert Ritchie
Sasha Ellis
Tanya Hollins
The Pink Pearl Foundation

PALM BEACH

\$50,000 - 99,999

Blue Wave Marketing, Inc.

\$25,000 - 49,999

4 Girls Foundation, Inc.
Community Foundation for Palm Beach and Martin Counties
The Lost Tree Charitable Foundation, Inc.

\$10,000 - 24,999

Branch Banking & Trust Co.
Jewish Women's Foundation of the Greater Palm Beaches
Office Depot
Palm Beach County Sheriff's Office
United Way of Palm Beach County

\$5,000 - 9,999

Publix Super Markets Charities, Inc.
The Walter & Adi Blum Foundation, Inc.

\$1,000 - 4,999

Aisha Ali
BNGF Perrella Fund
Carmine's
Catherine Ali**
Clifford Hartman
Comcast Cable Communication
Emailabilities
Esther & Brian LaBovick**
GenNx Foundation, Inc.
Gerard & Vivian Gray
Heather Woolf
Katrina Lindsey
Keely Gideon-Taylor
LaBovick Law Group
Landon Fund
Latasha Akoma**
Lilly Pulitzer - Palm Beach Gardens
Palm Beach County Justice Association
Pamela Cope**
Regions Bank
Searcy Denney Scarola Barnhart & Shipley, P.A.
Susan Levin

Vevienne Ebanks
Wells Fargo Philanthropic
YourCause, LLC Trustee for NextEra Energy, Inc.

\$500 - 999

Alliance Bernstein
Barbara Field
Cary Stamp & Co.
Children's Healthcare Charity, Inc.
Exchangette Club of the Northern Palm Beaches, Inc.
FPL Energy Services
Free Spirit Outreach
Lavada Williams
Liggio Law, P.A.
Michelle Suskauer
Morgan Stanley Smith Barney, LLC
Saint Mark Greek Orthodox Church
State Farm - Gabrielle Garcia Poleon Agency
TDS Management, INC
The Nickler Group

PASCO

\$10,000 - 24,999

Calta Family Foundation, INC

\$5,000 - 9,999
Board of County Commissioners Pasco County
Jobs for Florida*
Publix Super Markets Charities, Inc.*
Wilton Simpson

\$1,000 - 4,999

Alice Everard Charitable Foundation
Amanda Calta
Amy G. Cohen
Brian Corley
CenterState Bank
Cynthia R. Miller
Danny Burgess Campaign
GTE Charitable Foundation
Katrina Cozzi
Kemp, Ruge & Green Law Group
Mary Surnicki
Melanie Wetmore
Pasco Education Foundation
Paul Downing
Psetas, Moore & Tetlow, P.A.
Regan Weiss
Rotary Club of New Port Richey Fund, Inc.
RunSignup
Sheriff Pasco County Operating Account
Sunrise Consulting Group
Taxpayers For Responsible

Inc.

Ten Broeck Tampa, LLC
United Way of Pasco County
United Way SunCoast (of Tampa Bay)
Uradco - WREC
Wal Mart Stores, Inc.

\$500 - 999

AKPT-LLC
BayCare Behavioral Health
Beth Dillinger Foundation, Inc.*
Curtis Crider
Elevated for Success
Gary Joiner Campaign
Jean Reuther
Jim Van Valin
Kathryn Starkey
Keeley Karatinos
KGS Nebraska LLC
Kurt S. Browning
LaPorte, Mulligan & Werner-Watkins, P.A.
Mander Law Group
Marguerite Kling
Molly Pohlman
Monica Angel
Pasco Hernando State College
PKT LLC
Pkt-Cw LLC
PKT-HB LLC dba Culver's Hillsborough Ave.
Rosalyn & Paul Fenton
Rotary Club of Land O' Lakes Charities
Rotary Club of Wesley Chapel
Suncoast Clinical Research
Tampa Bay Golf & Country Club
The Rotary Foundation/Holiday Rotary Endowment Fund Inc.
West Pasco Multiple Service

PINELLAS

\$100,000 - 149,999

Juvenile Welfare Board of Pinellas County
The Schoen Foundation

\$50,000 - 99,999

Francis & Gertrude Levett Foundation
Pinellas CARES Nonprofit Partnership Fund

\$10,000 - 24,999

Allegany Franciscan Ministries
N-41 Bingo
Pinellas Community Foundation

\$5,000 - 9,999

Altrusa International of Tampa - Wilma B. Hogan

Foundation,
Beth Dillinger Foundation,
Inc.
Duke Energy Foundation
Irene H. Sullivan
Publix Super Markets
Charities, Inc.
Tech Data Corporation

\$1,000 - 4,999

Ada Ruth Pettis
City of Pinellas Park
Debbie & Larry Lieberman
Egan Family Foundation
Fund
Isaly Dairy Company
Charitable Trust
Johns Hopkins All
Children's Hospital
Julie Weintraub's Hands
Across the Bay
Karen Burgeson
Kay & Bob Dillinger
Keiser University
Mary Mascaro
Tiffany Hilton
Wal Mart Stores, Inc.
Women's Club of
Mainlands Unit 5

\$500 - 999

Bahiyah Sadiki
Barbara Spatz
Brian Lawandus
Claire A. Stiles
Craig Steffen
Denise Young
Fidelity Charitable
Jennifer Thayer
Jim Van Valin
Josephine Seivert
Kellie Gilmore
Kelly McAdams
Lili Sheedy
Nancy & William
Greenberg Family
Philanthropic Fund
Renee E. McQueen
Sally Zeh
Tanya R. Hollins
TLC Medical Consulting,
LLC
TOP Jewish Foundation
Vicki Kananen
Wendy Coughlin

POLK

\$150,000 - 249,999

George Jenkins
Foundation, Inc.
Iron Horse Family
Foundation

\$25,000 - 49,999

United Way of Central
Florida

\$10,000 - 24,999

Anonymous

Auto-Owners Insurance
Company
N-41 Bingo
Tracy & Steven Achinger

\$5,000 - 9,999

Florida's Natural Growers
Foundation
Publix Super Markets
Charities
Saddle Creek Logistics
Services
Suncoast Credit Union
Foundation
The Campisi Family
Foundation, Inc
The Glenn W. and
Hazelle Paxson Morrison
Foundation
Zion Evangelical Lutheran
Church of Waterville
Mission Endow

\$1,000 - 4,999

Ana & Andrew Gillespie
Baron Management LLC
Beverly & Clayton Hollis
Bill & Pamela Mutz
Bracken and Bergwall PA
Carol & Barney Barnett
Cheri Glogower
Citizens Bank & Trust
Clay Uselton
Colleen Burton Campaign
Courtney & Ryan Larson
CPS Investment Advisors
Dave Ragan
Deanna & Howard Bayless
Deb Joneck
Deborah & Evander
Boynton
Diana & Bobby Townsend
Elizabeth & William Taylor
Greg & Cheryl Shell
Hal & Tamra Akins
Harrell's LLC
Heart of Florida United
Way, Inc.
Heath Funeral Chapel, Inc.
James Glase
Jamie Roberts
Jan Phillips
Jeff Hiday
Jim Tincher
John & Lu Fitzwater
Joy Morse Insurance
Agency Inc.
Kathryn Abels
Kathy & Clifford Otto
Lakeland Electric
Lori Chaney
Martha & James Dayvault
Melissa Batovsky
MidFlorida Credit Union
Nancy Georges
Peter Jones
Peterson & Myers, P.A.
Prime Meridian Bank
Regal Automotive Group

Rita Staffing
Roy Bates
Steven Bill
Steven Forrest
Steven Petersen
The Sanoba Law Firm
Tony Tincher
Trevor Brinkmeyer
Trista Otto
Wells Fargo Foundation

\$500 - 999

Amy Laderer
CHERA
David Carter
Debra & David Gula
Gasper & Karen Kovach
Ilse & Frank Buzzanca
Institute of Organization
Development, Inc.
Jeffrey Burgoyne
Jimmy Bauknight
JM RP
Joe & Karen Ruthven
John Reilly
John Vuknic
Julian & Stacey Weeks
Julie & Douglas Johnston
Keith Pope
Kimberly & Greg Ruthven
Lee Crosby
Lynn Browning
Mary Jo Bittner
Michael & Teresa Beckham
Michael Russell
Nancy Rehbine-Zentis
Nathan Benson
Pat Hayhoe
Payne Air Conditioning &
Heating, Inc.
Robert Staehle
Robert Stursberg
Scott LoVecchio
Stephen Shea
Susan & Jeff Cox
Tim Boates
Willis Blackwood

TREASURE COAST

\$50,000 - 99,999

Children's Services
Council, St. Lucie County

\$25,000 - 49,999

Andrew and Robin Hunt
Philanthropic Fund

\$10,000 - 24,999

Impact 100 St. Lucie 2020
Fund
United Way of St. Lucie
County
William and Helen Thomas
Charitable Trust

\$5,000 - 9,999

Florida Power & Light
Company

\$1,000 - 4,999

Anna J. Westmore
Aramark
Busch Family Foundation
City of Ft. Pierce
Comcast Cable
Communication
Dawn W. Brown
Dollar General Literacy
Foundation
Eveitt Simmons*
GTL
JP Morgan Chase & Co.
Workplace Giving
Keiser University
Mark and Renee Barnes*
Premier Realty Charitable
Fund II
Publix Super Markets
Charities, Inc.*
Quentin B. Allen
Shrita Walker
SLC Clerks Employee
Committee St Lucie Clerk
Charity Fund
Treasure Coast Food Bank
Wal Mart Stores, Inc.
Will & Rachel Armstead

\$500 - 999

Atlantic Payroll Partners
Boys & Girls Club SLC
Coggin Auto Group
Dana Trabulsy Campaign
Jason Wheeler
Jesse Hert
Jolien Caraballo
Campaign Account
Larry Neese, LLC
Paula Earl
Simmons, Finney &
Winfield, LLC
The Real Financial Group
LLC
Theora G. Webb

VOLUSIA FLAGLER

\$25,000 - 49,999

Boys & Girls Clubs Of
Volusia Flagler Counties Inc
United Way of Volusia-
Flagler

\$10,000 - 24,999

Florida Power & Light
Company
The 2020 Tom Leek
Campaign Account
Truist Charitable
Foundation
Volusia Flagler Family
YMCA

\$5,000 - 9,999

AdventHealth

Paul B. Hunter &
Constance D. Hunter
Charitable Foundation
Private Foundation, Inc./
Georgia & William Akers

\$1,000 - 4,999

Alexis Lenssen
Ameriprise Financial
Audrey Butler
Cobb & Cole, P.A.
Community United
Methodist Church
Erin W. Masters
Fifth Third Bank
Fraternal Order Of Eagles
Galin Crist
Hershey McChesney
Insight Community
Foundation, Inc.
John Polsinelli
Karen & Clay Ervin
Keyes, Stange & Wooten
Missing Peace
Morgan Stanley Gift Fund
Nancy & Lowell Lohman
Omar Vargas
Peter Morrison
Retail First Insurance
Company
Sheila A. Jordan
Sherry & Jerry Keyes
Simpkins Family
Foundation, Inc.
The Missing Peace Inc

\$500 - 999

Amscot Corporation
Ann Marie C. Zweifel
Campaign Account For
Billie Wheeler
Charities Aid Foundation
of America
Dargan Family Charitable
Fund
Deacon Design, Inc.
Elizabeth Mathews
First Presbyterian Church of
Daytona Beach
Gloria Toro
HDC General Operations
Account
JoAnne King
Judith & Brad Campbell
Michelle Leek
Nancy & Neal Brown
Realty Pro Title, LLC
Rotary Club of Daytona
Beach West
Stephen J. Roth
United Way SunCoast (of
Tampa Bay)

VALUES *and* GUIDING PRINCIPLES

Pace Center for Girls has nine core principles that guide our work.

HONOR THE FEMALE SPIRIT

We value and promote the female perspective by respecting its distinct needs, creating safe and gender-responsive environments and celebrating the female experience.

FOCUS ON STRENGTHS

We identify strengths in our girls, their families, our staff and our supporters. Using these strengths as our foundation, we build strong, confident and productive community participants.

ACT WITH INTEGRITY AND POSITIVE INTENT

We believe that all actions and decisions must be guided by the highest ethical principles, respecting the uniqueness of all involved and honoring each other's differences.

EMBRACE GROWTH AND CHANGE

We believe that everyone is capable of remarkable growth, and only by encouraging change can individuals, organizations and society reach their full potential.

VALUE THE WISDOM OF TIME

We understand that patience can be as powerful as immediate action, and each has its place. We value the discernment required for their effective use.

EXHIBIT COURAGE

Courage is essential to making a difference. It enables us to speak for those who cannot, take risks to do what is right, deliver just and fair consequences and be accountable for our actions.

SEEK EXCELLENCE

We strive for excellence in all we do by holding true to our mission, while consistently meeting high standards of performance, reflecting critically upon our accomplishments, seeking innovative solutions and believing all things are possible.

CREATE PARTNERSHIPS

We believe in developing effective partnerships and long-term relationships by listening to our staff, our girls and their families and our communities, incorporating each person's input and involving them in our decision-making process.

INVEST IN THE FUTURE

We work to create an environment that fosters the long-term growth and development of our girls, staff, agency and communities. We believe this is necessary to create results that have a lasting impact.

  @PaceCenterforGirls

 @PaceCenter

 @Pace-center-for-girls

 www.pacecenter.org



Find the Great in Every Girl.