

# VOICES OF CHANGE



## 2020 IMPACT REPORT



Find the Great in Every Girl.



# TABLE OF CONTENTS

3

100 Years — 100 Voices

4

A Letter from the CEO and Chair

5

35-Year Anniversary

6

COVID-19 Impact Report

8

Leadership

10

Impact Data

12

Financials

13

A Letter from the Chief Business Officer

16

Locations

19

A Letter from the Chief Operating Officer

20

A Letter from the Chief Advancement Officer

21

Donors

# ON THE COVER

100 Years



100 Voices

1920

2020



WOMEN OF THE MOVEMENT

The suffrage movement in the United States, that changed the lives of women, celebrated its 100th anniversary this year. Trailblazers that have helped pave the way for girls and young women include Eleanor Roosevelt, Melba Roy and Shirley Chisholm.

GIRLS OF PACE

At Pace, girls are provided opportunity to learn, grow, and lead, as they stand on the shoulders of these historical trailblazers. Our staff, volunteers, and donors support them on their journey to a bright future.

# 100 YEARS, 100 VOICES CAMPAIGN

As part of the 100 years, 100 voices campaign the Pace Polk center incorporated an art contest for their girls, using the prompt, “what does empowerment mean to you?”

“There are two types of females – quiet ones and those that advocate on behalf of others. My picture symbolizes two women who are using their voices to stand up for what is right. I hope to inspire others to speak out.” — ZP

ZP is in the 10th grade and has been at Pace Polk for three months. At Pace she has learned to find her voice, advocate on behalf of her peers and ensure the best for everyone. ZP is a strong leader and we are excited to see what she will accomplish in her future.







## LETTER FROM THE CEO & CHAIR

Dear Friends of Pace,

For Pace Center for Girls, as for all organizations, families, and individuals, 2020 was a year like no other. Looking back, 2020 seems like two separate years: how we lived and worked prior to March, and how drastically work and life shifted with the COVID-19 pandemic. Reflecting back over the last 12 months and, more importantly, looking to the future, this year's Impact Report reflects the incredible resiliency of our team members and our girls and families, and the generosity and dedication of our board members, donors, friends and volunteers.

Despite uncertainty, change and unprecedented challenges, our girls continued to thrive. Relying on our values and guiding principles through this time, we pivoted our focus from expansion into multiple states to ensuring our staff, girls and families were safe and supported and that they had access to services to meet their needs.

The pandemic has had and will continue to have an impact on public and private resources, and Pace has instituted financial safeguards to ensure ongoing continuity of services. With our priorities squarely focused on our girls, families, and team members, we are incredibly humbled by the new and innovative ways our communities have engaged to provide much-needed support in technology, food and basic needs for girls and families. This focus also required our teachers and counselors to quickly pivot to meet the social, emotional, behavioral, and academic needs of girls and families in a virtual world. Nationally, we are also faced with a period of great social unrest, and it is critical that Pace serve as a haven of support and understanding for our girls. Advocating for social justice is at the core of the Pace mission, and attention to the impact of racial inequities on both girls and team members has been and will continue to be a priority at Pace.

We are proud to share the academic and behavioral successes achieved by our girls this year. Our donors, board members, girls and staff have risen to the occasion, despite the tumultuous times. We have learned that being flexible, fluid, and agile has revealed new paths for expanding our work in Florida and beyond. With your continued support, what we have learned will benefit the future of Pace in ways we may have otherwise never imagined. From virtual board meetings to virtual meetings between our girls and elected officials on the issues of the day, we are grateful that with your support, we continue to find the great in every girl.

  
Mary Marx  
President & CEO

  
Billie Rawot  
Chair, Board of Trustees



## 35-YEAR ANNIVERSARY

Thirty-five years ago, Pace Center for Girls was founded in a church basement with 10 girls and the realization that there were no real options for girls involved with the juvenile justice system. Founded by Vicki Burke and guided by research calling for gender-responsive programming, Pace has grown to serve more than 40,000 girls and is recognized as a national model for reducing recidivism and improving school success, employment, and self-sufficiency by girls.

As we celebrate all of the accomplishments and achievements of the past 35 years, we honor those who worked, volunteered, and advocated for our girls. But most importantly, we celebrate every Pace girl who embraced growth and change to transform her life. Thank you for helping to find the great in every girl!



**1985**  
Vicki Bryant Burke opens Pace Center for Girls in Jacksonville at Snyder Memorial Methodist Church.





# COVID-19 IMPACT REPORT

In response to the COVID-19 global health crisis, 21 Pace centers across the state were able to transition nearly

2,000 GIRLS

100% innovative learning



1,700+ laptops deployed



96% attended academic classes weekly



80% received weekly counseling, case management and therapy



251 FAMILIES

received deliveries of food, water, cleaning and hygiene supplies



more than 900

donors stepped up to help our girls during this historic challenge – thank you!



## AALIYAH — PACE LEE

Aaliyah came to Pace in 2019 after a history of getting bullied and using unhealthy coping habits to overcome challenges. Shortly after enrolling, her mother and brother passed away within a month of each other. While at Pace, Aaliyah was able to find her voice as a member of the Pace Lee Girls Leadership Council, of which she went on to become president and statewide representative. She has become a mentor for new Pace girls arriving at the center, is a straight A student, and just recently became Pace Lee’s first dual-enrolled college student.

“DON’T EVER MAKE DECISIONS BASED ON FEAR. MAKE DECISIONS BASED ON HOPE AND POSSIBILITY. MAKE DECISIONS BASED ON WHAT SHOULD HAPPEN, NOT WHAT SHOULDN’T.”

MICHELLE OBAMA

Former First Lady of the United States

## MAEGAN — HERNANDO

When I started dealing with mental illnesses, it didn’t start with suicidal thoughts. It began with me dealing with my feelings of inadequacy. Soon I was at one of the worst times in my life. I felt helpless and just wanted something to make me feel better.

Shortly after my fourth Baker Act, I started going to Pace. This is where I started learning about what I was dealing with in a more precise way. Now, if I had the chance to go back in time to see my younger self, I would tell her, I wanted to know that someone saw me as being worthy of life. I couldn’t get better without putting in my part. I hope that by telling my story, I can make a difference for someone else – just like one of my middle school teachers and the Pace staff did for me.



“WE NEED TO MOVE BEYOND THE IDEA THAT GIRLS CAN BE LEADERS AND CREATE THE EXPECTATION THAT THEY SHOULD BE LEADERS.”

CONDOLEEZZA RICE

Former Secretary of State of the United States





# EXECUTIVE LEADERSHIP TEAM

**Mary Marx**  
President & CEO

**Thresa Giles**  
Chief Business Officer

**Yessica Cancel**  
Chief Operating Officer

**Teddy Thompson**  
Chief Advancement Officer



# BOARD OF TRUSTEES



**Billie Rawot**  
Chair  
Sr. VP and Controller,  
Eaton Corporation (ret)

**Jane Wexton**  
Vice Chair  
Chief Global Compliance Officer, GE (ret)

**Gordon Bailey**  
Secretary, Public Policy Chair  
Vice President, Government Affairs and  
Community Engagement, Florida Blue

**Mark Barnes**  
Treasurer  
CPA, DiBartolomeo, McBee, Hartley & Barnes

**Mark Snead**  
Immediate Past Chair  
Global Managing Partner, Accenture (ret)

**Keith Bell**  
Tampa/Southwest Division Community Development  
Manager–SunTrust Bank

**Mark Bennett**  
Southeast Region Executive for Business  
Bank of America

**Denise Cobb**  
Founding Trustee, Naples Children &  
Education Foundation

**Susan Davis**  
Senior Vice President–Gulf Coast–Sacred Heart Health  
System, Providence Hospital (ret)

**Nicole Decker**  
Vice President of Strategy, Tupperware

**Crystal Freed**  
Managing Partner & Community Advocate  
The Freed Firm, P.A.

**Louis Freeman**  
Senior Vice President, BB&T Community Development

**Karen Gallagher**  
Vice President, Human Resources and Learning,  
Brooks Health System

**Nadine Gramling**  
Principal, Gramling Enterprises, Inc.

**Greg Haile**  
President, Broward College

**Brittany Perkins Castillo**  
Chief Executive Officer, AshBritt Environmental

**Kerrie Slattery**  
Chief Advancement Officer, Cummer Museum

**Irene Sullivan**  
Juvenile and Family Court Judge, Florida’s 6th Judicial  
Circuit (ret)

**Debbie Toler**  
Southwest Florida Children’s Charities



# PACE CENTER FOR GIRLS

Pace provides year-round middle school and high school academics, case management, counseling, and life skills development in a gender-responsive environment.

3,000+  
girls served  
each year

40,000+  
girls served  
since 1985

22  
locations

# REACH PROGRAM SERVICES

Counseling, therapy, and case management program for girls who may not be able to attend a Pace Center, but who will benefit from high-quality therapeutic services within their school and communities.

13  
locations

980  
girls served



## BEFORE PACE

75%

**WERE FAILING** one or more classes prior to attending Pace



## OUTCOMES AND IMPACT

91%

**IMPROVED ACADEMICALLY** at Pace

19%

**HAD PRIOR INVOLVEMENT** with the juvenile justice system



95%

**HAD NO INVOLVEMENT** with the juvenile justice system **ONE YEAR AFTER COMPLETING PACE**

61%

**WE'RE SUSPENDED** or **EXPULSED**



94%

were in school, higher education, or employed **ONE YEAR AFTER COMPLETING PACE**

## BEFORE REACH

29%

Had prior involvement with the **JUVENILE JUSTICE SYSTEM**



## OUTCOMES AND IMPACT

95%

**HAD NO INVOLVEMENT** with the juvenile justice system **ONE YEAR AFTER COMPLETING PACE**

81%

Had **BEHAVIORAL CHALLENGES** associated with delinquency



99%

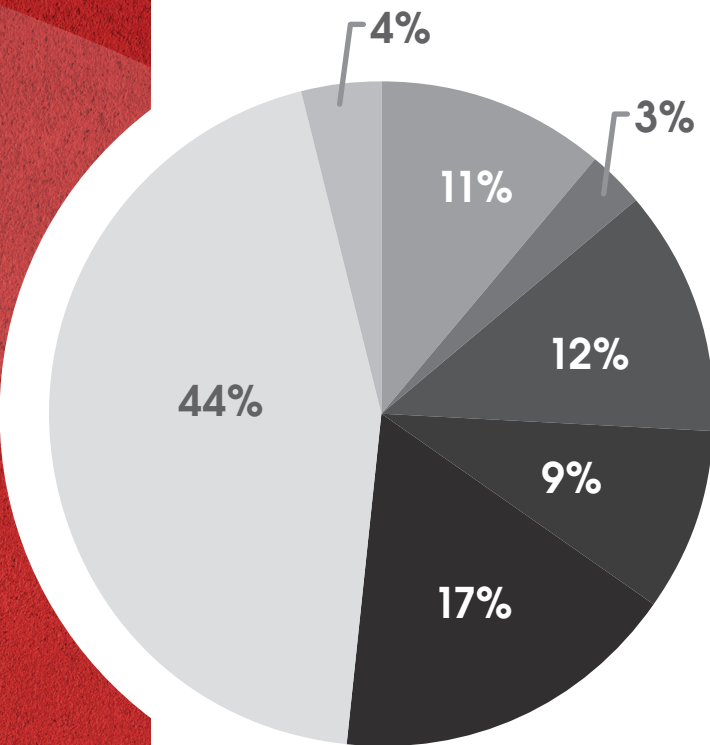
**HAD IMPROVED BEHAVIOR** associated with delinquency after Pace



# 2020 FINANCIALS

## REVENUE

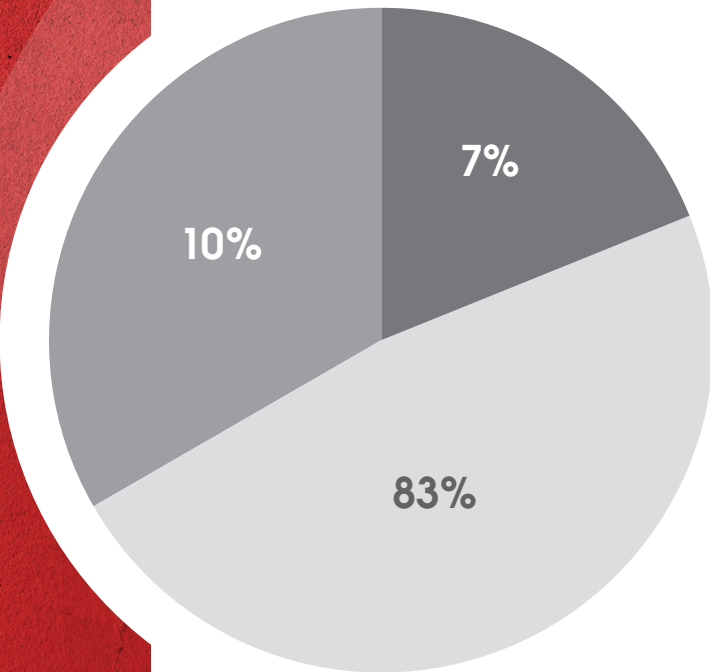
4%	Federal Grant
44%	Department of Juvenile Justice
17%	School Board
9%	Grants
12%	Contributions and In-Kind Donations
3%	Special Events
11%	Other Income



## EXPENSES

In FY 2020, our expenses were approximately \$45 million, of which 83% went directly to programs and services.

83%	Program Services
10%	Management & General
7%	Fundraising



## LETTER FROM THE CHIEF BUSINESS OFFICER



Dear Friends and Supporters,

At Pace, taking care of our girls is our top priority. That begins with our financial health and exceptional compliance processes to ensure the ultimate return on investment. The advent of COVID-19 dramatically changed the world around us and has shown just how important flexibility, planning and forecasting are to effective and efficient business operations. Over the last several years, Pace Business Operations has consistently focused on cost avoidance and effective technology infrastructure. This focus allowed us to quickly adjust and improve our business operations to better serve our staff and girls in new ways and under the new circumstances of 2020.



Being prepared is vital, but being adaptive, flexible, and agile is equally important in an ever-changing environment. Our team members and our girls have truly shown an enormous amount of resilience during this unusual time.

For the last 10 years, we have strategically invested in advanced technology, compliance, risk management, quality control and business intelligence systems. These investments allowed Pace to quickly transition to a virtual learning environment that met compliance standards. Our girls and staff were able to continue to learn, work, and receive the support needed during this unprecedented time.

I am extremely proud that during this time of uncertainty for a number of nonprofit organizations, Pace was able to avoid reductions in staff and, most importantly, seamlessly provide critical support to our girls. Our planning helped us to withstand delays and uncertainty in state and federal funding. Strategic planning and strong partnerships allowed us to close the digital divide for our girls by providing computer equipment and internet access to ensure they would be successful in a virtual environment.

### Adapting our business practices led to positive outcomes:

- The Risk and Compliance teams developed a quality management system that allowed for a seamless transition to internal monitoring and our girls' safety in a virtual environment.
- The Technology team deployed more than 3,000 devices to close the digital divide for our girls.
- The Compliance team developed protocols using CDC recommendations for the safety of our staff and girls.
- Finance and Advancement operations created a new, secure and more efficient transaction processing and management system.
- We leveraged various software platforms and data sources with business intelligence to develop a comprehensive and more efficient reporting system for all of Pace.

2020 created lasting changes that will alter how we manage our work going forward. The changes will leave Pace an even stronger leader of innovation in the nonprofit sector. We embrace growth and change on all levels at Pace, never changing the focus on our mission to find the great in every girl.

*Theresa Giles*

Theresa Giles  
Chief Business Officer





“LIVING OUT LOUD IS NOT PLAYING ANNALISE KEATING ON *HOW TO GET AWAY WITH MURDER*, IT'S NOT BEING AMANDA WALLER IN *SUICIDE SQUAD*, IT'S NOT GETTING AN OSCAR. LIVING OUT LOUD IS LIVING A LIFE THAT'S BIGGER THAN YOURSELF. LIVING OUT LOUD IS LONG AFTER YOU'RE GONE... YOU LEAVE SOMETHING ON THIS EARTH THAT'S BIGGER THAN YOURSELF.”

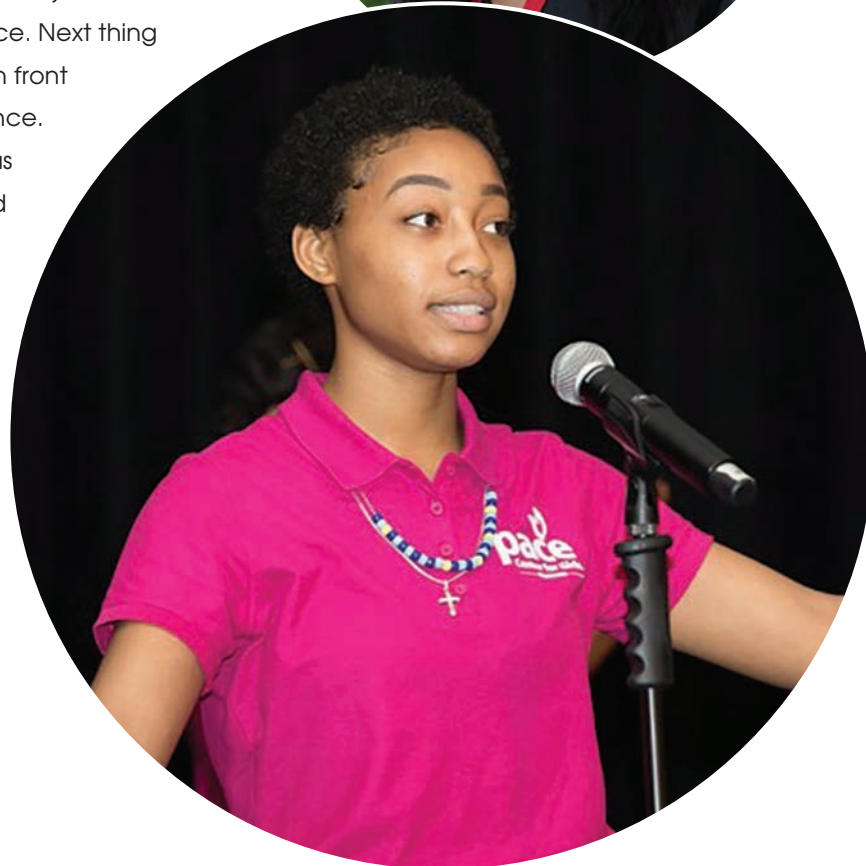
Viola Davis

American actress



#### AZIYAH — PACE BROWARD

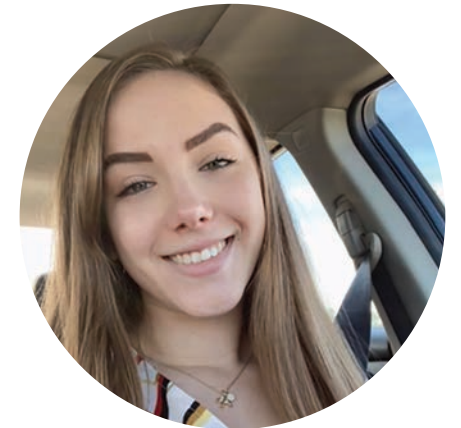
Before coming to Pace Broward, I hated school. I struggled a lot with depression and had recently dropped out of 10th grade. Even when I started at Pace, I wasn't a big fan of school. But all that changed in February of 2018 when I joined a dance group for a Black History Month performance. Next thing you know, I was center stage, performing in front of people for almost every Pace performance. Thanks to my teachers and counselors, I was able to handle my depression, and I started to focus on my grades. In July, I graduated as part of the Class of 2020, and now I'm pursuing a career in acting and modeling. Since graduation, my Reach therapist has been helping me stay on track with my goals. Thank you, Pace!



#### KATIE — PACE CLAY

Pace gave me a bright future when I would not have otherwise had one. Instead of running the streets, Pace helped land me my first job, and I received a bicycle to get there. With the help of counselors and teachers, I reversed my self-harming behaviors and found my voice.

Today I'm 20, enrolled in college, working two jobs, and getting ready to move into my first apartment on my own. Even though I graduated from the Pace program two years ago, I still rely on a safety net of people I call my best friends, family and angels. These folks work tirelessly to fill critical gaps, like transportation to work, navigation through college requirements, and the motivation necessary to build my self-confidence and believe in myself.



“YOU ARE NOT BORN WITH A FIXED AMOUNT OF RESILIENCE. LIKE A MUSCLE, YOU CAN BUILD IT UP, DRAW ON IT WHEN YOU NEED IT. IN THAT PROCESS YOU WILL FIGURE OUT WHO YOU REALLY ARE — AND YOU JUST MIGHT BECOME THE VERY BEST VERSION OF YOURSELF.”

Sheryl Sandberg

COO of Facebook and author of *Lean In: Women, Work, and the Will to Lead*.

#### DESIREE — PACE PINELLAS

At night, women would go home marching for their rights to vote as they chant their sayings, so everyone knows that they won't give up until they get their rights. There is region of equality spreading through the night as they sleep and wake up for the next day to happen as clouds start to appear and hide the sun on the darkest day. They will not rest until they finally get their rights, and as days turn into nights, men start to wonder what their wives were thinking in their sleep when they were away for war. This is a night to remember as women keep marching for their rights.

— 100 YEARS, 100 VOICES SUBMISSION



“EACH TIME A WOMAN STANDS UP FOR HERSELF, WITHOUT KNOWING IT POSSIBLY, WITHOUT CLAIMING IT, SHE STANDS UP FOR ALL WOMEN.”

Maya Angelou

American poet, memoirist, and civil rights activist





# COMMUNITY LOCATIONS & CONTACTS

- NATIONAL OFFICE**  
**Mary Marx, President & CEO**  
Pace Center for Girls, Inc.  
6745 Philips Industrial Blvd.  
Jacksonville, FL 32256

**ALACHUA**  
**Natalya Bannister, Executive Director**  
Pace Center for Girls, Alachua  
1010 SE 4th Ave.  
Gainesville, FL 32601

**BROWARD**  
**Aggie Pappas, Regional Executive Director**  
Pace Center for Girls, Broward  
2225 N. Andrews Ave.  
Wilton Manors, FL 33311

**CITRUS**  
**Carole Savage, Regional Executive Director**  
Pace Center for Girls, Citrus  
3630 W. Educational Path  
Lecanto, FL 34461

**CLAY**  
**Destani Shadrick, Executive Director**  
Pace Center for Girls, Clay  
1241 Blanding Blvd., Suite 5  
Orange Park, FL 32065

**COLLIER at Immokalee**  
**Marianne Kearns, Executive Director**  
Pace Center for Girls, Collier at Immokalee  
160 N. 1st St.  
Immokalee, FL 34142

**ESCAMBIA-SANTA ROSA**  
**Laurie Rodgers, Regional Executive Director**  
Pace Center for Girls, Escambia-Santa Rosa  
1028 Underwood Ave.  
Pensacola, FL 32504

**HERNANDO**  
**Gail Armstrong, Executive Director**  
Pace Center for Girls, Hernando  
3139 Dumont Ave.  
Spring Hill, FL 34609

**HILLSBOROUGH**  
**Davia Lerebours, Executive Director**  
Pace Center for Girls, Hillsborough  
1933 E. Hillsborough Ave., Suite 300  
Tampa, FL 33610

**JACKSONVILLE**  
**Kimberly Reed, Executive Director**  
Pace Center for Girls, Jacksonville  
2933 University Blvd. N.  
Jacksonville, FL 32211

**LEE**  
**Meg Geltner, Executive Director**  
Pace Center for Girls, Lee  
3800 Evans Ave.  
Ft. Myers, FL 33901

**LEON**  
**Laurie Rodgers, Regional Executive Director**  
Pace Center for Girls, Leon  
311 E. Jennings St.  
Tallahassee, FL 32301

**MANATEE**  
**Amy C. Wick Mavis, Executive Director**  
Pace Center for Girls, Manatee  
3508 26th St. W.  
Bradenton, FL 34205

**MARION**  
**Carole Savage, Regional Executive Director**  
Pace Center for Girls, Marion  
328 NE 1st Ave., Suite 500  
Ocala, FL 34470

**MIAMI**  
**Sherry Thompson Giordano, Executive Director**  
Pace Center for Girls, Miami  
1400 NW 36th St., Suite 200  
Miami, FL 33142

**ORANGE**  
**Rosene Johnson, Executive Director**  
Pace Center for Girls, Orange  
445 N. Wymore Road  
Winter Park, FL 32789

**PALM BEACH**  
**April Brownlee, Executive Director**  
Pace Center for Girls, Palm Beach  
1640 S. Congress Ave.  
Palm Springs, FL 33461

**PASCO**  
**Gail Armstrong, Executive Director**  
Pace Center for Girls, Pasco  
7545 Little Road  
New Port Richey, FL 34654

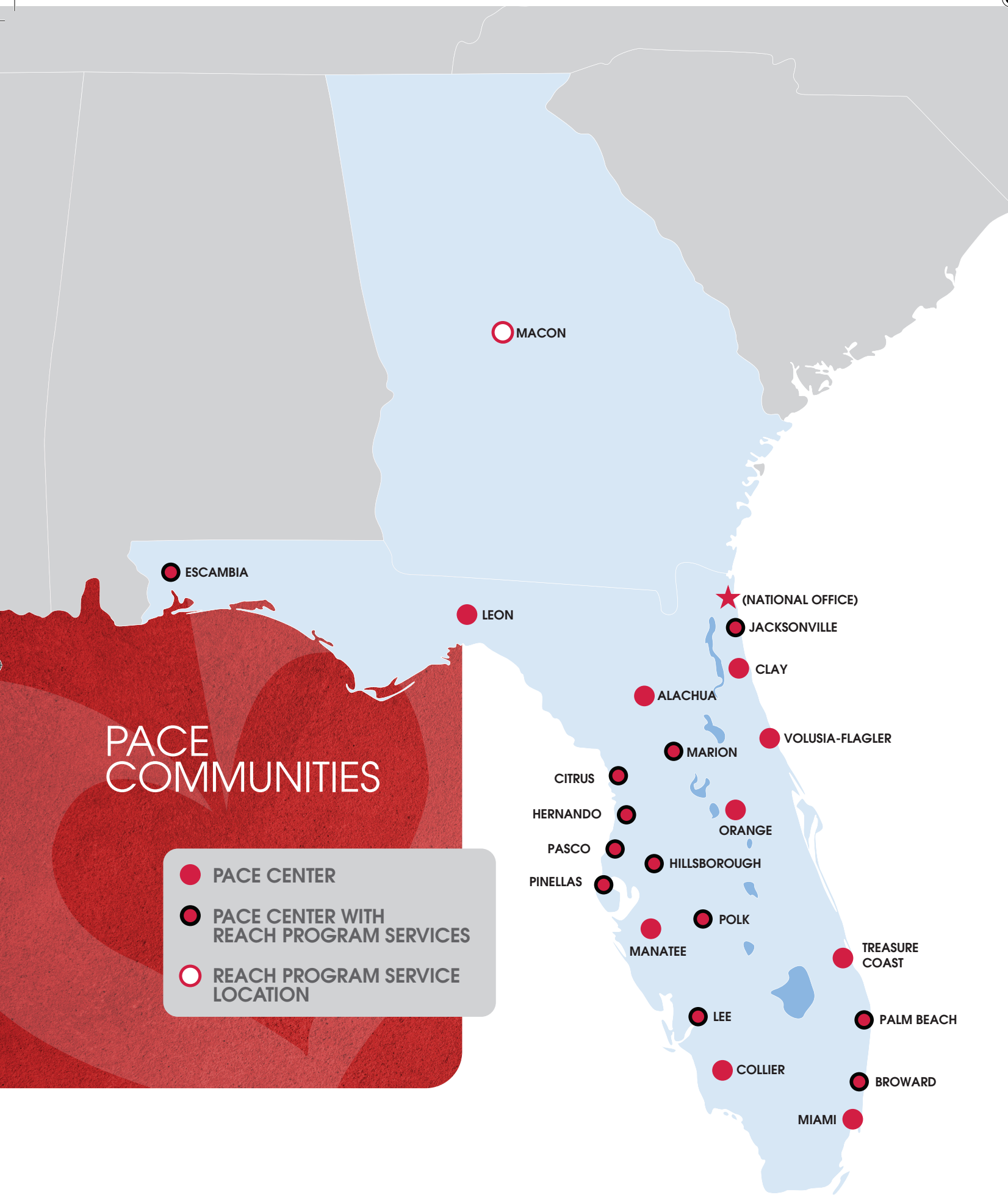
**PINELLAS**  
**Chantell Miles, Executive Director**  
Pace Center for Girls, Pinellas  
4000 Gateway Center Blvd. N., Suite 400  
Pinellas Park, FL 33782

**POLK**  
**Ellen Katzman, Executive Director**  
Pace Center for Girls, Polk  
213 Tyler Ave.  
Lakeland, FL 33801

**TREASURE COAST**  
**Maygan Johnson, Executive Director**  
Pace Center for Girls, Treasure Coast  
3651 Virginia Ave.  
Ft. Pierce, FL 34981

**VOLUSIA-FLAGLER**  
**Sheila Jordan, Executive Director**  
Pace Center for Girls, Volusia-Flagler  
208 Central Ave.  
Ormond Beach, FL 32174

**MACON**  
**Laurie Rogers, Regional Executive Director**





“I’VE BEEN ABSOLUTELY TERRIFIED EVERY MOMENT OF MY LIFE—AND I’VE NEVER LET IT KEEP ME FROM DOING A SINGLE THING I WANTED TO DO.”

Georgia O’Keeffe

painter often recognized as the “Mother of American modernism”



### DESIREE T. — PACE JACKSONVILLE

Each spring, the Congressional Institute sponsors a nationwide high school visual art competition to recognize and encourage artistic talent in the nation and in each congressional district. Winners are recognized both in their district and at an annual awards ceremony in Washington, DC. The winning works are displayed for one year at the U.S. Capitol. This year, Desiree’s was the winning entry in her district.

“Before coming to Pace, I struggled with my mental health, and I was failing my classes,” she said. “At Pace, I have been able to improve my academics. Staff are patient and always willing to help me. My counselor and therapist are nice, and I am able to discuss how I am feeling on days when I need someone to talk to. Pace has given me opportunities to explore my artistic abilities and to advocate for myself.”



## LETTER FROM THE CHIEF OPERATING OFFICER

Dear Pace Friends,



As I pause to reflect upon the past year, I am reminded about the power of the human spirit. This year has tested our humanity, and I am humbled as I take in the resiliency demonstrated by our girls, the unwavering commitment of our team members, and the enduring support of our communities, partners, and friends. We truly lived our Values & Guiding Principles and allowed our culture of purpose, caring, learning, and results to drive how we responded to some of the biggest challenges we have ever faced. We continue to make a difference in the lives of girls across our communities through innovative approaches in the delivery of our services.



The safety of our girls and team members across the state is our priority. Pace was able to quickly pivot to convert all services across the state to virtual platforms. This included both our day program and Reach. More than 1,700 laptops were deployed, access to the internet was provided where needed, and Pace teachers, counselors, and therapists were provided with resources to help manage this transition and quickly adapt to the stay-at-home order. In addition to adapting to an entirely new way of working and supporting our girls with classes, case management and counseling, team members conducted drives for food and supplies that girls would normally receive at our centers, made physically distanced home visits, and celebrated achievements with car parades and outdoor or virtual graduation ceremonies.

As a team, we focused on caring for ourselves so that we would be able to care for our girls. Solid financial planning and prudent adjustments enabled us to provide job security for all Pace team members, and while benefits enrollment went virtual, telehealth and employee assistance programs ensured our team members’ physical and mental health.

As part of our learning culture, Pace has been focused on activities to understand and overcome unconscious bias in our work and in the world around us. The social unrest of the past few months inspired us to continue this work with Culture Circles for staff and Healing Circles for our girls. We came together to listen to one another, comfort one another, and continue on a collective journey to positively impact one another and our communities.

Reopening our centers depended greatly on input from our girls and families, team members, school districts, community leaders and, most importantly, the data and science of safety during the pandemic. Through a series of surveys and sharing of best practices, our centers have established new routines and methods for caring for girls, and we will continue to learn and evolve in this new normal.

We continue to be focused on results for our girls. From April–June, Pace girls achieved significant gains in academic improvement:

- 88% achieved academic improvement vs. 70% during the same period in 2019
- 89% earned high school credits vs. 77% during the same period in 2019

This success inspires us to respond to the changes in our world with continued reliance on our Values and Guiding Principles and investment in the future. We are grateful for the foundation that empowers us to create results that have a lasting impact on our girls and in our communities.

*Jessica Cancel*

Jessica Cancel  
Chief Operating Officer







## LETTER FROM THE CHIEF ADVANCEMENT OFFICER

Dear Friends and Supporters,

Sometimes our greatest challenges can turn into our greatest opportunities. The past year has certainly presented Pace, and our world, with some of the most significant challenges we have faced since our founding 35 years ago. And as I reflect on this year, I can't help but think about our girls and how they strive to overcome adversity and realize their success every day.

Girls like, Lizandra who completed Pace in 2019 and recently graduated from high school. Liz was bullied through middle school and blamed herself for her parents break up. She sought help at school, but things started to spiral personally and academically. In 2017 a high school official suggested Pace. At Pace Liz was able to get to the root of her depression, refocus and improve academically. She started classes at Florida Southwestern State College this fall, where she plans to obtain an associate degree in Pediatric Oncology. Liz says she found her voice at Pace and will continue to use it to further her very bright future.

The power of Pace has never been more evident in our girls, team members and our supporters than I have witnessed this past year. We have all demonstrated a resilience that allowed us to see a strength and fortitude we may not have realized we had. From finding ways to support girls and their families with basic necessities like food and hygiene products, to providing technology to close the digital divide for our girls to ensure their support and learning would not be disrupted, our entire team has flexed in amazing ways and we have created some amazing new partnerships, with organizations like the No Kid Hungry Foundation and United Healthcare.

Our supporters and donors never cease to amaze me with their generosity, especially during a time of such uncertainty. More than 900 donors stepped up to provide financial support this past spring to provide technology and food to our girls and their families. Even more remarkable was that more than 70% of these donations came from first time donors to Pace. We have had to shift to virtual ways to connect with our supporters who continue to stand by our girls and help them find their greatness.

We have remained and will continue to remain steadfast in our mission to help our girls realize the power of their voices. For the past 100 years we have seen the power of women's voices in our society from the Suffragette Movement, to Civil Rights, to #MeToo and Black Lives Matter. We have come very far but have much further to go. With your help in supporting girls and young women overcome past challenges and find their voices, you can help the next generation of leaders, mothers, teachers, and advocates become change makers for a better future.

  
Teddy Thompson  
Chief Advancement Officer

## DONORS

We greatly appreciate each gift given in support of Pace, and we have made every effort to ensure the accuracy of this listing. We regret any errors. \* Giving Society \*\* Includes in-kind donations \*\*\* Shared donors

### NATIONAL OFFICE \$1,000,000 & ABOVE

Deerbrook Charitable Trust

### \$250,00-\$999,999

Florida Blue Foundation  
NoVo Foundation  
The Office of Juvenile Justice and Delinquency Prevention  
UnitedHealthcare\*, \*\*\*

### \$150,000-\$249,999

Cigna Foundation\*, \*\*\*  
Michael Ward and Jennifer Glock Foundation

### \$100,000-\$149,999

Foundation CHANEL, Inc.

### \$50,000-\$99,999

Fund for Shared Insight  
Share Our Strength's No Kid Hungry Campaign\*\*\*

### \$25,000-\$49,999

AT&T  
The Krystal Company  
The Ultimate Software Group, Inc.

### \$10,000-\$24,999

Benevity Community Impact Fund  
Billie & John Rawot\*  
Circle of Friends Foundation/  
Mark & Joanne Sneed\*  
Deborah & Bill Toler  
Nadine Gramling\*  
Nicole & Jason Decker  
Sherrill & Jimmy Ragans\*  
The Charles R. Burke Charitable Fund  
The Winston Family Fund  
Tupperware Brands Corporation\*\*

### \$5,000-\$9,999

Arby's Foundation  
BB&T Charitable Fund  
Enterprise Holdings Foundation  
Gray-Robinson, Attorneys at Law  
Mary Marx & Mike Fitch\*\*\*  
Susan Davis & Richard J. Henley  
The Bailey Group  
UPS Foundation, Inc.

### \$1,000-\$4,999

Arthur & Allison Dobosiewicz  
Bright Funds  
Cisco  
CSX Transportation  
Cynthia & James Montgomery\*  
Deborah Lamir  
Elizabeth & John Ackermann  
Law Offices of Ron Sholes, P.A.  
Mark & Renee Barnes\*  
Mark & Gail Bennett  
Mike & Crystal Freed Family Fund  
Ponte Vedra Beach Rotary Club  
Teddy Thompson\*\*\*

Terri Wilsie  
Theresa Giles\*\*\*  
United Nations Foundation  
Yessica Cancel\*\*\*

### \$500-\$999

Amazon Smile  
Ameriflex  
Bree Hartlage  
Jada Foundation  
Kerrie Slattery & Paul Lambert  
New York Life Foundation\*  
Nocatee Mavens  
Regina & Fred Faura  
Rosalie Smith  
The Sakonyi Wade Family Fund  
Triune Technologies, Inc.  
United Way

### ALACHUA

\$50,000-\$99,999  
Anonymous

### \$25,000-\$49,999

Alachua County Board of County Commissioners  
Anonymous\*

### \$10,000-\$24,999

Bill and Celia Burger\*  
Boshardt Charitable Fund, Inc.  
Dharma Endowment Fund  
Dorie Stein\*  
Michael Singer  
Mr. Churchill  
Steve and Wanda Tuttle\*  
Taste of Greater Gainesville, Inc.  
United Way of North Central Florida

### \$5,000-\$9,999

Bridget and John Fleming  
Dr. and Mrs. Curt DeGroot\*  
Gainesville Regional Utilities  
Kathleen and Fred Southwick\*  
Pamphalon Foundation, Inc.  
Publix Super Markets Charities, Inc.\*

### \$1,000-\$4,999

Adriane Isenberg  
Amy Murad  
Anamaria R. Yeung\*  
Andrea Lister\*  
Angela Jacobs\*  
Anita Altschuler  
Ann B. Boyd  
Ann Ives  
Ann Marie Rogers\*  
Anna Murillo\*  
Anna Olcese\*  
Barbara Hall\*  
Bill Cervone  
Brenda Pickens  
Bryce A Burger Landscape, LLC  
Buffa Blanchet  
Carole and Bill Zegel\*  
Carr Specialty Bait, Inc.  
Chacon Diaz and Di Virgilio, LLC  
Cherie Fine\*

Christine Riggs\*  
Claudia Wilson  
Davis Rembert  
Dawn Johnson  
Dawn Kraft\*  
Destin Williams  
Diane and Jim Bacus\*  
Dorene and Jack Ross  
Dr. Kayser Enneking and Dr. Mark Scarborough\*  
Dr. Richard Oliver  
Ellen M. Zimmerman  
Emily and Phillip Pritchett\*  
Emily Humphreys-Beher  
Faun Carlson  
First Federal Bank  
Folds & Walker, LLC  
Fraternal Order Of Eagles  
Gladys Cofrin  
Heather and Kelley Jones  
Holy Trinity Episcopal Church  
Jack and Dorene Ross  
Jack Martin  
James and Lee Salter  
James and Leslie Nilon  
Jamie Vascotto  
Jill Freedman  
Joanne and David Kremer\*  
Joanne Kremer\*  
John & Kathy Kish Family Charitable Fund  
Joseph Parra\*  
Kail Partners, LLC  
Kathleen and John Kish  
Lauren Douglass  
Lee and James Salter  
Leslie and James Nilon\*  
Lucky's Market  
Magda Riutort  
Mailande Holland\*  
Margaret Crawford\*  
Mary Ann Williams  
Mary K. Wimsatt\*  
Mary Sanford  
Mary Trew  
Michael and Tammy Prince  
Michael Welker\*  
Mount Carmel Baptist Church  
Ms. Laura Martin  
Naima Brown  
North Florida Cancer Institute II LLC  
Northwestern Mutual Foundation  
Prince Medical, Inc.  
R & D Smith Fund  
Rana Schaefer  
Regal Foundation  
Rich and Michelle Ropp  
Robert and Carol Gwin  
Rod and DeeDee Smith\*  
Shey Charitable Foundation, Inc.  
Stacy Scott  
Stephanie Frank\*  
Steve and Catherine Price\*  
Studio 32 Orthodontics  
Tammy and Michael Princ.e\*  
Tania Alavi  
The Gladys C. Cofrin and Daniel Logan Fund  
Tracy and Bryce Burger\*  
Trinity United Methodist Church

UF Professor Auction  
Vicki Santello\*  
VSMS Property Management LLC  
Walmart Foundation  
Weyerhaeuser Foundation  
Yajaira Krop

### \$500-\$999

Amy Simonne  
Andres Bhatia  
Anne Stricklin  
Atlantic Design & Construction LLC  
Benjamin French  
Brent and Naomi Williams  
Brian Kramer  
Carissa and Richard Blaser\*  
Celia and Bill Burger\*  
Cheryl and Ester Calhoun  
Cheryl Calhoun  
Christy Meisenbach  
Cynthia Croushore  
Dorene and Scott Webster\*  
Elizabeth Barbao  
Elizabeth Davis  
Elta L. Johnston  
Emily and Stuart Ziegler  
Ester de Jong  
Frank and Stephanie Davis  
Gail and Eric Brill\*  
Gainesville Charitable Foundation, Inc.\*  
Heather Doughton  
Herbert E. Jones  
Herrington Ventures, LLC  
Hitchcocks Charity Foundation  
Janet Onnie  
Jeannette MacFadden  
Jennifer and Anthony Sabile  
Jessica Norfleet  
Joanna Wanzenberg Leathers  
John and Maderica Bacon\*  
Karl Bullock  
Kelly and Matthew Gurka  
Kimberly Petersen  
Kristine Lier  
Linda Abeles  
Lynn and Tony Domenech  
Marcia L. Eubank  
Marge Deardourff  
Marjorie Drummond  
Martha Lott  
Mary and Mark Wise\*  
Michael Joseph  
Naomi Williams  
North Florida Woman's Physicians of Gainesville, LLC  
Pat Hagen  
Penny and David Jones  
Rachel and Adam Alty  
Rich and Carissa Blaser  
Robell Charitable Fund  
Sandra Olinger  
Scott and Dorene Webster  
Shannon Wells  
Sharron and John Poppell  
Stephanie and Frank Davis  
Susan and Paul Robell  
Tara Blythe  
The U.S. Charitable Gift Trust  
Tri-County Unitarian Universalists  
Yoriko and William Stasiewicz

### BROWARD

\$250,000-\$999,999

Children's Services Council of Broward\*

### \$150,00-\$249,999

Community Foundation of Broward\*

### \$100,00-\$149,999

Mary N. Porter Community Impact Fund\*  
The Frederick A Deluca Foundation\*

### \$50,000-\$99,999

Cigna Foundation\*, \*\*\*  
Ultimate Kronos Group (UKG)\*  
UnitedHealthcare\*, \*\*\*  
United Way of Broward County\*

### \$25,000-\$49,999

Amaturo Family Foundation\*  
Bank of America Charitable Foundation, Inc.\*  
Broward College\*  
Florida Panthers Foundation\*  
John Ulbrich Charitable Trust\*  
Leo Goodwin Foundation, Inc.\*  
Linda Rogers\*  
Rick & Rita Case\*  
Sam Berman Charitable Foundation Inc.\*  
The Starbucks Foundation\*

### \$10,000-\$24,999

4 Girls Foundation, Inc.\*  
Anonymous\*  
Bank of America\*  
BankUnited\*  
Broward Sheriff's Office (BSO)\*  
CenterState Bank\*  
Citrix\*  
Donald C. Grobmyer Fund\*  
Francis J. Crowley Fund\*  
GCI Worldwide Corp/Giselle Cheminand\*  
Gore Family Memorial Foundation Trust\*  
Jerry Taylor and Nancy Bryant Fund\*  
Menendez/Corban Fund of the Community Foundation of Broward\*  
Rosemary Duffy Larson Trust\*  
Sheila Bechert\*  
The Janoura Group, Inc.\*  
The Jones Family Foundation\*  
Walgreens\*  
Young At Art Museum\*, \*\*

### \$5,000-\$9,999

Appleseeds Foundation Fund\*  
Cathy and James Donnelly Family Fund\*  
Children's Opportunity Group, Inc.\*  
Karen and Joe O'Byrne\*  
Kiwanis Club of Fort Lauderdale Charitable Fund\*  
Lynda Napolitano\*  
Memorial Healthcare System\*  
Modernizing Medicine\*  
Penelope Blair\*  
Publix Super Markets Charities, Inc.\*





Ryder Charitable Foundation\*  
Sadaka Family Charitable Fund\*  
Schwab Charitable\*  
Shutts & Bowen, LLP\*  
Suzette Bravo\*, \*\*  
The Community Foundation Harrisonburg-Rockingham\*, \*\*  
The Vicino Family Charitable Fund\*  
TriSpark Media Group, Inc.\*

**\$1,000-\$4,999**

Aggie Pappas\*  
Allison Brimmer\*  
Allyson Kayton\*  
Andrew & Allison Cagnetta\*  
Ayo Tillman\*  
Bank of America Employee Giving Campaign\*  
BBX Capital Foundation\*  
Blue Martini Galleria, LLC\*  
BNY Mellon\*  
Bryant Security Corp.\*  
Capital One\*  
Carman Law Firm, P.A.\*  
Centennial Bank\*  
Cherry Bakaert LLP\*  
Childrens Aid Club\* \*\*  
Christine & Andrew Gumberg\*  
Cindy Schutt\*  
City of Wilton Manors\*  
Coldwell Banker Residential Real Estate CARES Foundation\*  
Cynthia Azar\*  
Danielle Grace\*  
Darran Blake\*  
Daughters of Penelope Narcissus Chapter 289\*  
Dollar General Literacy Foundation\*  
DPR Foundation\*  
DxWeb\*  
Erica Stowers\*  
Ernst & Young U.S. LLP\*  
Florida Power & Light Company\*  
Florida Virtual School\*  
Fort Lauderdale Alumnae Panhellenic\*  
Fort Lauderdale Business and Professional Women's Club\*  
Harry T. Mangurian, Jr. Foundation, Inc.\*  
James Wolff\*  
Jane Wexton & Marvin Pickholz\*  
Jay Feldman\*  
Jené Kapela/Kapela Leadership Solutions\*  
Jennifer O'Flannery Anderson and Peter Anderson\*  
Jessica Sudnykovich\*  
JM Lexus\*  
John Gordon Bull Fund\*  
Jones Lang Lasalle\*  
Katandy, LLC\*  
Kathleen Thomsen\*  
Kendra Scott, LLC\*  
KPMG\*  
Kristin & Richard Coker\*  
Kubicki Draper\*  
Lamoti Inc.\*  
Legacy Wealth Management\*  
Lexus Pursuit of Potential\*  
Linda and Hon. Bill Haury\*  
Lou and May Jean Wolff Family Foundation Fund\*  
Malcolm MacInnes\*

Marcum LLP\*  
Mary-Jane Graff\*  
Meike & Dominick Miniaci\*  
Michael & Becky Humphrey\*  
Mink & Mink Inc.\*  
Mombach, Boyle, Hardin & Simmons P.A.\*  
Nikki & Timothy Ermatinger\*  
Niroc Consultants, Inc.\*  
Nova Southeastern University\*  
Pauline & Richard Brodeur\*  
Penniman Foundation Inc.\*  
People Services\*  
Pompano Beach Rotary Fund, Inc.\*  
Recovery Unplugged\*  
Renee Peterson\*  
Richard Ingham  
Ruth & Randy Friedlander\*  
Sandra & Peter Nori\*  
Sara Rashli\*  
Sarah & Steve Petri\*  
Seiler, Sautter, Zaden, Rimes & Wahlbrink\*  
Setnor Byer Bogdanoff, Inc.\*  
Shannon & Matt Korshoff\*  
Shay Ben-David/Bryant Security\*  
Sheila Pettis\*  
Silicon Valley Bank\*  
Sonali & Chris Garvin\*  
Soroptimist International of Davie\*  
Stacy Schwartz\*  
Starbucks Foundation: Neighborhood Grants Fund\*  
Strong Heart Events (S.H.E.)\*  
Sunem Beaton-Garcia & Carlos Garcia\*  
Susan & Jack Loving\*  
Susan & Joel Martin\*  
Suzie & Laurence Maurer\*  
The Allstate Foundation/Rose White\*  
The Farver Foundation\*  
The Friedlander Group at Morgan Stanley Smith Barney, LLC\*  
The Jonathan S. and Patricia G. England Foundation\*  
The Lozick Family Foundation\*  
Trustpoint International, LLC\*  
Wartsila North America, Inc.\*  
Wawa, Inc.\*  
Wealth Solutions Partners\*  
Will Spencer\*  
Womens Fund\*  
Woolf Realty\*

**\$500-\$999**

AC Police  
Caren Berg  
Carosella Family Foundation  
Chae & Greg Haile  
Doug Schneider  
Fred Hamill/Hamill's Home and Auto Supply, Inc.  
Gale and Todd Butler Family Fund  
Gina Conti  
Hon. Giuseppina Miranda  
Howard Kurzweil (In Honor of Jane Wexton)  
Janie Finizio Bascombe & Timothy Bascombe  
Jane & Gilbert Pomar  
Jodi Epstein  
Junior League Boca Raton  
Kaley Miller  
Kendall Sharp & Ann-Marie van der Velde

Kourtney Dever  
Laura Varela  
Lauren Gallart  
Lynne Wines  
Mary Sanchez  
Muriel T. & Walter "Skip" Campbell Memorial Fund  
Ninowtka Mier & Dave Soika  
Nora & Steven Weiss  
Ray Fleischmann  
Ride Element  
Robert Birdsong  
Robyn Tauber  
Simply Healthcare Plans  
Steve Einhorn  
Viki McCright

**CITRUS**

**\$50,000-\$99,999**  
Citrus County Hospital Board

**\$5,000-\$9,999**

Kids Central, Inc.

**\$1,000-\$4,999**

Best Florida Fest  
Elwood Harding  
Insight Community Foundation, Inc.  
Amscot Corporation  
Antoinette St. Martin  
Citrus County Chamber of Commerce  
Citrus County Detention Facility  
Sheila A. Jordan

**CLAY**

**\$10,000-\$24,999**  
Clay Electric Cooperative, Inc.  
Orange Park Medical Center

**\$5,000-\$9,999**

Bridget Roberts\*

**\$1,000-\$4,999**

Alayna Summanen, LLC\*  
Anna Lebesch\*  
Berkshire Hathaway Home Services  
bestbet Orange Park  
Carole Gardner\*  
CBV Cares, Inc.  
Chris & Deborah Glenn\*  
Clary & Associates\*  
Coastal Spine and Pain Center  
Destani Shadrick\*  
Elaine Cassala\*  
Elizabeth Wonpat\*  
Family Matters of Florida, LLC  
Fidelity Charitable  
Florida Blue Foundation  
Gordon & Lynn Bailey\*  
Greta Dupuy\*  
Hagan Ace Hardware  
Hope Schiller\*  
James Kaelin\*  
John Ward\*  
Lisa Dease\*  
Lucky's Market  
Mary Marx & Mike Fitch\*  
Mona Gardella\*  
Ollavan Brown\*  
Publix Super Markets Charities, Inc.\*  
Rotary Club of Orange Park

Russell & Jan Buck\*  
Sam Garrison Campaign\*  
Taber Corporation  
Telecom Pioneers  
The GoodCoin Foundation  
The Keating Family Giving Fund\*  
UMMID - A Hope Foundation  
United Way of Northeast Florida  
VyStar Credit Union  
Wendy Norfleet\*

**\$500-\$999**

Ameris Bank  
Anthony Bonk  
Beth Linder  
Bryan & Sarah Campbell\*  
Caroline Tingle\*  
Carrie & Chad Patrick\*  
Clay County Medical Society  
Clay County Sheriff's Office  
David King  
Denise Boykin  
Esther Nichols  
Gordon Chevrolet Orange Park  
Ismael Rodriguez\*  
Jane Diloreto\*  
Judy Fields\*  
Kat Wetmore  
Keri & Justin Deaton  
Kristina Mobley  
KT Carter Contracting  
Main Street Site Utility, LLC  
Michelle Cook  
Partridge Well Drilling Company, Inc.  
Patrick & Jennifer Nolan  
Prodigi, LLC  
Rotary Club of Green Cove Springs  
The Heritage Bank  
Van and Sandra Royal  
Working For Florida's Families

**COLLIER**

**\$50,000-\$99,999**  
Bill and Kathy Avery Charitable Fund  
Naples Children & Education Foundation

**\$25,000-\$49,999**

Clark Family Foundation, Inc.

**\$10,000-\$24,999**

4 Girls Foundation, Inc.  
ABC7\*\*  
Arthrex, Inc.  
Clive Daniel Home\*\*  
Coconut Point/Simon Mall\*\*  
Denise Cobb  
Elizabeth K. Galeana Charitable Foundation, Inc.\*  
Executive Womens Golf Association SWFL Chapter\*  
Give Where You Live Fund  
Goodwill Industries of SWFL\*\*  
Green Heron Fund\*  
Julie and Jeffery Diermeier  
Katherine's Collection\*\*  
MidWestOne Bank  
Sara Campbell\*\*  
The ROS Foundation

**\$5,000-\$9,999**

Charlie McDonald Photography\*\*  
Greta Dupuy

Joanne Jacobs\*  
Kristin Cartwright  
LGG Fund for Sex Education  
Naples Daily News  
Naples Florida Weekly\*\*  
Naples Illustrated\*\*  
Priority Payments-MX Merchant Services\*\*  
Publix Super Markets Charities, Inc.\*  
Share Our Strength's No Kid Hungry Campaign\*\*\*  
The Allstate Foundation  
Malolli Team  
The Premier Foundation, Inc.  
The Richard M. Schulze Family Foundation

**\$1,000-\$4,999**

Amber Phillips\*  
American Culinary Federation, Inc.  
Anita Pittman\*  
Arlene J Shapiro\*  
Ashbritt Foundation, Inc.  
Charles and Helen Donahue Fund  
Charles Maxwell Meristem Family Wealth  
Chefs Touch LLC dba Dorona Claudine Wetzel\*  
Coleman, Yovanovich & Koester, P.A.  
Connie Stegall Fullmer  
Cynthia and Michael Lyster  
Dettler Family Foundation Inc.  
Dolores Zeeh  
First Florida Integrity Bank  
GL Homes  
Gulf Coast International Properties  
International Design Source, Inc.  
Irene O'Malley  
J. McLaughlin Georgia Pine Clothiers, LLC  
Jane V. Stepanek\*  
Jennifer Evans  
Judith Finkle\*  
Keybank Foundation  
Kristin O'Donnell  
Lauren Maxwell  
Linda Flewelling  
Linda Hurley\*  
Lucky's Market  
Mary Kloet  
Masquerade and Balloons Galore\*\*  
Millennium Physician Group, LLC  
Ms. Jill Cotton  
N2 Publishing\*\*  
Nancy Crane\*  
Nancy Grandis White\*  
Nordin/Craigie Fund  
Norris Home Furnishing, LLC  
Patricia and James Maslow  
Paul Pacter Fund  
Porsche Naples  
Relax SWFL, LLC  
Robin Stranahan  
Rotary Club of Naples Collier  
Seminole Casino Hotel  
ImmoKalee  
SOCO Interiors  
Southwest Florida Amateur Golf Association Inc.\*  
Starkweather & Shepley  
Stock Development  
Suncoast Credit Union  
Foundation

Susan and William Brock  
Suzanne Low\*  
Taber Tagliasacchi, P.A.  
Tamiami Ford, Inc.  
The Education Foundation of Collier County  
The Forum Club of Southwest Florida  
The Raleigh Hill Fund  
Village on the Bay, LLC  
West Bay Community Charitable Foundation, Inc.  
Wilfredo Emanuel Designs, Inc.  
William and Patricia Ferry\*  
Zonta Club of Naples\*  
Zonta Foundation of Naples Inc.

**\$500-\$999**

Barbara Willard  
Diana Riley\*  
Dr. Harold J. & Mary Duffy Pelzer Charitable Trust  
Eglis Marisol Hakanson\*  
Eliza Crowder  
Erin Otterbeck\*  
Ethel Annitti  
Francis Soffey  
Geraldine Miller  
James and Helene Price  
James Snediker  
K.S. Pollard  
Lux Boutique, LLC  
Maria Lane  
Maureen Zingo  
Melissa Smith\*  
Mordechai and Michal Wiesler  
New York Community Bank  
Oxford  
Peggy and Daniel LeKander  
Photo Magic Events\*\*  
Raymond James Charitable  
Robert Furey  
Sandra Pavelka  
Vogue Interiors, Inc.

**ESCAMBIA-SANTA ROSA**

**\$250,000-\$999,999**  
The Bear Family Foundation, Inc.

**\$100,000-\$149,999**

Dugas Family Foundation

**\$25,000-\$49,999**

Escambia County Sheriff's Office

**\$10,000-\$24,999**

Advanced Dental Concepts\*\*  
Brown Helicopter, Inc.  
CAT Country 98.7 & NewsRadio 92.3 & 1620\*\*  
Cox Communications\*\*  
Gulf Power Company  
Melba B. Meyer Charitable Trust  
Panhandle Charitable Open, Inc.  
Rachael and Albi Gilmer\*  
Santa Rosa Energy Center, LLC  
The Kerrigan Family Charitable Foundation, Inc.  
TJX Foundation, Inc.  
United Way of West Florida

**\$5,000-\$9,999**

Ann and James Neal\*  
Bubba Watson Foundation, Inc.  
Edward Jones Financial Advisor  
Gayle Piret\*  
Gulf Power Foundation  
Janis and Bill Foley\*  
Jerre and John Peacock  
Karen and Thomas Brown\*  
Margie and Alan Moore\*  
Switzer Brothers Charitable Foundation  
The Chadbourne Family Foundation, Inc.  
The Law Office of J.J. Talbott

**\$1,000-\$4,999**

Ace Unlocks  
Lorese B. Hines\*  
LuxExchange\*\*  
Mallory Studer\*  
Marcy Miller\*  
Marianne McMahon\*  
Marianne Moore\*  
Marlene Santos\*  
Mary Ann Long\*  
Mary Gamble\*, \*\*  
Mary Jane and Mike Bass\*  
Mary Maitland\*\*  
Maureen McGill  
McKenzie Motor Company  
Melissa and Robert Sidoti\*  
Michelle Fraley\*  
Michelle Salzman\*  
Navy Federal Credit Union  
Patricia and Mike McCormack\*  
Pen Air Federal Credit Union  
Pizzaz, LLC\*\*  
Publix Super Markets Charities, Inc.  
Randy McKenzie  
Rhonda Moorhead\*  
Rica Rogers\*  
Ruth and John Kane\*  
Sam Marshall Architects, P.A.  
Sandy Sansing Automotive  
Scott Simmering\*  
Sean Long\*  
Shannon Libbert\*  
Society of the Debutante  
Charity Collition  
Stevenson Klotz, LLP  
Susan and Brian Finger\*  
Susan Woolf\*  
Tanya Underwood\*  
Teresa and Arthur Shimek\*  
Teri Levin\*, \*\*  
The Finest Accessories, Inc.\*\*  
The Lewis Bear Company  
Theresa and James Morehouse\*  
Therese and Alistair McKenzie\*  
Tina Tortomase & Stephen Simpson\*  
Valerie and Ray Russenberger\*  
Veterinary Emergency Referral Center\*  
Vickie and John Bolyard\*  
Victoria Mullet\*  
Viki Weir\*  
Wei and Thomas Ueberschaer  
Wells Fargo Foundation

Kathy and Roger Ostrander\*  
Kathy Y. Whittington\*  
Katrina Mougey  
Kellie Hardy\*  
Keri Medlock\*  
Kiwanis Club of Big Lagoon Foundation, Inc.  
Kool Graphics\*\*  
Kristen Deese  
Kristina and John Gormley\*  
Kuhn Realty, LLC  
Lauren and Mike Cutter\*  
Laurie Rodgers and Pat Parmley\*  
Lee and Butch Hansen\*  
Linda and Charles Libers\*  
Linda and Joseph Buehler  
Lora and Lawrence Rodgers\*  
Lorese B. Hines\*  
LuxExchange\*\*  
Mallory Studer\*  
Marcy Miller\*  
Marianne McMahon\*  
Marianne Moore\*  
Marlene Santos\*  
Mary Ann Long\*  
Mary Gamble\*, \*\*  
Mary Jane and Mike Bass\*  
Mary Maitland\*\*  
Maureen McGill  
McKenzie Motor Company  
Melissa and Robert Sidoti\*  
Michelle Fraley\*  
Michelle Salzman\*  
Navy Federal Credit Union  
Patricia and Mike McCormack\*  
Pen Air Federal Credit Union  
Pizzaz, LLC\*\*  
Publix Super Markets Charities, Inc.  
Randy McKenzie  
Rhonda Moorhead\*  
Rica Rogers\*  
Ruth and John Kane\*  
Sam Marshall Architects, P.A.  
Sandy Sansing Automotive  
Scott Simmering\*  
Sean Long\*  
Shannon Libbert\*  
Society of the Debutante  
Charity Collition  
Stevenson Klotz, LLP  
Susan and Brian Finger\*  
Susan Woolf\*  
Tanya Underwood\*  
Teresa and Arthur Shimek\*  
Teri Levin\*, \*\*  
The Finest Accessories, Inc.\*\*  
The Lewis Bear Company  
Theresa and James Morehouse\*  
Therese and Alistair McKenzie\*  
Tina Tortomase & Stephen Simpson\*  
Valerie and Ray Russenberger\*  
Veterinary Emergency Referral Center\*  
Vickie and John Bolyard\*  
Victoria Mullet\*  
Viki Weir\*  
Wei and Thomas Ueberschaer  
Wells Fargo Foundation

Ace Unlocks  
Lorese B. Hines\*  
LuxExchange\*\*  
Mallory Studer\*  
Marcy Miller\*  
Marianne McMahon\*  
Marianne Moore\*  
Marlene Santos\*  
Mary Ann Long\*  
Mary Gamble\*, \*\*  
Mary Jane and Mike Bass\*  
Mary Maitland\*\*  
Maureen McGill  
McKenzie Motor Company  
Melissa and Robert Sidoti\*  
Michelle Fraley\*  
Michelle Salzman\*  
Navy Federal Credit Union  
Patricia and Mike McCormack\*  
Pen Air Federal Credit Union  
Pizzaz, LLC\*\*  
Publix Super Markets Charities, Inc.  
Randy McKenzie  
Rhonda Moorhead\*  
Rica Rogers\*  
Ruth and John Kane\*  
Sam Marshall Architects, P.A.  
Sandy Sansing Automotive  
Scott Simmering\*  
Sean Long\*  
Shannon Libbert\*  
Society of the Debutante  
Charity Collition  
Stevenson Klotz, LLP  
Susan and Brian Finger\*  
Susan Woolf\*  
Tanya Underwood\*  
Teresa and Arthur Shimek\*  
Teri Levin\*, \*\*  
The Finest Accessories, Inc.\*\*  
The Lewis Bear Company  
Theresa and James Morehouse\*  
Therese and Alistair McKenzie\*  
Tina Tortomase & Stephen Simpson\*  
Valerie and Ray Russenberger\*  
Veterinary Emergency Referral Center\*  
Vickie and John Bolyard\*  
Victoria Mullet\*  
Viki Weir\*  
Wei and Thomas Ueberschaer  
Wells Fargo Foundation

Ace Unlocks  
Lorese B. Hines\*  
LuxExchange\*\*  
Mallory Studer\*  
Marcy Miller\*  
Marianne McMahon\*  
Marianne Moore\*  
Marlene Santos\*  
Mary Ann Long\*  
Mary Gamble\*, \*\*  
Mary Jane and Mike Bass\*  
Mary Maitland\*\*  
Maureen McGill  
McKenzie Motor Company  
Melissa and Robert Sidoti\*  
Michelle Fraley\*  
Michelle Salzman\*  
Navy Federal Credit Union  
Patricia and Mike McCormack\*  
Pen Air Federal Credit Union  
Pizzaz, LLC\*\*  
Publix Super Markets Charities, Inc.  
Randy McKenzie  
Rhonda Moorhead\*  
Rica Rogers\*  
Ruth and John Kane\*  
Sam Marshall Architects, P.A.  
Sandy Sansing Automotive  
Scott Simmering\*  
Sean Long\*  
Shannon Libbert\*  
Society of the Debutante  
Charity Collition  
Stevenson Klotz, LLP  
Susan and Brian Finger\*  
Susan Woolf\*  
Tanya Underwood\*  
Teresa and Arthur Shimek\*  
Teri Levin\*, \*\*  
The Finest Accessories, Inc.\*\*  
The Lewis Bear Company  
Theresa and James Morehouse\*  
Therese and Alistair McKenzie\*  
Tina Tortomase & Stephen Simpson\*  
Valerie and Ray Russenberger\*  
Veterinary Emergency Referral Center\*  
Vickie and John Bolyard\*  
Victoria Mullet\*  
Viki Weir\*  
Wei and Thomas Ueberschaer  
Wells Fargo Foundation

Theresa and James Morehouse\*  
Therese and Alistair McKenzie\*  
Tina Tortomase & Stephen Simpson\*  
Valerie and Ray Russenberger\*  
Veterinary Emergency Referral Center\*  
Vickie and John Bolyard\*  
Victoria Mullet\*  
Viki Weir\*  
Wei and Thomas Ueberschaer  
Wells Fargo Foundation

Theresa and James Morehouse\*  
Therese and Alistair McKenzie\*  
Tina Tortomase & Stephen Simpson\*  
Valerie and Ray Russenberger\*  
Veterinary Emergency Referral Center\*  
Vickie and John Bolyard\*  
Victoria Mullet\*  
Viki Weir\*  
Wei and Thomas Ueberschaer  
Wells Fargo Foundation

Theresa and James Morehouse\*  
Therese and Alistair McKenzie\*  
Tina Tortomase & Stephen Simpson\*  
Valerie and Ray Russenberger\*  
Veterinary Emergency Referral Center\*  
Vickie and John Bolyard\*  
Victoria Mullet\*  
Viki Weir\*  
Wei and Thomas Ueberschaer  
Wells Fargo Foundation

Theresa and James Morehouse\*  
Therese and Alistair McKenzie\*  
Tina Tortomase & Stephen Simpson\*  
Valerie and Ray Russenberger\*  
Veterinary Emergency Referral Center\*  
Vickie and John Bolyard\*  
Victoria Mullet\*  
Viki Weir\*  
Wei and Thomas Ueberschaer  
Wells Fargo Foundation

Theresa and James Morehouse\*  
Therese and Alistair McKenzie\*  
Tina Tortomase & Stephen Simpson\*  
Valerie and Ray Russenberger\*  
Veterinary Emergency Referral Center\*  
Vickie and John Bolyard\*  
Victoria Mullet\*  
Viki Weir\*  
Wei and Thomas Ueberschaer  
Wells Fargo Foundation

Theresa and James Morehouse\*  
Therese and Alistair McKenzie\*  
Tina Tortomase & Stephen Simpson\*  
Valerie and Ray Russenberger\*  
Veterinary Emergency Referral Center\*  
Vickie and John Bolyard\*  
Victoria Mullet\*  
Viki Weir\*  
Wei and Thomas Ueberschaer  
Wells Fargo Foundation

Theresa and James Morehouse\*  
Therese and Alistair McKenzie\*  
Tina Tortomase & Stephen Simpson\*  
Valerie and Ray Russenberger\*  
Veterinary Emergency Referral Center\*  
Vickie and John Bolyard\*  
Victoria Mullet\*  
Viki Weir\*  
Wei and Thomas Ueberschaer  
Wells Fargo Foundation

Theresa and James Morehouse\*  
Therese and Alistair McKenzie\*  
Tina Tortomase & Stephen Simpson\*  
Valerie and Ray Russenberger\*  
Veterinary Emergency Referral Center\*  
Vickie and John Bolyard\*  
Victoria Mullet\*  
Viki Weir\*  
Wei and Thomas Ueberschaer  
Wells Fargo Foundation

Brigette Brooks\*, \*\*  
Carolyn and Jim Barnett  
Carrie Dean  
Cherry Fitch  
Cheryl Isham\*\*  
Christy Laggan  
Engineered Cooling Services  
Eva and David Maloney  
Eva Maloney\*\*  
Four Seasons Catering\*\*  
Jarrod Dawson  
Jennifer Bear\*\*  
Jennifer C. Rushing, PLLC  
Jenny Roney\*\*  
Jen's Designer Deals\*\*  
Jessica Rockhill  
Jewelers Trade Shop  
Judith and Ted Gund  
Karen Burke  
Karen McCarl\*\*  
Krewe of SWAT\*\*  
Lauren Gund  
Lee Tracy Pensacola\*\*  
Leta Criffenden  
Lori Hoskins  
Marny and Donald Needle  
Martha and Georges Antoun  
Maureen Donahue  
McKenzie Law Firm  
Regina and Colten Wright  
Rene Abel  
Rica Rogers\*\*  
Salz Studios\*\*  
Sherri Ziegler  
Sue and Johnny Bell  
Susan Finger\*\*  
Target Field Trip Grants  
The Bottle Shop\*\*  
The Hearing Doctor, Inc.  
The Lewis Bear Company\*\*  
Transcending Dreams Photography\*\*  
Valerie and Charles Toner  
Vicki Bordelon  
Woodfin Cabassa  
Orthodontics

Adonis Harris  
Amscot Corporation  
Andrea Greene  
Andrew Gordon  
Annette & Ryan O'Malley\*\*  
Autumn Bonsall  
AXA Foundation  
Becker Communications, Inc.  
Campaign Against Human Trafficking South Shore, Inc.  
Catherine & Bob Smith  
Chelsea & Lee Hoagland  
Children's Board of Hillsborough County  
Elizabeth & John Ackerman  
Erin Linehan  
Ford & Harrison, LLP  
Gasparilla Distance Classic Association, Inc.  
Genna Dziloski  
Greenberg Traurig, LLP  
Hamburger Mary's  
HCSO Charities, Inc.  
J J Taylor Companies, Inc.  
Jennifer Conley  
Joyce Cotton  
Kristopher & Kelly Verra  
Mayer Electric Supply Company, Inc.  
MidFlorida Credit Union  
Mike & Sheri Boesch  
PAR, Inc.\*  
PNC Foundation  
Rasmussen, Inc.  
Rocky Brancato  
Showmen's Association  
Charities Corporation  
Tampa Bay Rays  
The Bank of Tampa  
Wland Guerra King, P.A.  
Williams Automotive Group  
Zonta Club of Tampa

Adonis Harris  
Amscot Corporation  
Andrea Greene  
Andrew Gordon  
Annette & Ryan O'Malley\*\*  
Autumn Bonsall  
AXA Foundation  
Becker Communications, Inc.  
Campaign Against Human Trafficking South Shore, Inc.  
Catherine & Bob Smith  
Chelsea & Lee Hoagland  
Children's Board of Hillsborough County  
Elizabeth & John Ackerman  
Erin Linehan  
Ford & Harrison, LLP  
Gasparilla Distance Classic Association, Inc.  
Genna Dziloski  
Greenberg Traurig, LLP  
Hamburger Mary's  
HCSO Charities, Inc.  
J J Taylor Companies, Inc.  
Jennifer Conley  
Joyce Cotton  
Kristopher & Kelly Verra  
Mayer Electric Supply Company, Inc.  
MidFlorida Credit Union  
Mike & Sheri Boesch  
PAR, Inc.\*  
PNC Foundation  
Rasmussen, Inc.  
Rocky Brancato  
Showmen's Association  
Charities Corporation  
Tampa Bay Rays  
The Bank of Tampa  
Wland Guerra King, P.A.  
Williams Automotive Group  
Zonta Club of Tampa

Adonis Harris  
Amscot Corporation  
Andrea Greene  
Andrew Gordon  
Annette & Ryan O'Malley\*\*  
Autumn Bonsall  
AXA Foundation  
Becker Communications, Inc.  
Campaign Against Human Trafficking South Shore, Inc.  
Catherine & Bob Smith  
Chelsea & Lee Hoagland  
Children's Board of Hillsborough County  
Elizabeth & John Ackerman  
Erin Linehan  
Ford & Harrison, LLP  
Gasparilla Distance Classic Association, Inc.  
Genna Dziloski  
Greenberg Traurig, LLP  
Hamburger Mary's  
HCSO Charities, Inc.  
J J Taylor Companies, Inc.  
Jennifer Conley  
Joyce Cotton  
Kristopher & Kelly Verra  
Mayer Electric Supply Company, Inc.  
MidFlorida Credit Union  
Mike & Sheri Boesch  
PAR, Inc.\*  
PNC Foundation  
Rasmussen, Inc.  
Rocky Brancato  
Showmen's Association  
Charities Corporation  
Tampa Bay Rays  
The Bank of Tampa  
Wland Guerra King, P.A.  
Williams Automotive Group  
Zonta Club of Tampa

Adonis Harris  
Amscot Corporation  
Andrea Greene  
Andrew Gordon  
Annette & Ryan O'Malley\*\*  
Autumn Bonsall  
AXA Foundation  
Becker Communications, Inc.  
Campaign Against Human Trafficking South Shore, Inc.  
Catherine & Bob Smith  
Chelsea & Lee Hoagland  
Children's Board of Hillsborough County  
Elizabeth & John Ackerman  
Erin Linehan  
Ford & Harrison, LLP  
Gasparilla Distance Classic Association, Inc.  
Genna Dziloski  
Greenberg Traurig, LLP  
Hamburger Mary's  
HCSO Charities, Inc.  
J J Taylor Companies, Inc.  
Jennifer Conley  
Joyce Cotton  
Kristopher & Kelly Verra  
Mayer Electric Supply Company, Inc.  
MidFlorida Credit Union  
Mike & Sheri Boesch  
PAR, Inc.\*  
PNC Foundation  
Rasmussen, Inc.  
Rocky Brancato  
Showmen's Association  
Charities Corporation  
Tampa Bay Rays  
The Bank of Tampa  
Wland Guerra King, P.A.  
Williams Automotive Group  
Zonta Club of Tampa

Adonis Harris  
Amscot Corporation  
Andrea Greene  
Andrew Gordon  
Annette & Ryan O'Malley\*\*  
Autumn Bonsall  
AXA Foundation  
Becker Communications, Inc.  
Campaign Against Human Trafficking South Shore, Inc.  
Catherine & Bob Smith  
Chelsea & Lee Hoagland  
Children's Board of Hillsborough County  
Elizabeth & John Ackerman  
Erin Linehan  
Ford & Harrison, LLP  
Gasparilla Distance Classic Association, Inc.  
Genna Dziloski  
Greenberg Traurig, LLP  
Hamburger Mary's  
HCSO Charities, Inc.  
J J Taylor Companies, Inc.  
Jennifer Conley  
Joyce Cotton  
Kristopher & Kelly Verra  
Mayer Electric Supply Company, Inc.  
MidFlorida Credit Union  
Mike & Sheri Boesch  
PAR, Inc.\*  
PNC Foundation  
Rasmussen, Inc.  
Rocky Brancato  
Showmen's Association  
Charities Corporation  
Tampa Bay Rays  
The Bank of Tampa  
Wland Guerra King, P.A.  
Williams Automotive Group  
Zonta Club of Tampa

Adonis Harris  
Amscot Corporation  
Andrea Greene  
Andrew Gordon  
Annette & Ryan O'Malley\*\*  
Autumn Bonsall  
AXA Foundation  
Becker Communications, Inc.  
Campaign Against Human Trafficking South Shore, Inc.  
Catherine & Bob Smith  
Chelsea & Lee Hoagland  
Children's Board of Hillsborough County  
Elizabeth & John Ackerman  
Erin Linehan  
Ford & Harrison, LLP  
Gasparilla Distance Classic Association, Inc.  
Genna Dziloski  
Greenberg Traurig, LLP  
Hamburger Mary's  
HCSO Charities, Inc.  
J J Taylor Companies, Inc.  
Jennifer Conley  
Joyce Cotton  
Kristopher & Kelly Verra  
Mayer Electric Supply Company, Inc.  
MidFlorida Credit Union  
Mike & Sheri Boesch  
PAR, Inc.\*  
PNC Foundation  
Rasmussen, Inc.  
Rocky Brancato  
Showmen's Association  
Charities Corporation  
Tampa Bay Rays  
The Bank of Tampa  
Wland Guerra King, P.A.  
Williams Automotive Group  
Zonta Club of Tampa

Adonis Harris  
Amscot Corporation  
Andrea Greene  
Andrew Gordon  
Annette & Ryan O'Malley\*\*  
Autumn Bonsall  
AXA Foundation  
Becker Communications, Inc.  
Campaign Against Human Trafficking South Shore, Inc.  
Catherine & Bob Smith  
Chelsea & Lee Hoagland  
Children's Board of Hillsborough County  
Elizabeth & John Ackerman  
Erin Linehan  
Ford & Harrison, LLP  
Gasparilla Distance Classic Association, Inc.  
Genna Dziloski  
Greenberg Traurig, LLP  
Hamburger Mary's  
HCSO Charities, Inc.  
J J Taylor Companies, Inc.  
Jennifer Conley  
Joyce Cotton  
Kristopher & Kelly Verra  
Mayer Electric Supply Company, Inc.  
MidFlorida Credit Union  
Mike & Sheri Boesch  
PAR, Inc.\*  
PNC Foundation  
Rasmussen, Inc.  
Rocky Brancato  
Showmen's Association  
Charities Corporation  
Tampa Bay Rays  
The Bank of Tampa  
Wland Guerra King, P.A.  
Williams Automotive Group  
Zonta Club of Tampa

Adonis Harris  
Amscot Corporation  
Andrea Greene  
Andrew Gordon  
Annette & Ryan O'Malley\*\*  
Autumn Bonsall  
AXA Foundation  
Becker Communications, Inc.  
Campaign Against Human Trafficking South Shore, Inc.  
Catherine & Bob Smith  
Chelsea & Lee Hoagland  
Children's Board of Hillsborough County  
Elizabeth & John Ackerman  
Erin Linehan  
Ford & Harrison, LLP  
Gasparilla Distance Classic Association, Inc.  
Genna Dziloski  
Greenberg Traurig, LLP  
Hamburger Mary's  
HCSO Charities, Inc.  
J J Taylor Companies, Inc.  
Jennifer Conley  
Joyce Cotton  
Kristopher & Kelly Verra  
Mayer Electric Supply Company, Inc.  
MidFlorida Credit Union  
Mike & Sheri Boesch  
PAR, Inc.\*  
PNC Foundation  
Rasmussen, Inc.  
Rocky Brancato  
Showmen's Association  
Charities Corporation  
Tampa Bay Rays  
The Bank of Tampa  
Wland Guerra King, P.A.  
Williams Automotive Group  
Zonta Club of Tampa

Adonis Harris  
Amscot Corporation  
Andrea Greene  
Andrew Gordon  
Annette & Ryan O'Malley\*\*  
Autumn Bonsall  
AXA Foundation  
Becker Communications, Inc.  
Campaign Against Human Trafficking South Shore, Inc.  
Catherine & Bob Smith  
Chelsea & Lee Hoagland  
Children's Board of Hillsborough County  
Elizabeth & John Ackerman  
Erin Linehan  
Ford & Harrison, LLP  
Gasparilla Distance Classic Association, Inc.  
Genna Dziloski  
Greenberg Traurig, LLP  
Hamburger Mary's  
HCSO Charities, Inc.  
J J Taylor Companies, Inc.  
Jennifer Conley  
Joyce Cotton  
Kristopher & Kelly Verra  
Mayer Electric Supply Company, Inc.  
MidFlorida Credit Union  
Mike & Sheri Boesch  
PAR, Inc.\*  
PNC Foundation  
Rasmussen, Inc.  
Rocky Brancato  
Showmen's Association  
Charities Corporation  
Tampa Bay Rays  
The Bank of Tampa  
Wland Guerra King, P.A.  
Williams Automotive Group  
Zonta Club of Tampa

Adonis Harris  
Amscot Corporation  
Andrea Greene  
Andrew Gordon  
Annette & Ryan O'Malley\*\*  
Autumn Bonsall  
AXA Foundation  
Becker Communications, Inc.  
Campaign Against Human Trafficking South Shore, Inc.  
Catherine & Bob Smith  
Chelsea & Lee Hoagland  
Children's Board of Hillsborough County  
Elizabeth & John Ackerman  
Erin Linehan  
Ford & Harrison, LLP  
Gasparilla Distance Classic Association, Inc.  
Genna Dziloski  
Greenberg Traurig, LLP  
Hamburger Mary's  
HCSO Charities, Inc.  
J J Taylor Companies, Inc.  
Jennifer Conley  
Joyce Cotton  
Kristopher & Kelly Verra  
Mayer Electric Supply Company, Inc.  
MidFlorida Credit Union  
Mike & Sheri Boesch  
PAR, Inc.\*  
PNC Foundation  
Rasmussen, Inc.  
Rocky Brancato  
Showmen's Association  
Charities Corporation  
Tampa Bay Rays  
The Bank of Tampa  
Wland Guerra King, P.A.  
Williams Automotive Group  
Zonta Club of Tampa

Adonis Harris  
Amscot Corporation  
Andrea Greene  
Andrew Gordon  
Annette & Ryan O'Malley\*\*  
Autumn Bonsall  
AXA Foundation  
Becker Communications, Inc.  
Campaign Against Human Trafficking South Shore, Inc.  
Catherine & Bob Smith  
Chelsea & Lee Hoagland  
Children's Board of Hillsborough County  
Elizabeth & John Ackerman  
Erin Linehan  
Ford & Harrison, LLP  
Gasparilla Distance Classic Association, Inc.  
Genna Dziloski  
Greenberg Traurig, LLP  
Hamburger Mary's  
HCSO Charities, Inc.  
J J Taylor Companies, Inc.  
Jennifer Conley  
Joyce Cotton  
Kristopher & Kelly Verra  
Mayer Electric Supply Company, Inc.  
MidFlorida Credit Union  
Mike & Sheri Boesch  
PAR, Inc.\*  
PNC Foundation  
Rasmussen, Inc.  
Rocky Brancato  
Showmen's Association  
Charities Corporation  
Tampa Bay Rays  
The Bank of Tampa  
Wland Guerra King, P.A.  
Williams Automotive Group  
Zonta Club of Tampa

Adonis Harris  
Amscot Corporation  
Andrea Greene  
Andrew Gordon  
Annette & Ryan O'Malley\*\*  
Autumn Bonsall  
AXA Foundation  
Becker Communications, Inc.  
Campaign Against Human Trafficking South Shore, Inc.  
Catherine & Bob Smith  
Chelsea & Lee Hoagland  
Children's Board of Hillsborough County  
Elizabeth & John Ackerman  
Erin Linehan  
Ford & Harrison, LLP  
Gasparilla Distance Classic Association, Inc.  
Genna Dziloski  
Greenberg Traurig, LLP  
Hamburger Mary's  
HCSO Charities, Inc.  
J J Taylor Companies, Inc.  
Jennifer Conley  
Joyce Cotton  
Kristopher & Kelly Verra  
Mayer Electric Supply Company, Inc.  
MidFlorida Credit Union  
Mike & Sheri Boesch  
PAR, Inc.\*  
PNC Foundation  
Rasmussen, Inc.  
Rocky Brancato  
Showmen's Association  
Charities Corporation  
Tampa Bay Rays  
The Bank of Tampa  
Wland Guerra King, P.A.  
Williams Automotive Group  
Zonta Club of Tampa

Adonis Harris  
Amscot Corporation  
Andrea Greene  
Andrew Gordon  
Annette & Ryan O'Malley\*\*  
Autumn Bonsall  
AXA Foundation  
Becker Communications, Inc.  
Campaign Against Human Trafficking South Shore, Inc.  
Catherine & Bob Smith  
Chelsea & Lee Hoagland  
Children's Board of Hillsborough County  
Elizabeth & John Ackerman  
Erin Linehan  
Ford & Harrison, LLP  
Gasparilla Distance Classic Association, Inc.  
Genna Dziloski  
Greenberg Traurig, LLP  
Hamburger Mary's  
HCSO Charities, Inc.<



Dierdre White  
Everingham Electric  
James Dwyer  
Jasmine Roe  
Jason Chepenik  
Jennifer Young  
John Collins  
Kelly & Hunter Cone  
Kemp, Ruge & Green Law Group  
Klar & Klar Architects, Inc.  
Mary Marx & Mike Fitch  
Mr. Mike Felix  
Nielsen  
Patrick Linehan  
Pepin Distributing Company  
Robert West  
Rosemary Armstrong  
Shelley Heistand  
Soroptimist International of Tampa  
Tampa Bay Paralegal Association, Inc.  
Tanya Hollins  
TD Bank  
The Fountain Group  
Todd Golbus  
Tracy MacLean  
Yvette Segura

## JACKSONVILLE

**\$25,000-\$49,999**

Healy Family Foundation\*  
Kids Hope Alliance  
Peggy and J.F. Bryan\*  
The Community Foundation for Northeast Florida  
United Way of Northeast Florida

**\$10,000-\$24,999**

Amber and Sean Anthony\*  
Citigroup\*\*  
Delores Barr Weaver Fund  
Joanne and Jim Marx\*  
Kelly and Scott Gramling\*  
Law Offices of Ron Sholes, P.A.  
MaryPat and David Kulik\*  
Mrs. Mary Virginia Terry  
Stuart Ashby-Fore\*  
The Allstate Foundation  
The Thomas M. Kirby and Irene B. Kirby Charitable Foundation  
Valerie and William Scrogins\*

**\$5,000-\$9,999**

Allan McCarty  
Amy and Thomas Slater\*  
Ann Mackey\*  
Anonymous\*  
Arthur Dobosiewicz\*  
Billie & John Rawot\*  
Catering by Liz\*  
Cecy and Paul Fazio\*  
Connie Menor\*  
Cynthia and James Edgar\*  
Cynthia Kaner\*  
Debbie Tension\*  
Deerwood Rotary Charities  
Della Shaw\*  
Dr. Renee McQueen\*  
Emily Benham Bishop\*  
Erin Homan\*  
Fort Family Investments aka Perimeter Realty  
Granling Investments, LLC\*  
Helen Shaw\*  
Holly Emas\*

Jan Kirby\*  
Jay Allgood\*  
Jennifer and Anthony Candelino\*  
Jennifer and Steve Betz\*, \*\*  
Jennifer Kjellman\*  
Joan and James Van Vleck  
Julie Holt\*  
Karen Nasrallah\*  
Kelly and Robert Straub\*  
Kimberly Allen\*  
Kimberly and John Reed\*  
Kristina & Neil Powell\*  
Kyle Dorsey\*  
Laura Gonzales\*  
Leigh Gunn\*  
Leslie Redd\*  
Linda Stein\*  
Lindsay Moore\*  
Lynn and Gordon Bailey, III\*, \*\*  
Martha Fraser\*  
Mary Morris\*  
Mary Warner\*, \*\*  
Maxine Kroll\*  
Medtronic Foundation  
Melissa Oswald\*  
Meredith Frisch\*  
Patricia & Richard Jones\*  
Patricia & David Henry\*  
Patty & Jose De Rojas\*  
Publix Super Markets Charities, Inc.\*  
Rae and Ronnie Brown\*  
Robin Abraham\*  
Robin and Dan Wahby\*  
Rosalya Escoto\*  
Sarah Bohr\*  
Sean Todd\*  
Shylo Kline\*  
Staci Lewis\*  
Steve and Jennifer Betz\*  
Susan & Ted Hughes\*  
Suzanne Horne\*  
Urvashi and Deven Patel\*  
Veronica Lacy\*  
Victoria Hahn and Craig Seeley\*  
VyStar Credit Union  
Whitney Hetlin\*  
Zimmerman Family Foundation\*

**\$1,000-\$4,999**

Aetna Foundation  
AT&T Telecom Pioneers Florida Chapter #39  
Bank of America Employee Giving Campaign  
Baptist Health Systems, Inc.  
Barbara Miller  
Barbizon USA, LLC  
Becky Schumann  
Birgit Harrell  
Charities Aid Foundation of America  
Cherisa Murphy  
Cheryl & Sonny Martin  
CREW Jacksonville  
CSX Transportation  
Danis Construction, LLC  
David Garrison and Terri Talley Venters Fund  
David Turner  
Dawnelle Bass  
Deborah Williams  
Diane & Richard Erickson  
Emerald C's Development, Inc.  
Fidelity Brokerage Services, LLC

Genario Wynn  
Gunster  
Harden & Associates Foundation  
Haskell  
Heather Nathanson  
Intrepid Capital Management, Inc.  
Jacksonville Jaguars Foundation, Inc.\*  
Jane and Timothy Riechmann JEA  
Jennifer Ragsdale-Garrett\*  
Joan Grander and Gordon West  
Joanny Torres  
Johnson & Johnson Family of Companies  
June Buckley  
Lillian A. Braden  
Madaris Entertainment  
Mandarin United Methodist Women  
Marilou Halim  
Mark Bennett  
Megan Del Pizzo  
Michelle Cook  
Natalie & Andrus Healy\*  
Nonprofit Center of Northeast Florida  
NuStar Foundation  
O'Neill Family Charitable Foundation  
Pajcic & Pajcic, P.A.  
Peggy Schiffers  
Petway Family Foundation Fund  
Pilot Club of Jacksonville, Inc.\*, \*\*  
Ponte Vedra High School  
Robert W. Baird & Co., Inc. RS&H, Inc.  
Ruth Conley  
Tammi McGriff\*\*  
Target Corporation  
The Gate Foundation  
The GoodCoin Foundation  
Tom Bush Family of Dealerships  
Trisha Haskell  
UBS  
US Assure  
W.W. Gay Mechanical Contractor, Inc.  
Weyerhaeuser Foundation

**\$500-\$999**

Alida Lupari  
Allstate - The Giving Campaign  
Andrea Fritschle  
Andrew and Colleen Sutter  
Annie Erstling  
Aprille County  
Arezou Jolly  
Bank of America  
Bank of America Charitable Gift Fund  
Brandice Choi  
Brenda and Jeff Wegrzyn\*\*  
Brian Riley  
Christ United Methodist Church  
David and Cindy Baker  
David and Susan Heekin  
Deirdre MacCarthy  
Deutsche Bank Americas Foundation  
Dhaval Patel  
Diane David

FrontStream Panorama Workplace  
Jacksonville Chamber of Commerce  
Jacksonville University  
Jennifer Bachman\*\*  
JPMorgan Chase & Company  
Juliana Rowland  
Kathy and Matt Plath  
Kendra Scott, LLC  
Kimi Ramsey  
Lois and Harvey Schlesinger\*  
Madaris Entertainment  
Mark McGowan  
Mary Jane Renninger  
Mildred Hall  
NGM Charitable Foundation  
Oceanfront Lodging II, Inc. D/B/A Four Points by Sheraton\*\*  
Pamela and Keith Riechmann  
Patricia Trevathan  
Pete Madorma  
Ronnie Hawthorne  
Sara Passaro  
Saxon Business Systems  
Shepherd of the Woods Lutheran Church  
Staats Family Charitable Fund  
Suzanne Lichter  
Tamara and Gregory Garrett  
Tammy Morreale  
The Doerr Foundation  
The EJC Family Fund  
The Landmark Foundation, Inc.  
YourCause, LLC, Trustee for Medtronic Foundation

## LEE

**\$50,000-\$99,999**

The Richard M. Schulze Family Foundation

**\$25,000-\$49,999**

Fort Myers Infinity\*\*  
Lee County Board of County Commissioners  
Priority Marketing of Southwest Florida, Inc.\*\*  
United Way of Lee, Hendry, Glades, and Okeechobee Counties

**\$10,000-\$24,999**

Alexandra and Eunice Bremner\*  
Arthrex, Inc.  
Boy Agnew Potanovic, PLLC  
Brian Rist  
Caloosa Tent & Rental\*\*  
Connie and Ed Lizak\*  
Elizabeth K. Galeana Charitable Foundation, Inc.  
Embassy Suites by Hilton Fort Myers I Estero\*\*  
Fort Myers Police Department  
Fred & Jean Allegretti Foundation, Inc.  
House of Wu\*\*  
Office of the Sheriff, Lee County  
Sandra Stilwell Youngquist  
Suncoast Credit Union Foundation  
SunTrust Foundation  
The News-Press Media Group\*\*  
Alexandra and Eunice Bremner\*  
Arthrex, Inc.  
Boy Agnew Potanovic, PLLC  
Brian Rist  
Caloosa Tent & Rental\*\*  
Connie and Ed Lizak\*  
Elizabeth K. Galeana Charitable Foundation, Inc.  
Embassy Suites by Hilton Fort Myers I Estero\*\*  
Fort Myers Police Department  
Fred & Jean Allegretti Foundation, Inc.  
House of Wu\*\*  
Office of the Sheriff, Lee County  
Sandra Stilwell Youngquist  
Suncoast Credit Union Foundation  
SunTrust Foundation  
The News-Press Media Group\*\*

The Robert J. Gunterberg Charitable Foundation  
Toler Family Foundation, Inc.

**\$5,000-\$9,999**

California Closets  
Anonymous  
Edison National Bank/Bank of the Islands  
Fred & Elaine Hawkins\*  
Enterprise Holdings Foundation  
Gail Markham\*, \*\*  
Galloway Family of Dealerships  
John Agnew and Suzanne Boy\*  
Kitty Davis  
Lee Health  
Marja Norris\*, \*\*  
Mike and Dawn Sullivan  
Patricia and James Carroll\*  
Prima Luce on the Waterfront  
Publix Super Markets Charities, Inc.\*  
Scott & Mary Fischer\*  
Seminole Casino Hotel  
Siesta Pebble Inc.  
The Don and Cathy Brooks Charitable Fund  
Suzanne Lichter  
The Quinton B. and Beverly H. McNew Foundation, Inc.  
Valerie's Lounge & Liquors  
WINK FM\*\*

**\$1,000-\$4,999**

Alice Madden Giving Fund  
Anna "Boots" Tolles\*  
Barbara Sullivan  
Betsy Bernstein  
Brad Phelps and Ryan Frost  
Brandie and Douglas Duncan\*\*  
Brian Kelley  
Cape Coral Community Foundation  
Chris-Tel Construction Company\*  
Christina Harris Schwinn\*  
Colleen and Earl Quenzel  
Colonial Country Club of Lee County Master Association  
Comrie Foundation, Inc.  
Crave Culinaire\*\*  
Cushman & Wakefield  
David & Edith "Cookie" Douglas  
David Galloway  
Deanna Hansen\*, \*\*  
Dennis Green  
Denny Sharma  
Diana and Scott Willis\*, \*\*  
Donna Caruso\*, \*\*  
Doris and Steve Colgate\*\*  
Dorothy and Ron Fitzgerald\*\*  
Dr. Will and Anne Wittenborn\*  
Ellen Gardner  
Ellen Richards  
Everett "Buzz" Waid\*  
FineMark National Bank & Trust  
Garramone Plastic Surgery\*\*  
Gary Griffin  
Gulfshore Life\*\*  
Jackie McCurdy\*  
Jay Bisson  
Jessica and Jaron Henkel  
Judy and Andrew Williams\*  
Kathleen McClanahan-Gruhl  
Kathy and Ronald Toll  
Kay MacDougall and Sons Memorial Fund

Kelly Bart  
Kevin and Doreen Ruane  
Kristine Cardinale  
Kyle Pillsbury  
LadyCakes Bakery\*\*  
Lake Michigan Credit Union  
Law Offices of Kelly L. Fayer, P.A.\*  
Mark and Susan Blust\*  
Markham Norton Mosteller Wright & Company, P.A.  
Marlene S. Moulton, M.D.\*  
Mary Elizabeth Byck  
Matt and Rachel Wykes  
Megan DiPiero Photography\*  
O'Donnell Landscapes Inc.  
Pason and Renee Gaddis\*  
Patrick Flood  
Richard and Vicki Pitbladdo Foundation Fund  
Riverwoods Plantation RV Resort Condo Assoc., Inc.  
Robert Pawlecki  
Rotary Club of Cape Coral Sunset, Inc.  
Rotary Club of Estero Foundation Inc.  
Ryan & Natalie Van Horn  
Sandra and Rich Heinrich  
Sanibel Congregational United Church of Christ  
Scott Fischer Enterprises, LLC  
Service Contracting Solutions  
St Peter Evangelical Lutheran Church of Fort Myers Beach  
Stephen LaRosa  
Steve and Allyson Ross  
Stevens Construction  
Ted Lyon  
Terri Bryan  
Terri Wade  
The Arias Law Firm, P.A.  
The Flood Family Foundation II, Inc.  
The Honorable and Mrs. Seals  
The Laser Lounge & Spa  
The Smart Companies, LLC  
The Speakers Assembly of SW Florida  
The Wayne and Laurie Omelia Family Charitable Gift Fund  
Thomas and Kerrey Hoolihan  
ToniRae Hurley\*\*  
Wanda M. Hurt  
William M. and Michele A. Holcomb Family Fund  
Women's Day  
Women's Sports Foundation  
Zonta Foundation of S.W. Florida, Inc.

Elaine Green\*  
Holly Boldrin  
IberiaBank  
James East  
John Finstrom  
John Potanovic  
Judy Cutler-Teeven  
Karina Borgia-Lacroix  
Kathleen Petel  
Kitty and Charles Green\*  
Lauren Sherry Wesolek  
Lenora Marshall  
Linda Brown Lenz\*\*  
Linda Dion  
Lori and Dean Munro\*  
Maria and Wayne Wiles\*  
Marie Ackord  
Marilyn and Anthony Stout\*  
Marshall T. Bower, Esq.\*  
Mattie Shoemaker Young  
Melvin Morgan  
Michael and Sally Jackson  
MJWW Charitable Foundation  
Morgan & Morgan  
Nancy B. and Howard K. Cohen Charitable Fund  
Nancy Flnc.h\*  
Natalie's Skin Solutions, LLC  
Noelle Casagrande\*  
Paul Miller  
Rachel Peacock  
Royal Razzle Dazzle, Inc.  
Rusty Brown\*  
Sheila and Sam Morelli  
Stuart Draper  
Tanya Glass\*\*  
Trevor Taulman  
Volkswagen of Naples

CarlMax Foundation  
Florida Autosport  
Greta Dupuy  
Jeanna Olson\*\*  
Publix-Northeast Shopping Center #00640  
Publix #01020  
Publix #1014  
Publix Super Markets Charities, Inc.\*\*  
Publix Supermarkets-Community Affairs  
Publix Supermarkets-Town Center Shops  
Publix Supermarkets #00433  
Publix Supermarkets, Inc.  
Publix Supermarkets, Inc. Store #1340  
Share Our Strength's No Kid Hungry Campaign\*\*\*  
Zonta International

**\$500-\$999**

Allstate Foundation  
Andrea and William Horowitz\*  
Barbara Watt-Biggs  
Benevity Community Impact Fund  
Bernard Pat O'Rourke\*  
Brian and Bonnie O'Connell  
Brian and Trudi Kemmis  
Bryan Avery  
Cathleen Morgan  
Charles Giese  
Chelsea Miller  
Cheryl Komnick\*\*  
Christin and David Collins  
Club Pilates  
Constance White-Davis  
Deborah Campbell\*  
Dwayne Bergmann\*

Graciela Marquina and Thomas Joiner  
Janet and Alicia Stoner  
Kathleen Hampton  
Kelly Hutchinson  
Kelly Otte\*\*  
Leon County Board of County Commissioners  
Mainline Information Systems  
Nancy Brennan  
Network for Good  
Region Bank  
Roberta Christie\*\*  
Tallahassee Memorial HealthCare  
Tallahassee Northside Rotary Club, Inc.  
Tallahassee Orthopedic Clinic  
Tallahassee-Leon County Office of Economic Vitality  
The Stoner-Crew Fund  
Tiffany Ardley\*\*  
United Partners for Human Services  
United Way of the Big Bend  
Universal Collision  
Vanguard Charitable Endowment Program  
Wallisa Cobb  
Zonta Cares Inc.

**\$500-\$999**

Aisha Ganzy Allen  
Alicia Smith  
Ayasha Scott  
Bank of America Charitable Gift Fund  
Blake Hayward  
Capital Eurocars  
Carla Laroche  
Cynthia O'Connell  
Deer Lake United Methodist Church, Inc.  
Dianne Anderson  
Donna McBride  
Ex-Static Chiropractic  
FBMC Benefits Management, Inc.  
Fidelity Charitable  
Gina and Robert Giacomo\*\*  
Hillside Building, LLC  
Jeffrey Mandel  
Jodi and Frank Stevens  
Joel Dawson  
John Humphress  
Kate Kile\*\*  
Krista Campbell  
LaShawn Gordon  
Lisa Umana  
Lorraine Head  
Malone Smith\*\*  
Michelle Dickson  
Mike and Judy Pate  
Oasis Center for Women and Girls  
Renisha Gibbs  
Riptar Charitable Gift Fund  
RIPTAR Properties LLC  
Robert and Linda Bruce  
Robert Callahan  
Robin and Dan Thompson\*\*  
Shera Fahey  
Stefanie Bowden  
Tari Rossitto-Van Winkle  
Ted Frazee  
The Beatitude Foundation, Inc.  
The First Bank  
Tom and Leisa McCullion  
Umana Family Charitable Fund

**\$5,000-\$9,999**

CarlMax Foundation  
Florida Autosport  
Greta Dupuy  
Jeanna Olson\*\*  
Publix-Northeast Shopping Center #00640  
Publix #01020  
Publix #1014  
Publix Super Markets Charities, Inc.\*\*  
Publix Supermarkets-Community Affairs  
Publix Supermarkets-Town Center Shops  
Publix Supermarkets #00433  
Publix Supermarkets, Inc.  
Publix Supermarkets, Inc. Store #1340  
Share Our Strength's No Kid Hungry Campaign\*\*\*  
Zonta International

**\$1,000-\$4,999**

Catherine Jones\*\*  
Cobb Realty & Investment Co.  
Comcast  
David Overstreet\*\*  
Dot Binger  
Elizabeth Hammock  
Elsie Crowell  
FSU Credit Union

## MACON

**\$25,000-\$49,999**

Share Our Strength's No Kid Hungry Campaign\*\*\*

## MANATEE

**\$150,000-\$249,000**

Manatee County Board of County Commissioners

**\$100,000-\$149,999**

Daniel S Blalock Jr Charitable Foundation

**\$25,000-\$49,999**

2020 Giving Challenge Fund  
Green Charitable Trust

**\$10,000-\$24,999**

Carl Reynolds Law  
The Patterson Foundation  
W. Paul Hoenle  
W. Paul Hoenle Foundation

**\$5,000-\$9,999**

Alexandra Ziegler  
Andy & Anne Hemmert  
Anna Maria Island Women's Giving Circle Fund  
Anonymous  
Bradenton Kiwanis Foundation  
Brian Berry & Margaret Parente Rev Trust  
John & Amanda Horne  
LWR Communities, LLC  
Patrick & Charlene Neal  
Pittsburgh Associates of Florida

**\$1,000-\$4,999**

Air & Energy Inc.  
Amateur Golf Association-Manatee Chapter  
Amy Bowes  
Barb Jennings  
Blake Medical Center  
Bowes Imaging Centers  
Brian & Caroline Ellerson\*\*  
Carol & Bob Carter  
Cathy Layton  
Christina Riggio  
Cindy Burke  
Cynthia & James Montgomery\*  
Dana & Larry Foerster\*\*  
Darcie Duncan  
Eugene F. and Elizabeth Hull Fund  
Flanzer Philanthropic Trust  
Focus Wealth Strategies, LLC  
George Meadows  
Greene Hamrick Quinlan & Schermer, P.A. Trust  
H. Lawrence Clark  
Hoenle Family Foundation Fund  
Howe Development  
Icard, Merrill, Cullis, Timm, Furen & Ginsberg  
Insurance Time of Bradenton, Inc.  
Jane Stewart  
Janelle Esposito\*\*  
Jessica Currin\*\*  
Jodi Boyatt\*\*  
John S. and James L. Knight Foundation  
Kallins & Little, P.A.  
Kathryn McCracken  
Laurie Schulman

Layton Donor Advised Fund  
Manatee Memorial Foundation, Inc.  
Matthew Bowes  
Melissa Sedda-Alesnik  
Mindy & Wayne Rollins\*\*  
Mosaic Global Sales, LLC  
MSC Foundation  
Robert Toale Funeral Home  
Sandra Robinson  
Service Club of Manatee County  
Sharon Hillstrom  
Sharon Yadvan  
Stephen Contarino  
Tammy Cox-Leavell  
Taylor Family Foundation, Inc.  
TDS Construction, Inc.  
Teri & Eric Folkens  
The Edward E. and Lillian H. Bishop Foundation  
The Mary E. Parker Foundation  
Toni & Paul Azinger  
Trinity Lutheran Church of Bradenton  
United Way Suncoast Manatee  
Zeko's Group, Inc.

**\$500-\$999**

Acorn Management Partners LLC  
Allison & Mark Ulrich  
Amanda Richards Salon, LLC\*\*  
Barbara Sato  
Bayshore Eye Care, P.A.  
Betsy & Chris Pennewill  
BOA Circle #103  
Bob & Denise Johnson  
Bob & Dottie Turner  
Bradley Marner  
Brenda May  
Brian & Bethany Carter  
Byron Shinn  
Caryn Rose  
Catherine Mackey  
Cheryl Duley  
Christine Sket  
Cliff and Suzy Walters Fund  
David & Kerri Meyer  
Duncan Real Estate\*\*  
Edward Stolarski  
Fawley Bryant Architects, Inc.  
Focus Wealth Strategies, LLC  
Harry Wright  
Insurance Planning and Design, LLC  
Jennifer & Stephen Lerulli  
Jennifer Meadows  
JLI Management, LLC  
Karen Holbrook  
Karen LaPensee  
Karen Place  
KBR Foundation, Inc.  
Key 2 Life Training  
Kim & Greg Dalglish  
Kim Boyd  
Kyle Burkett  
LaPensee Plumbing  
Laura & Steven Schafer  
Lee Crosby  
Lynne & Carl Callahan  
Manatee Community Foundation Executive Director's Fund  
Margaret Rost  
Mark Clark  
Mary Ann & Randy Allen\*\*





Melton Little  
Michele Greene\*\*  
Parvaneh & Robert Indelicato  
Patricia Hug  
Paula & Tom Ney  
Planned Parenthood of SW  
and Central FL  
Richard Pizzuto  
SAPS, LLC/US Service Animals  
Susan & Cliff Walters  
Susan Pierce  
Tanya Williams  
Teresa Rowe  
The Conrad and Ruth Ann  
Szymanski Fund  
Thomas Plowman  
THS Properties LLC  
Tim Fanning  
Unifed Way SunCoast (of  
Tampa Bay)  
Universal North America  
Insurance  
Urology Partners

**MARION**  
**\$10,000–\$24,999**  
Allen Muskantow  
City of Ocala  
Dorsay  
Kids Central, Inc.

**\$5,000–\$9,999**  
Infinite Love Ministries  
Louise Werner  
Mr. Wardell  
Palmer Foundation, Inc.  
Pamela Wardell  
Reilly Arts Center

**\$1,000–\$4,999**  
Alina and Brian Stoothoff  
Amy Pittman  
Anthony and Pamela  
Badolato  
Becky and James Schatt\*  
Billie & John Rawot\*  
Brad and Tammy King  
Civitan International  
Foundation  
Closetmaid, LLC  
Dr. and Mrs. Heinbockel  
Elizabeth Weldon  
Golden Ocala Golf &  
Equestrian Club  
Great American Insurance  
Co.  
Greta Dupuy  
Hometown Civitan Club  
Jean and John Bittl  
Jeffrey Kirk  
John Dozier  
Lisa and Robert Miller  
Marion County Sheriff's Office  
Marion Rotary Duck Derby  
Melissa Brackett, P.A.  
Merrill Lynch, Pierce, Fenner &  
Smith, Inc.  
Michelle and Charlie Stone  
Mr. and Ms. Scott D. Lanker  
National Christian Foundation  
Orlando  
Pittman Law Office, P.A.  
Publix Super Markets Charities,  
Inc.\*  
Regions Bank  
Suz and Art Geeraerts  
Tammy and Brad King

**\$500–\$999**  
Angie and Clint Lewis  
Barbara Woodson  
Bernadina Williams  
Beth Leaird  
Charles Schwab & Co., Inc.  
Clint and Angie Lewis  
Cox Communications  
Dawn Ford  
Devon Chestnut  
Fidelity Charitable  
Gef Schooled  
Greg Blair  
Jean and Mark Imes  
Jennifer and Brandon Bass  
Jennifer Teitelbaum and  
William Gladson  
Laura McLaughlin  
Manal Fakhoury  
Michael Graves  
Phil and Charlotte Rosenberg  
PowerCloud Development  
Group, LLC  
Raymond and Nancy  
Dunleavy  
Rosalind Nikknen  
Stanley and Linda Bausinger  
The Honorable Robert E. Landt  
and Mrs. Mary C. Landt  
The Muskantow Foundation  
Vicki Listebarger  
William Gladson and Jennifer  
Teitelbaum  
Williams Family Trust

**MIAMI**  
**\$100,000–\$149,999**  
Leslie L. Alexander Foundation,  
Inc.

**\$25,000–\$49,999**  
Hedly Foundation  
Peacock Foundation, Inc.  
The Batchelor Foundation, Inc.  
Wells Fargo Foundation

**\$10,000–\$24,999**  
4 Girls Foundation, Inc.  
Bank of America  
Brittany Perkins Castillo  
Commissioner Edmenson  
Verizon

**\$5,000–\$9,999**  
Give Miami Day  
Gregory Roll  
Publix Super Markets Charities,  
Inc.\*  
Robert & Stacey Crapsey  
Royal Caribbean Cruise LTD

**\$1,000–\$4,999**  
BankUnited  
Carola Mengolini  
Cindy & Irving Lerner  
Concacaf Inc.  
Cristina Grullon  
Danette Gossett\*  
Elsy Bello Gomez  
Horowitz Family Foundation,  
Inc.  
Isis Carbalaj de Garcia  
Jane & Phillip Moggio  
Jeanette Nunez  
Josephine Trippe  
Kadisha Phelps  
Kaufman Rossin & Co.  
Lester Langer

Lisa Graham  
Lucy Caicedo  
Maggie Barreto-Tercilla and  
Orlando Tercilla  
Margarita Morales  
Michelle Sutton  
Milke & Frances Tomas  
Nicole Mcaree-Blackburn  
Pamela Garrison  
Roberta Perez  
TD Bank  
The Story Room  
United Way of Miami-Dade  
Vanessa Hernandez  
Warren Whisenant

**\$500–\$999**  
Adria Almeida  
Amy Brown  
Carin Chapman  
Charlotte Leibowitz  
Claudia Reithauser  
Daniella Levine Cava  
Debbie Lang  
Joyce Landry  
Laurie Edgman  
Lawanda Wright-Robinson  
Mariella Gonzalez  
Mary Marx & Mike Fitch  
Matthew Rapoport  
Michelle Borg  
Phillip Logue  
Robert Crapsey  
Solly Heyman  
The Factor, Inc.  
Vivian Williams

**ORANGE**  
**\$100,000–\$149,999**  
Orlando Magic Youth  
Foundation

**\$50,000–\$99,999**  
Disney Worldwide Services,  
Inc.\*\*

**\$10,000–\$24,999**  
ADP Foundation, Inc.  
Anonymous  
Central Florida Foundation, Inc.  
Chelsey G. Magruder  
Foundation  
Dr. Phillips Center for the  
Performing Arts\*\*  
Jermaine Stokes  
Tupperware Brands  
Corporation\*\*

**\$5,000–\$9,999**  
ADP, LLC  
Adrianna Sekula  
Ariana Pierce\*\*  
Dan Newlin & Partners  
Florida Power & Light  
Company  
Share Our Strength's No Kid  
Hungry Campaign\*\*\*  
Stacia Pierce\*\*

**\$1,000–\$4,999**  
AAUW Orlando/Winter Park  
AdventHealth  
Alan Cahill  
Anne Landrum  
Brandi Fliegelman  
Central Florida Expressway  
Authority  
Christy Knox

Citrus Legal Funding  
Disney Golden Ears Club\*\*  
Electronic Arts  
Elise MacCarroll-Wright  
Ellen & Gary Parker  
Etzler Law, P.A.  
Gray-Robinson, Attorneys  
at Law  
Heart of Florida United Way,  
Inc.  
Hubbard Construction\*\*  
Insight Community  
Foundation, Inc.  
Insight Credit Union  
Jeresha White  
Jessica Locke  
Jim Reinert  
Karen Buchan  
Keller Williams Winter Park  
Luxury\*\*  
KITLIFE Planners  
Lavon Williams  
McDonald, Toole, Wiggins,  
P.A.  
Meranda Landes  
Mrs. Lavon Bracy Davis  
Nicole & Jason Decker  
Orange County Sheriff's  
Office  
Rachael & Chadwick Crews  
Rebekah Dorworth  
Sarah Geltz  
Susie Carlton  
Winter Park Construction\*\*  
Women on the Rise Orlando  
Chapter\*\*

**\$500–\$999**  
A. Duda & Sons, Inc.  
Aldis Stefansson  
Anissa King  
Ashley Nelson  
Brian Wong  
Carol Fisher  
Celebration Suites Hotel  
Champion Title and Closing  
Cherlette McCullough  
Kendrick Law Group  
LaSonia Landry  
Machelle Chavez  
Paramount Residential  
Mortgage Group  
Paul Jessen  
Personal Talent and Media  
Group  
Sasha Ellis  
Usha Singareddy

**PALM BEACH**  
**\$50,000–\$99,999**  
Blue Wave Marketing, Inc.  
UnitedHealthcare\*\*\*

**\$10,000–\$24,999**  
Children's Services Council of  
Palm Beach County  
Community Foundation  
for Palm Beach and Martin  
Counties  
Jewish Women's Foundation  
of the Greater Palm Beaches

**\$5,000–\$9,999**  
4 Girls Foundation, Inc.  
GenNx Foundation, Inc.  
Lloyd G. Trotter–GenNx360  
Capital Partners  
Publix Super Markets Charities,  
Inc.\*

**\$1,000–\$4,999**  
Anthony Graziano\*  
BNGF Perrella Fund  
Catherine Ali  
Comcast Cable  
Communication  
Elsy Bello Gomez  
Esther & Brian LaBovick  
Florida Education Foundation,  
Inc.  
FPL Home  
Heather Woolf\*  
John and Nellie Bastien  
Memorial Foundation  
Julie F. & Peter D. Cummings  
Fund  
Katherine Downey Berges,  
a donor-advised fund  
LaBovick Law Group\*\*  
Landon Fund  
Latasha Akoma  
Lisa Russo\*  
Michael E Wood Consultant,  
Inc.  
Palm Beach County Justice  
Association, Inc.  
Patrick Cullen  
Paula Davidson\*  
Scott Smith Injury Law  
The Poke Company  
Wells Fargo Bank, N.A.  
YourCause, LLC Trustee for  
NextEra Energy, Inc.

**\$500–\$999**  
Anthony Abitol  
Barbara Field  
Barbara Pariente  
Benefitability, LLC  
Chris Fetes  
Florida Power & Light  
Company  
Jennifer & Brian Creger Miller  
Julie Pettilo  
Junior League Boca Raton  
Lyn Michels  
Mary Leighton  
Network for Good  
PLACE Planning & Design  
Ruthmarie Clermont  
Searcy Denney Scarola  
Barnhart & Shipley, P.A.  
Sheila Girdini  
Shellie Lawson  
Sheryl Purcell  
Stamp Family Make a  
Difference Fund  
Susan Poncy  
Tarry Graziotto  
William Gogan, MD, P.A.

**PASCO**  
**\$100,000–\$149,999**  
Publix Super Markets Charities,  
Inc.\*

**\$25,000–\$49,999**  
DeBartolo Family Foundation,  
Inc.

**\$10,000–\$24,999**  
Community Foundation of  
Tampa Bay  
Live Nation Worldwide, Inc.  
Making Change  
Ms. Kay Dillinger\*

**\$5,000–\$9,999**  
Publix Super Markets Charities  
The Nurse Lawyer  
Wells Fargo Foundation

**\$1,000–\$4,999**  
Alice Everard Charitable  
Foundation  
AMS White Hub  
Junior Service League of  
Greater New Port Richey  
Lucas Magazine Foundation  
Mr. Ed Mitchell  
Mander Law Group  
Ms. Melanie Wetmore  
Parkway Dental, LLC  
Pasco County Sheriff's Office  
Republic Bank  
Rotary Club of New Port  
Richey Fund, Inc.  
Pasco County Sheriff's  
Charities  
Simpson Environmental  
Services  
Tara-Lyn Henningsen  
Trinity Rotary Charitable  
Foundation  
US Water

**\$500–\$999**  
Air Xpress DBA Benjamin Bros.  
Bauer, Crider, Kenny & Parry  
Attorneys At Law  
Catta Family Foundation, Inc.  
Edward Mitchell  
Jean Reuther  
Marguerite Kling  
Mr. David Key  
Mr. Jacques Hakim  
Myers & Fotopolous MD dba  
New Image Dermatology  
Pasco County Housing  
Authority  
St. George Greek Orthodox  
Church, Inc.  
Suncoast Clinical Research  
Sunrise Consulting Group  
Suncoast Recovery Centers of  
Florida Inc.  
Tampa Bay Golf & Country  
Club Tootsies  
Tanglewood Learning Center,  
LLC  
The Nurse Lawyer

**PINELLAS**  
**\$100,000–\$149,999**  
Juvenile Welfare Board of  
Pinellas County

**\$50,000–\$99,999**  
Francis & Gertrude Levett  
Foundation  
Schoen Family Charitable  
Fund

**\$25,000–\$49,999**  
DeBartolo Family Foundation,  
Inc.

**\$10,000–\$24,999**  
Beth Dillinger Foundation, Inc.\*  
Johns Hopkins All Children's  
Hospital  
Pinellas Community  
Foundation  
Pinellas County Board of  
County Commissioners  
Schoen Foundation  
The Paul & Marian Cones  
Charitable Fund

**\$5,000–\$9,999**  
DeBartolo Family Foundation,  
Inc.  
Debbie & Larry Lieberman

Foundation for a Healthy  
St. Petersburg  
Greta Dupuy  
Irene Sullivan\*  
Publix Super Markets Charities,  
Inc.\*  
Sally Zeh  
Wells Fargo Foundation

**\$1,000–\$4,999**  
Bill Isaly\*  
City of Pinellas Park  
Housh Ghovae  
JM Lexus  
Joan & David Walker  
Julie Weintraub  
Keiser University  
Kellie Gilmore  
Lightning Foundation, Inc.  
Linda Johnson and Steven Li  
Lockheed Martin  
Maria White  
Marion E. Long Revocable  
Trust  
N-41 Bingo  
Suncoast Better Government  
Committee  
Tanya Hollins  
Tech Data Corporation  
Teddy Thompson  
Teresa Rowe  
Wesley Chapel Toyota  
William & Marion Ballard  
Winters & Yonker, P.A.

**\$500–\$999**  
Annelise Driscoll  
Ava Lawrence  
Betty Sembler  
Claire Stiles  
Dermot O'Connor  
Dorothy Russ McGriff  
FSC Securities Corporation  
Gloria Flavin-Bauer  
Hands Across the Bay\*\*  
Kelly McAdams  
Linda Allan  
Lwen Tao  
Marla & Scott DeLarco  
Northside Engineering  
Services, Inc.  
Randy & Joyce Herman  
Sons of the American Legion  
St. Petersburg Post 14  
Tampa Bay Regional Planning  
Council  
The Benevity Community  
Impact Fund  
Thomas & Victoria Dunn  
Uma Desimine

**POLK**  
**\$100,000–\$149,999**  
George Jenkins Foundation

**\$50,000–\$99,999**  
Disney Worldwide Services,  
Inc.

**\$10,000–\$24,999**  
Best Buy Foundation  
Givewell Community  
Foundation  
Greta Dupuy

**\$5,000–\$9,999**  
Florida Education Foundation,  
Inc.  
Florida's Natural Growers  
Foundation

Glenn W. & Hazelle Paxson  
Morrison Foundation, Inc.  
Lakeland Area Chamber  
Foundation, Inc.  
Publix Super Markets Charities,  
Inc.\*  
Saddle Creek Logistics  
Services  
Share Our Strength's No Kid  
Hungry Campaign\*\*\*  
Tampa L. B. Sales, Inc.  
The Campisi Family  
Foundation, Inc.  
The Strings in Need, Inc. Fund  
Wells Fargo Foundation

**\$1,000–\$4,999**  
Anonymous  
Auto-Owners Insurance  
Bank of Central Florida  
Baron Realty, Inc.  
Bartow Ford Co.  
Beverly & Clayton Hollis  
Carden & Associates  
Carole and Lyle Philipson Fund  
Cheri & Paul Glogower  
Cheryl & Gregory Shell  
City of Lakeland Parks and  
Recreation  
David Lawrence  
Gasper & Karen Kovach  
Heath Funeral Chapel, Inc.  
James & Martha Dayvault  
Jeff Cox  
John & Lu Fitzwater\*\*  
Kathryn Abels  
Kristen Carlson For Congress  
Committee  
Lori Chaney  
Lyle & Carole Philipson  
Lynn Grady  
Martha Pellegrini  
MidFlorida Credit Union  
Raymond James Charitable  
Special Applications Group  
The Mark C. and Lynn D. Hollis  
Fund  
The Sanoba Law Firm  
Tracy & Steven Achinger  
Trista Otto\*  
Unifed Way of Central Florida

**\$500–\$999**  
Alice & Chuck Hunt  
Alice Koehler  
Brenda Cofer  
Brenda Pribila  
CenterState Bank  
Citizens Bank & Trust  
Ellen Katzman  
GFWC Junior Woman's Club  
of Lakeland  
Jack and Beverly Stephens  
Family Foundation  
Jacqueline Lyons  
Jason Heacock  
Jennifer Thornton  
Julie Roggeman  
Kim Brunson  
Lakeland Kiwanis Charitable  
Foundation  
Mary Tye  
Michael & Beverly Beckham  
Pre-Con Construction of  
Florida  
Richard & Maxine Weiss  
Rose Mock  
Sharon Miller  
Stevie Buck

**\$500–\$999**  
Bea M. Rais Merkle  
Community Fund  
Boys & Girls Club, SLC  
Caren Endriss  
Molly Maid of the Treasure  
Coast  
Ray & Elyn Stevenson Fund  
Sam's Club, #4972\*\*  
Two Way Radio Gear, Inc.  
Walmart #929  
Walmart, #4260

**VOLUSIA-FLAGLER**  
**\$25,000–\$49,999**  
Paul B. Hunter & Constance D.  
Hunter Charitable Foundation  
United Way of Volusia-Flagler  
Vandy Rioux  
Volusia Flagler Family YMCA

**\$5,000–\$9,999**  
Advent Health System (Florida  
Hospital)  
Ameriprise Financial

The Carol and Barney Barnett  
Fund  
Tony Colon  
Tracy & Zachary Duncan

**TREASURE COAST**  
**\$50,000–\$99,999**  
Children's Services Council,  
St. Lucie County

**\$25,000–\$49,999**  
Andrew & Robin Hunt  
Philanthropic Fund II

**\$10,000–\$24,999**  
Andrew Hunt  
Southeast Elevator  
Unifed Way of St. Lucie  
County  
W and H Thomas Charitable  
Trust

**\$5,000–\$9,999**  
Impact 100 St. Lucie 2020  
Fund  
Share Our Strength's No Kid  
Hungry Campaign\*\*\*

**\$1,000–\$4,999**  
Abernethy Family Fund  
Albert Russo  
Anna Westmore\*  
Bonner Mobile Bar  
Comcast Cable  
Communication  
Dawn Brown  
Denetta Johnson\*  
E.T. Gardner Foundation  
Elite Electric & Air, Inc.  
Georgette and Scott Beck  
Gerald and Lorraine  
Schaumburg  
Greta Dupuy  
Jimmy and Mary Frietas  
Keybank National Association  
Trust Division  
Lorraine and Gerald  
Schaumburg  
Mueller Family Fund  
Publix Supermarkets, Inc.  
Quentin Allen  
St. Lucie Battery and Tire  
The Webb Family Fund  
Will and Rachel Armstead\*

**\$500–\$999**  
Bea M. Rais Merkle  
Community Fund  
Boys & Girls Club, SLC  
Caren Endriss  
Molly Maid of the Treasure  
Coast  
Ray & Elyn Stevenson Fund  
Sam's Club, #4972\*\*  
Two Way Radio Gear, Inc.  
Walmart #929  
Walmart, #4260

**VOLUSIA-FLAGLER**  
**\$25,000–\$49,999**  
Paul B. Hunter & Constance D.  
Hunter Charitable Foundation  
United Way of Volusia-Flagler  
Vandy Rioux  
Volusia Flagler Family YMCA

**\$5,000–\$9,999**  
Advent Health System (Florida  
Hospital)  
Ameriprise Financial

Florida Blue Foundation  
Gordon and Lynn Bailey\*  
Publix Super Markets Charities,  
Inc.\*

**\$1,000–\$4,999**  
Ashley Bigg  
Audrey Butler  
Benevity Community Impact  
Fund  
Bob and Bobbi Coleman  
Brown & Brown, Inc.  
Checkered Flag Committee,  
Inc.  
Clay and Karen Ervin  
Erin Masters  
Florida Health Care Plans  
Florida Power & Light  
Company  
Galin Crist\*  
Georgia McCurdy  
Ghyabi Consulting &  
Management, LLC  
Gina Sevigny  
Grand Erie Fraternal Order of  
Eagles Auxiliary 3800  
Halifax Insurance Partners.  
A Division Of Foundation Risk  
Partners  
Jessica Scott  
Joyce Shanahan  
Karen and Clay Ervin  
Leek Educational Services,  
LLC  
Lucky's Market  
Mara Law, P.A.  
Michelle Leek  
Moore Family Living Trust Frank  
D. Moore, TTEE  
Omar Vargas  
Seacoast Bank  
The Benevity Community  
Impact Fund  
Tina Kirk  
VyStar Credit Union  
Weber Air & Heat  
Technologies, Inc.  
Wells Fargo Bank, N.A.

**\$500–\$999**  
Ann Marie Zweifel  
Bobbi and Bob Coleman  
City of Ormond Beach  
Community United Methodist  
Church  
Cunningham Oil Company  
Cynthia Marriott  
Deacon Design, Inc.  
First Presbyterian Church of  
Daytona Beach  
IBM Employee Services Center  
Janis Weber  
Jon Hall Chevrolet  
Kirstin Moore  
Lauren and Matthew Dye  
Lorin Love  
Maryam Ghyabi-White  
Matthew Welch  
Patty Lynn  
Rotary Club of Daytona  
Beach West\*  
Stephanie Ripley  
Teresa Hernandez  
Terry and Hershey McChesney  
Vickie Henson  
Women of St Mark by the Sea  
Lutheran Church



## OUR MISSION

Pace provides girls and young women an opportunity for a better future through education, counseling, training, and advocacy.

## VALUES AND GUIDING PRINCIPLES

**Honor the Female Spirit** We value and promote the female perspective by respecting its distinct needs, creating safe and gender-responsive environments, and celebrating the female experience.

**Focus on Strengths** We identify strengths in our girls, their families, our staff, and our supporters. Using these strengths as our foundation, we build strong, confident, and productive community participants.

**Act with Integrity and Positive Intent** We believe that all actions and decisions must be guided by the highest ethical principles, respecting the uniqueness of all involved and honoring each other's differences.

**Embrace Growth and Change** We believe that everyone is capable of remarkable growth, and only by encouraging change can individuals, organizations, and society reach their full potential.

**Value the Wisdom of Time** We understand that patience can be as powerful as immediate action, and each has its place. We value the discernment required for their effective use.

**Exhibit Courage** Courage is essential to making a difference. It enables us to speak for those who cannot, take risks to do what is right, deliver just and fair consequences, and be accountable for our actions.

**Seek Excellence** We strive for excellence in all we do by holding true to our mission, while consistently meeting high standards of performance, reflecting critically upon our accomplishments, seeking innovative solutions, and believing all things are possible.

**Create Partnerships** We believe in developing effective partnerships and long-term relationships by listening to our staff, our girls and their families, and our communities, incorporating each person's input and involving them in our decision-making process.

**Invest in the Future** We work to create an environment that fosters the long-term growth and development of our girls, staff, agency, and communities. We believe this is necessary to create results that have a lasting impact.



Find the Great in Every Girl.

[pacecenter.org/2020impact](http://pacecenter.org/2020impact)

